

LAWN, GARDEN & FARM EQUIPMENT BELTING



MXV™ Series
OEM
FHP Multi-Plus®



SCAN FOR
COMPLETE
BELT CROSS
REFERENCE

 **Jason
Industrial Inc.®**
A MEGADYNE GROUP CO.

LAWN, GARDEN & FARM EQUIPMENT BELTING

Jason Industrial[®] is a Megadyne Group company that manufactures and delivers a comprehensive inventory of rubber and polyurethane synchronous belts, rubber v-belts, industrial hose and couplings, plus hardware to the industrial community worldwide.

When extraordinary needs require specialized components, we will work with you from prototype to production, creating custom solutions that suit your unique application.

As a Jason customer, you can feel confident in the quality and integrity of our products, the speed and efficiency at which they are delivered, and the expertise and customer focus that our local representatives are committed to providing.

Jason's corporate headquarters are based in Fairfield, New Jersey. Our distribution center is located just outside of Chicago, Illinois, with additional corporate offices in Canada, Mexico, Brazil and Colombia, as well as manufacturing, warehousing and distribution centers in cities across the globe.

Welcome to Jason...the first name in mechanical rubber and urethane products that power industry forward.



TABLE OF CONTENTS

TYPE	BELT SERIES	PAGE	
LAWN & GARDEN	Belt Guide	2-3	
	MXV™ Lawn & Garden Premium Belts	4-5	
RUBBER V-BELTS	Fractional Horsepower (FHP)	3L	6
	UniMatch® Classical Multi-Plus®	A, B, C, D, E	7-9
	Centrifugal (PTO) Replacement Belts	ACE / HYPRO	9
	Double-V (Hexagonal) Classical	AA, BB, CC	10-11
	Accu-Link® V-belts		12
	Technical Data		13
	OEM Replacement Belts	AYP, Bobcat/Ransomes, Castel Garden, MTD, Murray, Simplicity, Snapper	14-15
	Drive Belt Nomenclature		51
	V-belt Accessories		52
	Terms, Conditions & Limited Warranty of Sale		53

CROSS-REFERENCE - Lawn & Garden Equipment Part Numbers 16-29

BELT SERIES	PAGE	BELT SERIES	PAGE
Aircap, Allis Chalmers/Deutz, Ariens/Gravely	16	Kees/Yazoo, Lawn Chief, Lawn-Boy, Massey, Maxim,	23
AYP	16-18	McColloch, McLane, Merry Tiller, Mighty Mac	
Billey Goat, Bobcat/Ransomes, Bolens	18	Montgomery Ward	23-24
Briggs & Stratton (Murray), Bunton	19	Moto-Mower, Mott	24
Craftsman	19-20	MTD	24-26
Cub Cadet, Dixon, Edco, Encore, Excel	20	NOMA/AMF/Dynamark, Poulan, Razor, Roof, Scag	26
Exmark	20-21	Simplicity	26-27
Ford, Gilson, Grasshopper, Gravely, Haban, Homelite,	21	Snapper	27
Homko, Honda		Toro/Wheel	27-28
Huskee/Husky	21-22	Troy-Bilt	28
Husqvarna, Jacobson	22	Western	28-29
John Deere	22-23	Yamaha, Yardman	29

CROSS-REFERENCE - AG Equipment Part Numbers 30-50

BELT SERIES	PAGE	BELT SERIES	PAGE
Ace Pump, AG Chemical	30	John Deere	41-43
Allis Chalmers/Gleemer	30-32	Johnson Farm, KBH, Kasten, Keith Industries, Kelley Mfg.	43
Alloway, Anthes West, Applequist, Arbos Italy, Arts Way,	32	Kelly Ryan	
Atlas Metal, Auburn Con, Auburn Industries Automatic,		Kent Mfg.	43-44
BMB Mfg., Badger Northland, Balzer, Barrantine, Bear Cat,		Kinze, Kitson Poultry, Koehring, Kosch, Krone, Kubota,	44
Blackwelders, Blair Man., Brady, Brandt, Brillion Iron, Brown,		Kuhn, Kuker, Laidig, Landpride, Lennox, Lewis, Lilliston,	
Bush Hog, Butler Mfg.		Lockwood Corp., Long Mfg., J.E. Love, Luedke, Lundel	
CCIL	32-33	Macdon	44-45
CFE, E.L. Caldwell, Calkins, Canadian Co-Op,	33	Maize	45
Cardinal, Carter		Massey Ferguson	45-46
Case - I H	33-35	Mayrath, McConnell Mfg., McKee, Melos Mfg., Melroe,	46
Caterpillar	35-36	MI-T-M, Mitsubishi, Mono Mfg., Moody Mfg., Mooers	
Central Texas Irrigation, Claas, Claey's, Clark	36	Machinery, Moridge Mfg.	
Equipment, Clay Equipment, Cleveland Farm, Colt Man.,		Mott Mfg., New Idea, Oppel Harvester, Owatonna Mfg.,	47
Coltec Industries		PK Mfg., Parma, Ben Pearson, Peerless, Pennington, Polaris,	
Continental Belton	36-37	Powell Mfg., Pug Mfg., Ramacher, Redbill, Renn, Rivinius	
Contree, Cross Equipment, Custom Farm, DK Mfg., Daffin,	37	Robin Nodwell, Rodgers Mfg., Root Mfg., Roskamp Mfg.,	48
Danuser, David Mfg., Desert Irrigation, Deweze, Distrivelez,		Rotech, Rowse Hydraulics Rakes, SE Spray Equipment,	
Dresser Industries, Dura Corp., Edwards Equipment, Elliot Mfg.,		S/G Mfg., Sakundiak, Schuler, Scoop-a-Second, Shaw,	
Enid Foundry, Eversman, Excel Industries, Farmhand, Farrar		Shellman, Shinn, Simplex Mfg., Sioux Tool, Smalley, Snow Corp.,	
Machine, Field Queen, Finn Corp., Fleming Mfg., Food Machine		South Bend Farm, Speed King, Speedy Mfg., Starline, Steiger	
Ford/New Holland	37-39	Tractor, Sund Mfg., Sunmaster, Superior Equipment, Thiokol,	
Formallo, Foster, Fox Brady (Koehring), Freeman & Sons	39	Thompson, Tote Co., Triple C, Tyler, United Farm Tool, Utah	
Frick, Friggstad Mfg., G.T. Sales & Mfg., Gehl Co., Gilmore		Agriculture, Van Dale, Vermeer, Versatile	
Tatge Mfg.		Vermeer, Vicon, Viking, Volvo/Penta, Walsh, Western	49
Glisson	39-40	Land Roller, Westfield, Western Pulverizer	
Goossen Ind., Graves, Green Isle, Grider, G.H. Grimm	40	White Farm Equipment	49-50
Grove Mfg., Habco, Hahn Inc., Hamacheck, Hammersmith,		Willmar, Wil-Rich, Woods & Copeland,	50
R.A. Hanson, Harnischfeger, Harris Harvester, Hart Carter,		Woods Division/Hesston, Wright Stander, Wyatt, Yanmar,	
Haybuster, HCC Corp., Heath, Henke Machine, Henry Ind.		Year-Around Cab	
Hesston	40-41		
Hevco, Hiniker, Hob Tool, Hobbs Engineering, Hutchinson	41		
Division, Hydra Mac, Imperial Steel, Industrial Albajar,			
Ingalls Mfg., Innes, Jacobs Tool, Jacobson Mfg., James Mfg.,			
Jebeco, Jet Flow, John Bean, John Blue			



BELT GUIDE

HOW TO USE THE JASON CROSS-REFERENCING BELT GUIDE *It's Quick & Easy!*

Can't Find Your V-Belt In This Book?
SCAN THIS CODE!



SEARCH BY

Keyword
Item #
Mfg. Belt Part #
Model #

EXAMPLE

Husqvarna
MXV4-960
532144959
LTH1342

- Simply look up the OEM manufacturer's part number on pages 14-27. For AG Equipment & Pumps, see pages 28-48. Listed next to it is a cross-reference to MXV™ or standard Multi-Plus® belts. Special OEM belts are listed on pages 12-13.
- What if the belt I am trying to replace has no part number on it (or I can't read it)? Using the Belt Construction Reference on pages 49, determine the cross-section, then measure the outside length of the belt.

For example, a belt that has 1/2" top width and measures 35" in circumference would be cross-referenced into either a A33(4L350) or a MXV4-350 (Mega-Power).

- Which do I use - MXV™ or Standard Multi-Plus® belts?

Most manufacturer's part numbers can be cross-referenced into either a standard Multi-Plus® belt or a Super Duty MXV™ belt. If given a choice, we recommend the MXV™ belt, especially for lawn and garden equipment. It is a little more expensive, but provides longer life and fewer breakdowns. An MXV™ belt may be substituted for a standard Multi-Plus® V-belt. The reverse, however, is not always true. A Multi-Plus® belt may not work on a drive designed for a stronger belt and definitely where clutching or idlers are used.

Some guidelines in deciding which type of belt to use:

HORSEPOWER - Whenever the motor horsepower is greater than 5 or the service life of a Multi-Plus® belt is less than desired, move up to the premium MXV™ Mega-Power belt.

CLUTCHING - If the belt must clutch (gradually engage the drive), use the MXV™ Mega-Power belt. It has a "dry" cover fabric specially designed to allow it to clutch. If clutching is not a requirement, the standard Multi-Plus® may be used.

BACKSIDE IDLER - While the Multi-Plus® belt will operate with a backside idler, MXV™ belt is designed for longer life when used on a drive where a backside idler is used.

All references to original equipment manufacturers, their trade names and their part numbers, listed in this catalog are used for identification purposes only. It is not our intention to imply that the merchandise is original equipment.

Any reference to Original Equipment Manufacturers, their trade names or stock numbers in this catalog is for identification purpose only.

The replacement recommendations contained in this catalog are not, in all cases, intended to be identical to the belt specifications of the original equipment manufacturer. Reasonable performance and availability are the major considerations in arriving at these selections. Where clutching drives are involved, extreme caution must be exercised to assure correct belt recommendations are used.

WARNING

Aramid Cable Cord — Since MXV™ belts feature high strength aramid tensile cords, shocks can be transmitted that exceed the strength of some cast pulleys. Carefully check the condition of your equipment, keep all guards in place, and consult the manufacturer if replacing standard belts with high strength aramid cord belts on cast pulleys.

BELT GUIDE



THE PROFESSIONAL SELECTION

ARAMID CORD - (MXV) Heavy Duty

Professional Aramid Cord, premium wrapped belts are designed for engine-powered applications and designed to handle the most demanding applications - from riding mowers to edgers and tillers. These belts have an extra long life, even when used in clutching and backside idler applications.

The Professional Aramid belts provide performance advantages over fractional horsepower belts:

- Aramid Cord provides a high tensile strength for severe shock load and stretch resistance. Aramid is pound for pound stronger than steel - it's the same material used in bullet proof vests!
- Lowered cord position within the MXV belt is a major performance advantage in backside idler applications.
- Our special clutching cover provides smooth engagement and prevents accidental engagement in clutching applications. This cover protects the belt from heat associated with clutching. It also allows smooth belt engagement and reduces the "grabbing" effect that can cause accidental belt engagement common with standard belts.



POLY CORD - (MULTI-PLUS®) Standard Duty

Professional Poly Cord belts are high quality standard duty replacement belt for use in less demanding applications, designed and constructed for motor powered applications. These belts are made from premium quality synthetic rubber compounds, and feature high-strength polyester cords.

These poly cord belts offer an economical alternative to the Aramid cord belts while still providing outstanding quality.



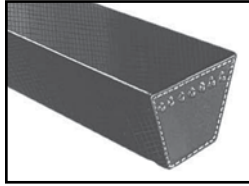
OEM Exact (XP) Replacement

The OEM Exact Replacement belts are of the highest quality, made to OEM specifications. These belts offer design length and top width dimensions to meet or exceed OEM tolerances. While most of our Aramid and Poly Cord belts are interchangeable with the exact replacement belts we offer, if we make an OEM exact belt available, we recommend selecting that belt. We carry exact replacements because of their non-standard size or because we have determined that they offer superior performance.





MXV™ LAWN & GARDEN PREMIUM BELTS



MXV™ Super Duty Lawn & Garden Belts - MXV3, MXV4, MXV5 (Tough Aramid Reinforcement)

These belts are ideal for lawn and garden applications. The special aramid tensile member guarantees excellent shock resistance while the bare back construction special cover assures smooth belt release and engagement in clutching applications. Special oil and heat resistant synthetic rubber.

Part number denotes nominal top width and Length. Designation Number is 1/2" nominal width and 30.0" approximate outside circumference - **Example: MXV4-300**

Features & Benefits

- **Aramid Blend Tensile Member** - Low stretch tensile; resistant to shock load
- **Special Fiber Loaded Undercord** - Greater tensile member support
- **Blue Bare Back Cover** - Smooth, quiet operation on clutching applications
- **Thin Profile** - Flexible on small pulleys for long life

Construction

Compound - Oil & heat resistant synthetic rubber

Cord - Aramid Blend Tensile Member

Cover - Bare Back (no rubber impregnation)

Applications - Lawn & Garden, Agriculture, Pumps, Blowers, Fans, Woodworking Equipment, Hand Tools, Sprayers, Compressors

Engineering Standards - Conforms to ARPM standard IP-23

Recommended Pulleys - Use pulleys made to ARPM standards



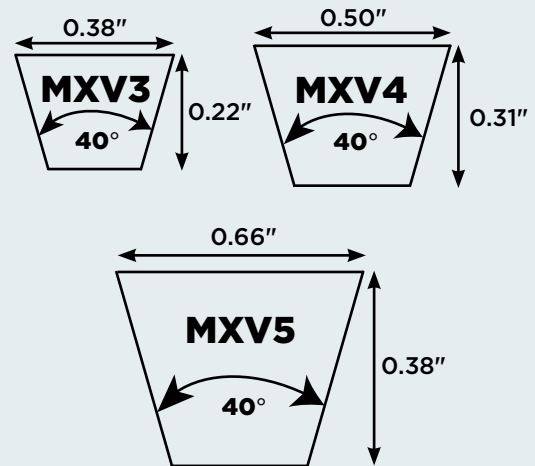
PART NUMBER DESIGNATION

MXV4-300

MXV = Heavy Duty construction

4 = 0.50" Nominal Top Width

300 = Outside length in tenths of an inch



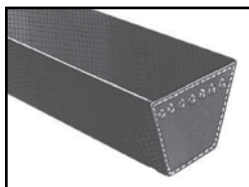
Note - MXV belts have the same dimensions and tolerances as standard FHP belts.

MXV3 LAWN & GARDEN BELT 0.38" TOP WIDTH x 0.22" THICK x 40° ANGLE

Belt Number	Outside Length (in.)	Approx. Weight (lbs.)	Belt Number	Outside Length (in.)	Approx. Weight (lbs.)	Belt Number	Outside Length (in.)	Approx. Weight (lbs.)	Belt Number	Outside Length (in.)	Approx. Weight (lbs.)
MXV3-200	20.0	0.08	MXV3-310	31.0	0.12	MXV3-420	42.0	0.17	MXV3-530	53.0	0.21
MXV3-210	21.0	0.08	MXV3-320	32.0	0.13	MXV3-430	43.0	0.17	MXV3-550	55.0	0.21
MXV3-220	22.0	0.09	MXV3-330	33.0	0.13	MXV3-440	44.0	0.18	MXV3-610	61.0	0.23
MXV3-230	23.0	0.09	MXV3-340	34.0	0.14	MXV3-450	45.0	0.18	MXV3-620	62.0	0.23
MXV3-240	24.0	0.10	MXV3-350	35.0	0.14	MXV3-460	46.0	0.18	MXV3-630	63.0	0.23
MXV3-250	25.0	0.10	MXV3-360	36.0	0.14	MXV3-470	47.0	0.19	MXV3-640	64.0	0.24
MXV3-260	26.0	0.10	MXV3-370	37.0	0.15	MXV3-480	48.0	0.19	MXV3-650	65.0	0.24
MXV3-270	27.0	0.11	MXV3-380	38.0	0.15	MXV3-490	49.0	0.19	MXV3-660	66.0	0.24
MXV3-280	28.0	0.11	MXV3-390	39.0	0.16	MXV3-500	50.0	0.20	MXV3-670	67.0	0.25
MXV3-290	29.0	0.12	MXV3-400	40.0	0.16	MXV3-510	51.0	0.20			
MXV3-300	30.0	0.12	MXV3-410	41.0	0.16	MXV3-520	52.0	0.20			



V-BELTS



Fractional Horsepower (FHP) V-Belts - 3L Section

Fractional Horsepower (FHP) V-Belts are ideal for HVAC equipment, appliances, outdoor power equipment, lawn & garden, and various industrial applications. Generally, 3L FHP belts are used individually on drives of 1 horsepower or less.

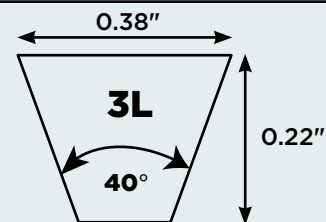
PART NUMBER DESIGNATION

3L130

3 = belt top width in increments of one-eighth inch = 3/8

L = Light Duty (FHP)

130 = outside length in tenths of an inch = 13



Features & Benefits

- **Oil & Heat Resistant** - Durability in tough environments
- **Flexibility** - Ideal for use with backside idlers
- **Static Dissipating** - Safe operation in potentially dangerous atmosphere

Construction

Compound - Natural rubber/SBR

Cord - Polyester

Cover - Cotton/polyester blend

Applications - HVAC Equipment, Lawn & Garden, Appliances, General Industry

Engineering Standards - Conforms to RMA standard IP 23

Recommended Pulleys - Use pulleys made to ARPM standards

Note - Effective length is approximately equal to outside length

3L SECTION 0.38" TOP WIDTH x 0.22" THICKNESS x 40° ANGLE

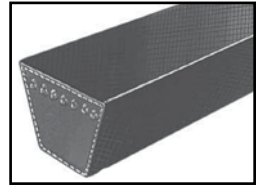
Belt Number	Outside Length (in.)	Approx. Weight (lbs.)	Belt Number	Outside Length (in.)	Approx. Weight (lbs.)	Belt Number	Outside Length (in.)	Approx. Weight (lbs.)	Belt Number	Outside Length (in.)	Approx. Weight (lbs.)
3L130	13.0	0.04	3L290	29.0	0.10	3L450	45.0	0.15	3L610	61.0	0.20
3L140	14.0	0.04	3L300	30.0	0.10	3L460	46.0	0.15	3L620	62.0	0.20
3L150	15.0	0.04	3L310	31.0	0.11	3L470	47.0	0.16	3L630	63.0	0.20
3L160	16.0	0.04	3L315	31.5	0.11	3L475	47.5	0.16	3L640	64.0	0.21
3L170	17.0	0.06	3L320	32.0	0.11	3L480	48.0	0.16	3L650	65.0	0.21
3L180	18.0	0.06	3L330	33.0	0.11	3L490	49.0	0.16	3L660	66.0	0.21
3L190	19.0	0.06	3L340	34.0	0.11	3L500	50.0	0.17	3L670	67.0	0.22
3L200	20.0	0.07	3L350	35.0	0.12	3L510	51.0	0.17	3L680	68.0	0.22
3L210	21.0	0.07	3L360	36.0	0.12	3L520	52.0	0.17	3L690	69.0	0.22
3L220	22.0	0.07	3L370	37.0	0.12	3L530	53.0	0.18	3L700	70.0	0.22
3L230	23.0	0.08	3L380	38.0	0.13	3L540	54.0	0.18	3L710	71.0	0.22
3L240	24.0	0.08	3L390	39.0	0.13	3L550	55.0	0.19	3L720	72.0	0.23
3L250	25.0	0.08	3L400	40.0	0.13	3L560	56.0	0.19	3L730	73.0	0.23
3L260	26.0	0.09	3L410	41.0	0.14	3L570	57.0	0.19	3L740	74.0	0.23
3L270	27.0	0.09	3L420	42.0	0.14	3L580	58.0	0.20	3L750	75.0	0.24
3L280	28.0	0.09	3L430	43.0	0.15	3L590	59.0	0.20	3L760	76.0	0.24
3L285	28.5	0.09	3L440	44.0	0.15	3L600	60.0	0.20			



V-BELTS



UniMatch® Classical Multi-Plus® - A, B, C, D, E



Jason/Megadyne's Multi-Plus® V-Belts are designed to perform in tandem in multiple V-Belt drives, maintaining drive efficiency and classical belt performance. Multi-Plus® V-Belts are always matched, easy to install and maintain. Jason Multi-Plus® V-Belts come in a complete range of sizes, are anti-static and offer oil and heat resistance meeting RMA requirements.

Dual Branding - A and B section belts up to 100" are Dual Branded clearly identifying both RMA classical and fractional horsepower (FHP) sizes allowing consolidation of your classical and FHP inventory into one belt line - saving you money! No need to carry two separate product lines. The dual part number system is more than just labeling, too. FHP & Classical belts have the same top width dimension but classical profile is deeper, allowing more belt/pulley contact and reducing sheave wear.

Dual Branding Example: A40 (4L420) B78 (5L810)

Features & Benefits

- **UniMatch® Construction** - Consistent performance in multiple V-Belt drives - ensures all belts will measure within ARPM matching standards
- **Dual Branding** - A & B sections dual-branded with classical and FHP part numbers - reduces inventory by allowing you to discontinue 4L and 5L
- **Oil & Heat Resistant** - Durability in tough environments

Construction

Compound - Natural rubber/SBR

Cord - Polyester

Cover - Cotton/polyester blend

Applications - General Industry, HVAC Equipment, Lawn & Garden, Agriculture

Engineering Standards - Conforms to ARPM standard IP 20

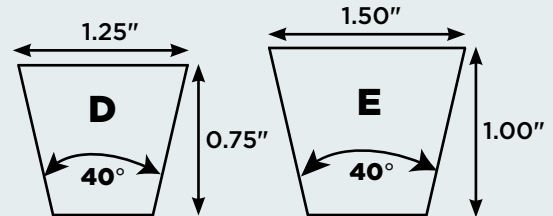
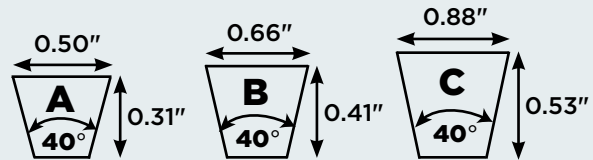
Recommended Pulleys - Use pulleys made to ARPM standards

PART NUMBER DESIGNATION

A15

A = 0.5" belt top width x 0.31" thickness

15 = Inside length in inches



"A" SECTION 0.5" TOP WIDTH x 0.31" THICKNESS x 40° ANGLE

- **Note** - For A Section, add 2 inches for outside length - Example: A15 + 2 inches = 17" approximate outside length

Belt Number	Outside Length (in.)	Approx. Weight (lbs.)	Belt Number	Outside Length (in.)	Approx. Weight (lbs.)	Belt Number	Outside Length (in.)	Approx. Weight (lbs.)	Belt Number	Outside Length (in.)	Approx. Weight (lbs.)
A14 (4L160)	16.0	0.10	A46 (4L480)	48.0	0.30	A78 (4L800)	80.0	0.40	A111	113.0	0.75
A15 (4L170)	17.0	0.10	A47 (4L490)	49.0	0.30	A79 (4L810)	81.0	0.40	A112	114.0	0.80
A16 (4L180)	18.0	0.10	A48 (4L500)	50.0	0.30	A80 (4L820)	82.0	0.40	A113	115.0	0.80
A17 (4L190)	19.0	0.10	A49 (4L510)	51.0	0.30	A81 (4L830)	83.0	0.40	A114	116.0	0.80
A18 (4L200)	20.0	0.10	A50 (4L520)	52.0	0.30	A82 (4L840)	84.0	0.40	A115	117.0	0.80
A19 (4L210)	21.0	0.10	A51 (4L530)	53.0	0.30	A83 (4L850)	85.0	0.40	A116	118.0	0.80
A20 (4L220)	22.0	0.10	A52 (4L540)	54.0	0.30	A84 (4L860)	86.0	0.40	A118	120.0	0.80
A21 (4L230)	23.0	0.10	A53 (4L550)	55.0	0.30	A85 (4L870)	87.0	0.40	A119	121.0	0.80
A22 (4L240)	24.0	0.15	A54 (4L560)	56.0	0.30	A86 (4L880)	88.0	0.40	A120	122.0	0.80
A23 (4L250)	25.0	0.20	A55 (4L570)	57.0	0.30	A87 (4L890)	89.0	0.40	A124	126.0	0.80
A24 (4L260)	26.0	0.20	A56 (4L580)	58.0	0.30	A88 (4L900)	90.0	0.40	A128	130.0	0.80
A25 (4L270)	27.0	0.20	A57 (4L590)	59.0	0.30	A89 (4L910)	91.0	0.40	A130	132.0	0.80
A26 (4L280)	28.0	0.20	A58 (4L600)	60.0	0.30	A90 (4L920)	92.0	0.40	A133	135.0	0.80
A27 (4L290)	29.0	0.20	A59 (4L610)	61.0	0.30	A91 (4L930)	93.0	0.50	A134	136.0	0.80
A28 (4L300)	30.0	0.20	A60 (4L620)	62.0	0.30	A92 (4L940)	94.0	0.50	A135	137.0	0.90
A29 (4L310)	31.0	0.20	A61 (4L630)	63.0	0.30	A93 (4L950)	95.0	0.50	A136	138.0	0.90
A30 (4L320)	32.0	0.20	A62 (4L640)	64.0	0.30	A94 (4L960)	96.0	0.50	A137	139.0	0.90
A31 (4L330)	33.0	0.20	A63 (4L650)	65.0	0.30	A95 (4L970)	97.0	0.50	A140	142.0	0.95
A32 (4L340)	34.0	0.20	A64 (4L660)	66.0	0.30	A96 (4L980)	98.0	0.50	A144	146.0	1.00
A33 (4L350)	35.0	0.20	A65 (4L670)	67.0	0.30	A97 (4L990)	99.0	0.50	A157	159.0	1.10
A34 (4L360)	36.0	0.20	A66 (4L680)	68.0	0.40	A98 (4L1000)	100.0	0.50	A158	160.0	1.10
A35 (4L370)	37.0	0.20	A67 (4L690)	69.0	0.40	A99	101.0	0.50	A162	164.0	1.10
A36 (4L380)	38.0	0.20	A68 (4L700)	70.0	0.40	A100	102.0	0.50	A173	175.0	1.15
A37 (4L390)	39.0	0.20	A69 (4L710)	71.0	0.40	A101	103.0	0.50	A180	182.0	1.15
A38 (4L400)	40.0	0.20	A70 (4L720)	72.0	0.40	A103	105.0	0.50	A196	198.0	1.31
A39 (4L410)	41.0	0.20	A71 (4L730)	73.0	0.40	A104	106.0	0.50	A197	199.0	1.31
A40 (4L420)	42.0	0.20	A72 (4L740)	74.0	0.40	A105	107.0	0.50	A210	212.0	1.35
A41 (4L430)	43.0	0.20	A73 (4L750)	75.0	0.40	A106	108.0	0.55	A221	223.0	1.40
A42 (4L440)	44.0	0.20	A74 (4L760)	76.0	0.40	A107	109.0	0.57	A256	258.0	1.70
A43 (4L450)	45.0	0.30	A75 (4L770)	77.0	0.40	A108	110.0	0.60	A258	260.0	1.75
A44 (4L460)	46.0	0.30	A76 (4L780)	78.0	0.40	A109	111.0	0.65			
A45 (4L470)	47.0	0.30	A77 (4L790)	79.0	0.40	A110	112.0	0.70			

"B," "C," "D" and "E" Multi-Plus® Sections listed on pages 8 & 9



V-BELTS

"B" SECTION 0.66" TOP WIDTH x 0.41" THICKNESS x 40° ANGLE

● Note - For B Section B210 and under, add 3 inches for outside length - Example: B20 + 3 inches = 23" approximate outside length

Belt Number	Outside Length (in.)	Approx. Weight (lbs.)	Belt Number	Outside Length (in.)	Approx. Weight (lbs.)	Belt Number	Outside Length (in.)	Approx. Weight (lbs.)	Belt Number	Outside Length (in.)	Approx. Weight (lbs.)
B20 (5L230)	23.0	0.40	B65 (5L680)	68.0	0.70	B110	113.0	1.10	B180	183.0	1.50
B21 (5L240)	24.0	0.40	B66 (5L690)	69.0	0.70	B111	114.0	1.10	B182	185.0	1.50
B22 (5L250)	25.0	0.40	B67 (5L700)	70.0	0.70	B112	115.0	1.10	B184	187.0	1.50
B23 (5L260)	26.0	0.40	B68 (5L710)	71.0	0.70	B113	116.0	1.15	B188	191.0	1.80
B24 (5L270)	27.0	0.40	B69 (5L720)	72.0	0.70	B114	117.0	1.20	B190	193.0	1.90
B25 (5L280)	28.0	0.40	B70 (5L730)	73.0	0.70	B115	118.0	1.20	B192	195.0	2.00
B26 (5L290)	29.0	0.40	B71 (5L740)	74.0	0.70	B116	119.0	1.20	B195	198.0	2.00
B27 (5L300)	30.0	0.40	B72 (5L750)	75.0	0.70	B118	121.0	1.20	B197	200.0	2.00
B28 (5L310)	31.0	0.40	B73 (5L760)	76.0	0.70	B120	123.0	1.20	B204	207.0	2.00
B29 (5L320)	32.0	0.40	B74 (5L770)	77.0	0.70	B122	125.0	1.20	B205	208.0	2.00
B30 (5L330)	33.0	0.40	B75 (5L780)	78.0	0.70	B123	126.0	1.20	B210	213.0	2.00
B31 (5L340)	34.0	0.40	B76 (5L790)	79.0	0.70	B124	127.0	1.20	B215	217.0	2.10
B32 (5L350)	35.0	0.40	B77 (5L800)	80.0	0.80	B125	128.0	1.20	B221	223.0	2.25
B33 (5L360)	36.0	0.40	B78 (5L810)	81.0	0.80	B126	129.0	1.20	B223	225.0	2.25
B34 (5L370)	37.0	0.40	B79 (5L820)	82.0	0.80	B127	130.0	1.20	B224	226.0	2.30
B35 (5L380)	38.0	0.40	B80 (5L830)	83.0	0.80	B128	131.0	1.30	B225	227.0	2.30
B36 (5L390)	39.0	0.40	B81 (5L840)	84.0	0.80	B130	133.0	1.30	B228	230.0	2.30
B37 (5L400)	40.0	0.40	B82 (5L850)	85.0	0.80	B131	134.0	1.30	B229	231.0	2.30
B38 (5L410)	41.0	0.40	B83 (5L860)	86.0	0.80	B132	135.0	1.30	B234	236.0	2.30
B39 (5L420)	42.0	0.40	B84 (5L870)	87.0	0.80	B133	136.0	1.30	B237	239.0	2.30
B40 (5L430)	43.0	0.40	B85 (5L880)	88.0	0.80	B134	137.0	1.30	B240	242.0	2.30
B41 (5L440)	44.0	0.40	B86 (5L890)	89.0	0.80	B135	138.0	1.30	B248	250.0	2.30
B42 (5L450)	45.0	0.40	B87 (5L900)	90.0	0.80	B136	139.0	1.30	B253	255.0	2.30
B43 (5L460)	46.0	0.40	B88 (5L910)	91.0	0.80	B138	141.0	1.30	B255	257.0	2.30
B44 (5L470)	47.0	0.40	B89 (5L920)	92.0	0.80	B140	143.0	1.30	B259	261.0	2.30
B45 (5L480)	48.0	0.40	B90 (5L930)	93.0	0.90	B141	144.0	1.30	B265	267.0	2.30
B46 (5L490)	49.0	0.50	B91 (5L940)	94.0	0.90	B142	145.0	1.30	B270	272.0	2.30
B47 (5L500)	50.0	0.50	B92 (5L950)	95.0	0.90	B144	147.0	1.40	B276	278.0	2.70
B48 (5L510)	51.0	0.50	B93 (5L960)	96.0	0.90	B147	150.0	1.40	B285	287.0	2.70
B49 (5L520)	52.0	0.50	B94 (5L970)	97.0	0.90	B148	151.0	1.40	B292	294.0	2.70
B50 (5L530)	53.0	0.50	B95 (5L980)	98.0	0.90	B150	153.0	1.50	B293	295.0	2.70
B51 (5L540)	54.0	0.50	B96 (5L990)	99.0	0.90	B152	155.0	1.50	B300	302.0	2.70
B52 (5L550)	55.0	0.50	B97 (5L1000)	100.0	0.90	B153	156.0	1.50	B315	317.0	2.90
B53 (5L560)	56.0	0.50	B98 (5L1010)	101.0	0.90	B154	157.0	1.50	B330	332.0	2.90
B54 (5L570)	57.0	0.50	B99 (5L1020)	102.0	1.00	B156	159.0	1.50	B333	335.0	2.90
B55 (5L580)	58.0	0.60	B100	103.0	1.00	B157	160.0	1.50	B345	347.0	3.00
B56 (5L590)	59.0	0.60	B101	104.0	1.00	B158	161.0	1.50	B360	362.0	3.20
B57 (5L600)	60.0	0.60	B102	105.0	1.00	B162	165.0	1.50	B394	396.0	4.00
B58 (5L610)	61.0	0.60	B103	106.0	1.00	B163	166.0	1.50	B433	435.0	4.20
B59 (5L620)	62.0	0.60	B104	107.0	1.00	B165	168.0	1.50	B472	474.0	4.60
B60 (5L630)	63.0	0.60	B105	108.0	1.00	B168	171.0	1.50			
B61 (5L640)	64.0	0.70	B106	109.0	1.00	B170	173.0	1.50			
B62 (5L650)	65.0	0.70	B107	110.0	1.00	B173	176.0	1.50			
B63 (5L660)	66.0	0.70	B108	111.0	1.00	B175	178.0	1.50			
B64 (5L670)	67.0	0.70	B109	112.0	1.00	B177	180.0	1.50			

"C" SECTION 0.88" TOP WIDTH x 0.53" THICKNESS x 40° ANGLE

● Note - For C Section C210 and under, add 4 inches for outside length - Example: C41 + 4 inches = 45" approximate outside length

Belt Number	Outside Length (in.)	Approx. Weight (lbs.)	Belt Number	Outside Length (in.)	Approx. Weight (lbs.)	Belt Number	Outside Length (in.)	Approx. Weight (lbs.)	Belt Number	Outside Length (in.)	Approx. Weight (lbs.)
C41	45.0	0.80	C81	85.0	1.30	C130	134.0	2.40	C200	204.0	3.50
C43	47.0	0.80	C83	87.0	1.30	C132	136.0	2.40	C202	206.0	3.60
C45	49.0	0.80	C85	89.0	1.40	C134	138.0	2.40	C204	208.0	3.60
C46	50.0	0.80	C86	90.0	1.40	C136	140.0	2.40	C207	211.0	3.65
C47	51.0	0.80	C87	91.0	1.40	C138	142.0	2.40	C208	212.0	3.65
C48	52.0	0.80	C88	92.0	1.40	C140	144.0	2.40	C210	214.0	3.70
C50	54.0	0.90	C90	94.0	1.40	C141	145.0	2.40	C220	223.0	3.70
C51	55.0	0.90	C92	96.0	1.40	C142	146.0	2.40	C225	228.0	4.40
C52	56.0	0.90	C93	97.0	1.40	C143	147.0	2.40	C228	231.0	4.40
C53	57.0	0.90	C94	98.0	1.50	C144	148.0	2.40	C238	241.0	4.80
C54	58.0	0.90	C96	100.0	1.50	C148	152.0	2.60	C240	243.0	4.80
C55	59.0	1.00	C97	101.0	1.80	C150	154.0	2.60	C245	248.0	5.00
C56	60.0	1.02	C98	102.0	1.80	C152	156.0	2.60	C246	249.0	5.00
C57	61.0	1.04	C99	103.0	1.80	C153	157.0	2.60	C248	251.0	5.00
C58	62.0	1.06	C100	104.0	1.90	C154	158.0	2.70	C255	258.0	5.00
C59	63.0	1.08	C101	105.0	1.90	C155	159.0	2.70	C270	273.0	5.40
C60	64.0	1.10	C102	106.0	1.90	C156	160.0	2.70	C276	279.0	5.40
C62	66.0	1.10	C103	107.0	1.90	C158	162.0	2.70	C280	283.0	5.50
C63	67.0	1.10	C104	108.0	1.90	C159	163.0	2.70	C285	288.0	5.60
C64	68.0	1.10	C105	109.0	1.90	C160	164.0	2.70	C297	300.0	5.60
C65	69.0	1.10	C106	110.0	1.90	C162	166.0	2.70	C300	303.0	5.60
C66	70.0	1.10	C108	112.0	1.90	C166	170.0	2.70	C303	306.0	5.60
C67	71.0	1.10	C109	113.0	1.90	C168	172.0	2.70	C314	317.0	5.60
C68	72.0	1.10	C110	114.0	1.90	C172	176.0	3.00	C315	318.0	5.60
C69	73.0	1.15	C112	116.0	2.00	C173	177.0	3.00	C330	333.0	5.70
C70	74.0	1.20	C115	119.0	2.00	C175	179.0	3.00	C345	348.0	6.60
C72	76.0	1.20	C116	120.0	2.00	C177	181.0	3.10	C360	363.0	7.00
C73	77.0	1.20	C118	122.0	2.00	C180	184.0	3.20	C390	393.0	7.40
C75	79.0	1.20	C120	124.0	2.10	C185	189.0	3.20	C420	423.0	7.80
C78	82.0	1.20	C124	128.0	2.20	C188	192.0	3.20	C480	483.0	7.90
C79	83.0	1.20	C126	130.0	2.25	C190	194.0	3.20			
C80	84.0	1.20	C128	132.0	2.30	C195	199.0	3.40			

V-BELTS



"D" SECTION 1.25" TOP WIDTH x 0.75" THICKNESS x 40° ANGLE

• **Note** - For D Section D210 and under, add 5 inches for outside length - **Example: D90 + 5 inches = 95" approximate outside length**

Belt Number	Outside Length (in.)	Approx. Weight (lbs.)	Belt Number	Outside Length (in.)	Approx. Weight (lbs.)	Belt Number	Outside Length (in.)	Approx. Weight (lbs.)	Belt Number	Outside Length (in.)	Approx. Weight (lbs.)
D90	95.0	3.40	D171	176.0	6.40	D270	273.0	10.00	D420	423.0	15.80
D105	110.0	4.00	D173	178.0	6.50	D285	288.0	10.70	D441	444.0	16.50
D115	120.0	4.30	D180	185.0	6.80	D300	303.0	11.20	D450	453.0	16.95
D120	125.0	4.50	D195	200.0	7.30	D315	318.0	11.80	D480	483.0	18.10
D128	133.0	4.80	D205	210.0	7.90	D330	333.0	12.40	D540	543.0	20.20
D132	137.0	5.00	D210	215.0	8.40	D345	348.0	12.60	D600	603.0	22.40
D136	141.0	5.20	D225	228.0	8.40	D355	358.0	13.00	D660	663.0	24.80
D144	149.0	5.40	D240	243.0	9.00	D360	363.0	13.50			
D158	163.0	6.00	D248	251.0	9.00	D390	393.0	14.60			
D162	167.0	6.10	D255	258.0	9.50	D394	397.0	14.80			

"E" SECTION 1.5" TOP WIDTH x 1" THICKNESS x 40° ANGLE

• **Note** - For E Section, add 6 inches for outside length - **Example: E144 + 6 inches = 150" approximate outside length**

Belt Number	Outside Length (in.)	Approx. Weight (lbs.)	Belt Number	Outside Length (in.)	Approx. Weight (lbs.)	Belt Number	Outside Length (in.)	Approx. Weight (lbs.)	Belt Number	Outside Length (in.)	Approx. Weight (lbs.)
E144	150.0	9.30	E225	231.0	13.00	E310	316.0	17.60	E420	426.0	23.80
E180	186.0	9.30	E240	246.0	13.50	E330	336.0	18.80	E441	447.0	25.00
E195	201.0	10.00	E270	276.0	15.30	E360	366.0	20.40	E460	466.0	26.00
E210	216.0	12.00	E300	306.0	17.00	E390	396.0	22.10	E480	486.0	28.00

CENTRIFUGAL (PTO) REPLACEMENT BELTS

**for: Ace Centrifugal Pump – Model PTOC/H600-10, 1000-10, 600-10B
Model CPK Centrifugal Sprayer Pump**

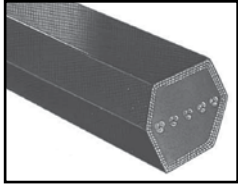
Belt Number	Description	Fits Model Number
BAC-28-8	Poly-V belt, 8 Groove	PTOC-540, 600, 600B, 600D
AC-28-8M	Poly-V belt, 8 Groove	PTOC-1000, 1000B
BAC-28-10	Poly-V belt, 10 Groove	PTOC-600-10, 600-10B
BAC-28-10M	Poly-V belt, 10 Groove	PTOC-1000-10, 1000-10B
BAC-28-10-150	Poly-V belt, 10 Groove	PTOC RPM, 1000 RPM
BAC-28-10M-150	Poly-V belt, 10 Groove	PTOC PPMB, 1000 RPMB
CPK-28-2	Polyflex, set 2 ea.	CPK Sprayer Pump, 3450 RPM
FMK-28-2M	Neoflex, set 2ea.	1000 RPM, Front PT

**for: Hypro (belt drive) Centrifugal Pump – Model 9401C (600RPM PTO)
Model 9401C-1000 (1000 RPM PTO)**

Belt Number	Description	Fits Model Number
540J12	Poly-V belt, 12 Groove	9403-540S
3100-0005	Poly-V belt, 12 Groove	540 RPM
3100-0006	Poly-V belt, 12 Groove	1000 RPM
3103-0004	Polyflex, set 2 ea.	9200-540 RPM
3103-0005	Polyflex, set 2 ea.	9200-1000 RPM
3103-0009 (ST876)	Timing Belt, 345L100	9401-6000 RPM
3103-0010 (ST686)	Timing Belt, 270L100	9401-1000 RPM



V-BELTS



Double-V (Hexagonal) Classical Belts - AA, BB, CC Cross Sections

Specially designed for serpentine and reversing drives, Double V-belts transmit power from both sides of the belt. Polyester cords and cotton/polyester cover provide maximum strength and length stability with minimum stretch. These belts conform to ARPM Engineering Standard IP-21. Double V-belts are available in three standard ARPM sections - AA, BB and CC - and in lengths up to 540 inches. They are specified by belt section letters and a Standard Length Designation that is equivalent to the length of single "V" profile belts - **Example: AA49**

CC Section - Dry can belts available on request. These are used in drying can applications in the textile industry.

Features & Benefits

- **Polyester Tensile Member** - Maximum strength, minimum stretch
- **Dual Cross-Section Construction** - Flexibility in design; delivers power from both sides of the belt
- **Center Cordline Construction** - Increased flexibility on reverse bend or serpentine drives; longer life than standard belts

Construction

Compound - NR/SBR

Cord - Polyester

Cover - Cotton/polyester blend

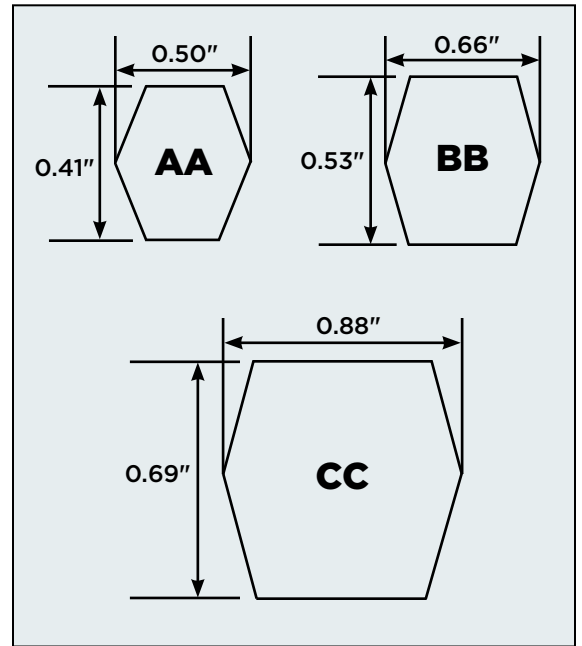
Applications - General Industry, Lawn & Garden, Agriculture, Textile, Material Sorting Equipment

Note - These belts do not use the same nomenclature as Agricultural belts. Refer to Jason/Megadyne Engineering for length conversions

Engineering Standards - Conforms to ARPM standard IP-21

Recommended Pulleys - Use pulleys made to ARPM IP-20 for the respective single V-belt

NOMINAL CENTER WIDTH



V-BELTS



"AA" SECTION 0.5" WIDE, 0.41" THICK

Belt Number	Inside Length (in.)	Approx. Weight (lbs.)	Belt Number	Inside Length (in.)	Approx. Weight (lbs.)	Belt Number	Inside Length (in.)	Approx. Weight (lbs.)	Belt Number	Inside Length (in.)	Approx. Weight (lbs.)
AA49	49.9	0.50	AA75	75.9	0.60	AA96	96.9	1.00	AA130	130.9	1.30
AA51	51.9	0.50	AA78	78.9	0.75	AA98	98.9	1.00	AA145	145.9	1.40
AA55	55.9	0.50	AA80	80.9	0.80	AA100	100.9	1.00	AA148	148.9	1.50
AA58	58.9	0.50	AA83	83.9	0.80	AA105	105.9	1.00	AA155	155.9	1.50
AA60	60.9	0.50	AA85	85.9	0.80	AA108	109.9	1.10	AA194	194.9	1.80
AA63	63.9	0.60	AA88	88.9	0.80	AA112	112.9	1.20	AA240	240.9	2.40
AA68	68.9	0.60	AA90	90.9	0.80	AA120	120.9	1.20			
AA73	73.9	0.60	AA93	93.9	1.00	AA128	128.9	1.30			

"BB" SECTION 0.66" WIDE, 0.53" THICK

Belt Number	Inside Length (in.)	Approx. Weight (lbs.)	Belt Number	Inside Length (in.)	Approx. Weight (lbs.)	Belt Number	Inside Length (in.)	Approx. Weight (lbs.)	Belt Number	Inside Length (in.)	Approx. Weight (lbs.)
BB43	44.3	0.60	BB87	88.3	1.10	BB118	119.3	1.50	BB175	176.3	2.10
BB45	46.3	0.64	BB90	91.3	1.10	BB120	121.3	1.50	BB180	181.3	2.20
BB50	51.3	0.70	BB92	93.3	1.20	BB124	125.3	1.50	BB182	183.3	2.30
BB51	52.3	0.70	BB93	94.3	1.20	BB127	128.3	1.55	BB185	186.3	2.30
BB52	53.3	0.75	BB94	95.3	1.20	BB128	129.3	1.60	BB187	188.3	2.40
BB54	55.3	0.85	BB95	96.3	1.20	BB129	130.3	1.70	BB190	191.3	2.40
BB55	56.3	0.90	BB96	97.3	1.20	BB130	131.3	1.70	BB195	196.3	2.40
BB60	61.3	1.00	BB97	98.3	1.20	BB133	134.3	1.75	BB210	211.3	2.60
BB62	63.3	1.00	BB100	101.3	1.25	BB136	137.3	1.80	BB214	215.3	2.65
BB68	69.3	1.00	BB102	103.3	1.30	BB140	141.3	1.80	BB215	216.3	2.66
BB70	71.3	1.00	BB103	104.3	1.30	BB144	145.3	1.80	BB225	226.3	2.80
BB71	72.3	1.00	BB104	105.3	1.30	BB148	149.3	1.90	BB228	229.3	2.90
BB72	73.3	1.00	BB105	106.3	1.30	BB155	156.3	2.00	BB234	235.3	2.90
BB73	74.3	1.00	BB107	108.3	1.30	BB158	159.3	2.00	BB240	241.3	2.90
BB74	75.3	1.00	BB108	109.3	1.30	BB161	162.3	2.00	BB255	256.3	3.10
BB75	76.3	1.00	BB111	112.3	1.30	BB162	163.3	2.10	BB270	271.3	3.30
BB76	77.3	1.00	BB112	113.3	1.40	BB168	169.3	2.10	BB278	279.3	3.70
BB77	78.3	1.00	BB114	115.3	1.40	BB170	171.3	2.10	BB300	301.3	3.70
BB81	82.3	1.10	BB115	116.3	1.45	BB172	173.3	2.10	BB360	361.3	4.60
BB85	86.3	1.10	BB116	117.3	1.50	BB173	174.3	2.10			

"CC" SECTION 0.88" WIDE, 0.69" THICK

Belt Number	Inside Length (in.)	Approx. Weight (lbs.)	Belt Number	Inside Length (in.)	Approx. Weight (lbs.)	Belt Number	Inside Length (in.)	Approx. Weight (lbs.)	Belt Number	Inside Length (in.)	Approx. Weight (lbs.)
CC75	77.1	1.70	CC119	121.1	2.60	CC173	175.1	3.80	CC240	242.1	5.20
CC81	83.1	1.80	CC120	122.1	2.70	CC174	176.1	3.80	CC270	272.1	5.90
CC85	87.1	1.90	CC128	130.1	2.90	CC178	180.1	4.00	CC300	302.1	6.50
CC90	92.1	2.00	CC140	142.1	3.10	CC180	182.1	4.00	CC330	332.1	7.20
CC96	98.1	2.20	CC144	146.1	3.20	CC195	197.1	4.60	CC360	362.1	7.80
CC105	107.1	2.40	CC154	156.1	3.40	CC210	212.1	4.70	CC390	392.1	8.50
CC112	114.1	2.50	CC158	160.1	3.50	CC225	227.1	4.90	CC420	422.1	9.10
CC118	120.1	2.60	CC162	164.1	3.80	CC234	236.1	5.10	CC780	782.1	14.90

DOUBLE-V CLASSICAL BELTS FOR POULTRY INDUSTRY



Note: "N" suffix on belt number denotes double-notch construction. Contact Jason for availability of additional sizes.

Used on equipment in the poultry industry for the de-feathering process, the table below lists popular sizes of Jason Double-V Classical Belts which have proven themselves in this harsh environment. Where a suffix of N is seen at the end of the belt number (**Example: BB158N**), belts are double-notched for extra flexibility.

Belt Number	Inside Length (in.)	Approx. Weight (lbs.)	Construction
AA128	128.9	1.30	Standard
AA148	148.9	1.50	Standard
BB155	156.3	2.00	Standard
BB155N	156.3	2.00	Double Notched
BB158	159.3	2.00	Standard
BB158N	159.3	2.00	Double Notched
BB172N	173.3	2.10	Double Notched
BB185	186.3	2.30	Standard





ACCU-LINK® V-BELTS

Accu-Link® Detachable Link Type V-Belt - The Ideal Replacement Belt for Conventional Rubber V-Belts!

Accu-Link® detachable tab type link belting is the ideal substitute for conventional rubber V-belts. Make endless with a simple twist - no tools required! Polyester fabric is impregnated with a premium polyurethane compound that eliminates elongation and improves tensile strength for longer life.

Jason/Megadyne's exclusive manufacturing process makes Accu-Link® the most precise belt of its type, for optimum sidewall fit with the pulley.

Accu-Link® is available in 25 ft. and 100 ft. cartons.

3L and A-Link also available in 5 ft. sleeved length. B-Link also available in 6 ft. sleeved length.

Features & Benefits

- **Durable Urethane Coating** - Increased life and durability
- **Rugged Polyester Fabric** - Strength and longer life; maximum horsepower
- **Can Be Assembled In Any Length** - Readily available in emergencies - reduces inventory
- **Easy Assembly - No Tools Needed** - Assemble by hand, a fast and reliable solution, minimizes downtime
- **Chemical and High Temperature Resistance** - Dependability in harsh environments
- **Segmented Link Construction** - Rolls onto drive pulleys like chain - no cords to break
Reduced vibration over conventional V-belts
- **Versatility** - Can be used in any industry, hundreds of applications
Can be used as singles or multiple V-belts
- **Horsepower Capacity** - Power ratings equal to conventional V-belts
- **Interchangeability** - Can be installed on existing pulleys with no changes in set-up

Where to Use Accu-Link®

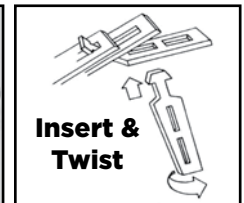
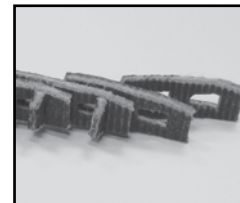
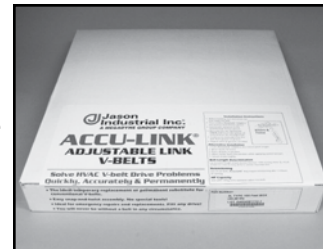
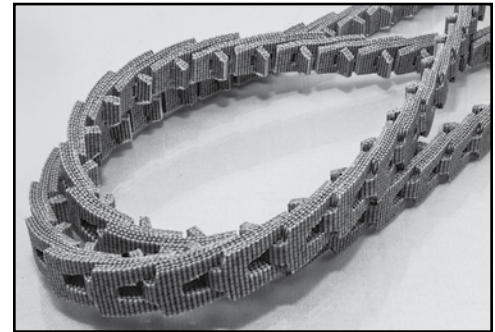
- Temporary or permanent substitution for conventional rubber V-belts
- Any V-belt application where it is difficult to install an endless belt - avoid costly labor-intensive machine teardowns
- V-belt applications where chemical resistance and high temperature resistance is needed
- Mobile Service Vehicles where carrying a large inventory of belts is not practical

Applications - Poultry, HVAC, General Industry, Lawn & Garden, Agriculture

Engineering Standards - None - No engineering standard exists for link-type belting

Recommended Pulleys - Use pulleys made to ARPM standards

Availability - 3L, A, B, C, CC sections

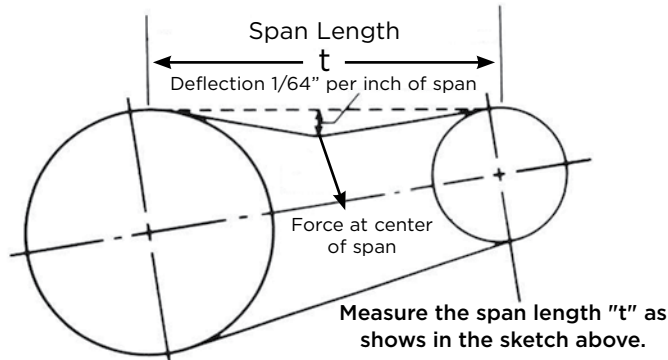


BELT TYPE/SECTION	PART NUMBER	LENGTH (FEET)	WEIGHT PER FOOT (LBS.)	PACKAGING
3L	3L-LINK-5	5	0.5	5 ft. in one sleeve
	3L-LINK-25	25	0.5	25 ft. in one carton
	3L-LINK-100	100	0.5	100 ft. in one carton
A	A-LINK-5	5	0.6	5 ft. in one sleeve
	A-LINK-25	25	0.6	25 ft. in one carton
	A-LINK-100	100	0.6	100 ft. in one carton
B	B-LINK-6	6	0.9	6 ft. in one sleeve
	B-LINK-25	25	0.9	25 ft. in one carton
	B-LINK-100	100	0.9	100 ft. in one carton
C	C-LINK-25	25	.17	25 ft. in one carton

V-belt Tensioning Instructions

V-belt tensioning adjustment can be made using a tension gauge or other type spring scale, using the following procedure. After seating the belts in the groove and adjusting center distance so as to take up slack in the belts, further increase the tension until only a slight bow on the slack side is apparent while the drive is operating under load. Stop the drive and, using the gauge, measure the force necessary to depress one of the center belts 1/64-inch for every inch of belt span (see sketch below).

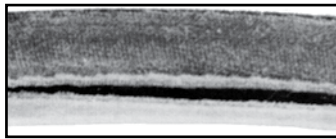
For example, a deflection for a 50-inch belt span is 50/64ths, or 25/32-inch. The amount of force required to deflect the belt should compare with the deflection forces noted in the chart below. Also notice for V-belts the deflection forces vary from the initial "run-in" values, which are greater (reflecting higher run-in tensioning) to the "normal" values for after the run-in period.



Standard V-Belt Tensioning Deflection Force Table

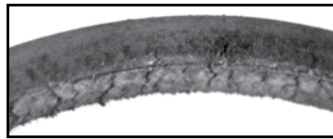
Belt Cross Section	Smaller Pulley Diameter Range (in.)	Deflection Force		Weight kg/m
		Run-In (lbs.)	Normal (lbs.)	
A	3.0-3.6	3-3/8	2-1/4	A = 0.13
	3.8-4.8	4-1/4	2-7/8	
	5.0-7.0	5-1/8	3-3/8	
AX	3.0-3.6	4-1/8	2-3/4	AX = 0.12
	3.8-4.8	5	3-1/4	
	5.0-7.0	6	4	
B	3.4-4.2	4	2-5/8	B = 0.19 RB = 0.27/RIB
	4.4-5.2	6	4	
	5.4-9.4	7-1/8	5-1/4	
BX	3.4-4.2	5-1/4	3-1/2	BX = 0.19
	4.4-5.2	7-1/8	4-3/4	
	5.4-9.4	9	6	
C	7.0-9.0	11-1/4	7-1/2	C = 0.33 RC = 0.42/RIB
	9.5-16.0	15-3/4	10-1/2	
CX	7.0-9.0	13-1/2	9	CX = 0.31
	9.5-16.0	17-1/2	11-3/4	
D	12.0-16.0	24-1/2	16-1/2	D = 0.64
	18.0-22.0	33	22	
E	21.6-27.0	48	32	E = 0.98
3V	3.40-4.20	6	4	3V = 0.08 R3V = 0.12/RIB
	4.20-10.6	7	5	
3VX	2.20-3.65	7	5	3VX = 0.07 R3VX = 0.09/RIB
	4.12-10.6	8	6	
5V	7.10-10.9	16	8-12	5V = 0.20 R5V = 0.30/RIB
	11.8-16.0	20	10-15	
5VX	4.40-10.9	18	10-14	5VX = 0.18 R5VX = 0.23/RIB
	11.8-16.0	22	12-18	
8V	12.5-17.0	36	18-27	8V = 0.59 R8V = 0.70/RIB
	18.0-22.4	40	20-30	

Why Do Belts Fail? Belt Wear/Failure Recognition



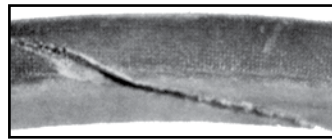
Exposure to Oil & Grease

Cause: Belt swelling, exterior softness and bottom envelope seam to open/split.
Remedy: Splash Guards, don't over-lubricate, clean belts/sheaves.



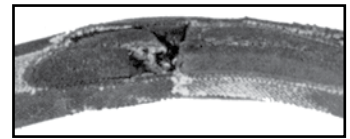
Weathering or "Crazing"

Cause: Belt drive elements, as well as aggravation by small sheaves.
Remedy: Check tension, provide drive protection and replace belt(s).



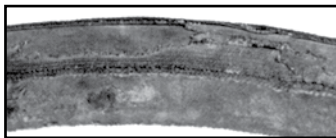
Cut Bottom & Sidewall

Cause: Belt being pried over sheave during installation, as cut above indicates.
Remedy: Use proper length belts and tension properly when installing.



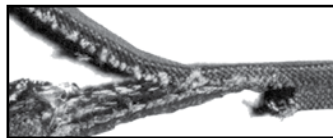
Severe Localized Wear

Cause: Spin burn caused by a frozen or locked drive sheave not able to turn freely.
Remedy: Determine that drive components turn freely and, if necessary, tighten belt.



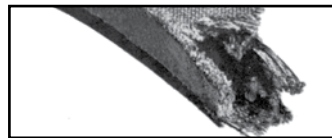
Rough Sheave Sidewalls

Cause: Constant slippage due to belt being misaligned on worn sheaves.
Remedy: Use correct belt size. Align or replace sheaves.



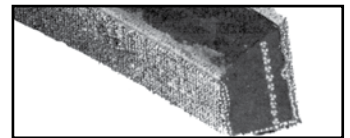
Broken Belt

Cause: Rough sheaves and dust build-up can both cause belt failure and severe envelope wear.
Remedy: Shield the drive.



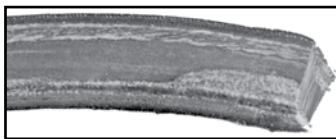
Snub Break

Cause: Cover wear indicates slippage and clean break reveals sudden snap due to non-proper drive tensioning.
Remedy: Maintain proper drive tension.



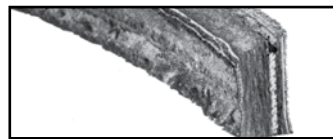
Abrasion

Cause: Sidewall wear a result of foreign material and rust in sheaves. Belt dropped to bottom of sheave groove.
Remedy: Dust guards to prevent abrasion.



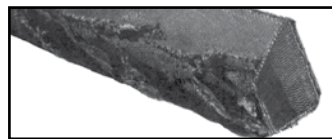
Worn Side Pattern

Cause: Worn or misaligned sheaves.
Remedy: Retension drive to stop slipping, realign sheaves (replace if needed), replace belt if incorrect size.



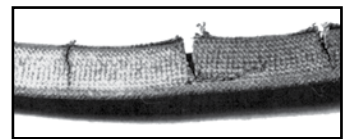
Oil Deterioration

Cause: Rubber softened by excessive oil exposure, causing deterioration.
Remedy: Splash guards to protect drive against oil.



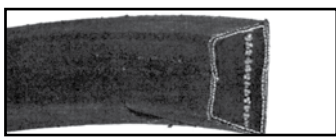
Cover Fabric Rupture

Cause: Fabric covering ruptured during installation due to belt being pried over belt sheave.
Remedy: Proper installation of belts.



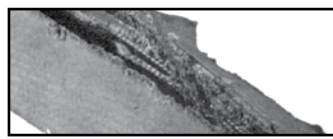
Base Cracking

Cause: Loose tensioning. Belt slippage causes heat build-up and gradual under-cord hardening.
Remedy: New belt. Proper tensioning.



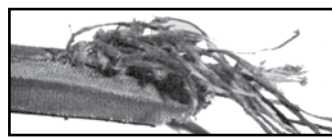
Distorted Belt

Cause: Distortion caused by broken cords or adhesion breakdown.
Remedy: Avoid prying on belts. Check sheaves for recommended diameters.



Ply Separation

Cause: Split along pitch line indicating belt ran on too small diameter of sheave.
Remedy: Install a (x) cogged type belt.



Ruptured Belt

Cause: Ruptured cords in the plies, caused by high shock load on foreign object between belt and sheave groove.
Remedy: Check tension, shield drive.



Slip Burn

Cause: Belt slipping under starting or stalling load.
Remedy: Replace belt and tighten drives until slipping stops.



POPULAR OEM REPLACEMENT BELTS

Jason produces OEM equivalent belts using OEM specifications. These belts feature special construction or sizes not accommodated in our universal MXV™ line-up.

OEM	Part No.	Also Replaces	Description
AYP	106729		38", 10 & 11 HP Front Engine
AYP	130969	108310	Lawn Tractor belt - fits most 12, 12 1/2 and 14 Horsepower (Hp) AYP, Bernard, Husqvarna, Craftsman Rally 42 inch cut front engine lawn tractors.
AYP	131264		Fits Husqvarna, Weedeater 10-13 HP 36 inch deck front engine machines, AYP 36 inch cut side discharge narrow chassis, the early 36 inch riding lawn tractor lawn mower.
AYP	138255	130801, 160855	42" and 50" Decks with 25HP Kohler engine.
AYP	140294		Lawn Tractor Belt fits models of 18 to 21HP AYP, Bernard, Husqvarna, Craftsman 42 inch, 44 inch; deck side discharge.
AYP	144200	104778, 105364, 105380, 121979	AYP Craftsman lawn tractor belt fits most models of AYP, Bernard, Husqvarna, Craftsman Lawn Tractors 42 inch cut. Fits models with side discharge AYP 42 inch cut decks with double idler pulley HUSQVARNA YTH 150.
AYP	144959		Lawn Tractor Belt fits most models of AYP, Bernard, Husqvarna Rally and Craftsman 42 inch & 46 inch deck intermediate belt.
AYP	174368		Husqvarna 48 inch Primary deck belt for use on Husqvarna lawn tractor/ride on mowers models: HAU18H48A, YTH1848XPA, YTH1848XPB, YTH1848XPC, YTH2049A. Also fits Craftsman DYT 4000 24 HP 48 inch cut side discharge model 917.277620. This belt goes from engine to deck NOT round the spindles. Lawn Mower Belt Replaces (OEM): AYP 174368 HUSQVARNA 532 17 43-68 POULAN PP13007 Fits Models: HUSQVARNA YTH1848XP and YTH1848XPF, 48" cut decks Poulan Pro DPR22448STA, DPR22H48STB, DPR22H48STC & PR24PH48STA Application: Primary Deck Length: 90" Width: 5/8"
AYP	180214		AYP Lawn Tractor/ ride on mower deck belt - fits most models of AYP, Husqvarna, Craftsman, Rally 38 inch side discharge models (large chassis) with 5 star blade, generally before 2006 models.
AYP	180215	180215	AYP Lawn Tractor / ride on mower cutter deck mower belt fits most models of 16 to 21 HP AYP, Husqvarna Craftsman McCulloch fitted with 42 inch side discharge mower deck fitted with standard hi-lift or mulching mower blades.
AYP	180217	180217, 165555	AYP Craftsman hexagonal lawn tractor/ride on mower cutter deck belt to fit models of 36 inch rear discharge, AYP, Craftsman, Husqvarna, & McCulloch, both manual & hydrostatic transmission.
AYP	180808	PP13008	Replacement AYP / Husqvarna McCulloch lawn tractor ride on mower belt, 48 inch secondary deck belt to fit Husqvarna YTH1848XP & YTH1848XPF.
AYP	402009	402009, 169178	AYP, Husqvarna Hexagonal belt fits 42 inch rear eject riding tractor mowers with rear collector (not side tube), Craftsman, Rally, Husqvarna, McCulloch.
BOBCAT/ RANSOMES	38249		Traction Wheel Drive - Dual Rib
BOBCAT/ RANSOMES	38523		Traction Wheel Drive - Dual Rib
CASTEL GARDEN	35065600/0		Castel Garden TC102
CASTEL GARDEN	35065601/0		Castel Garden TC122
MTD	754-0280	954-0280A	Primary Drive Belt (From the Engine Pulley to the Variable Speed Pulley) on most 38" & 42" Riding Mowers.
MTD	754-0281	954-0281	Secondary Drive Belt (From Variable Speed Pulley to transaxle) on most 38" & 42" Riding Mowers
MTD	754-0329	954-0329	38", Engine to Deck

POPULAR OEM REPLACEMENT BELTS



OEM	Part No.	Also Replaces	Description
MTD	754-0346	954-0346	Self - Propelled, 462R 479R
MTD	754-0349	954-0349	46", Deck Drive
MTD	754-0350	954-0350	46" deep deck for 800 Series Garden Tractor, except Auto Drive models 1999 & after.
MTD	754-0358	140-180	Variable speed pulley to transaxle on most 46" riding mowers.
MTD	754-0362	820-849	Variable speed pulley to transmission on 800 series 2-speed garden tractor 1996 & prior.
MTD	754-0363	954-0363	Deck Belt, Fits 36" & 38" deep decks on 400 Series Riders & 50" deep decks on 800 Series Garden Tractor.
MTD	754-0364	954-0364	36" & 38" deep decks on 400 Series Riders & 50" deep decks on 800 Series Garden Tractor (1989 - 1998)
MTD	754-0367	954-0367	Snow Blower Auger
MTD	754-0370	954-0370	Variable Speed Pulley to Transmission Pulley on 600 series lawn tractors 1990 & after.
MTD	754-0371	954-0371A	Deck Belt, Fits all MTD 42" deep deck 600 Series Lawn Tractors, except Auto Drive models 1999 & after.
MTD	754-0433	954-0433	38" Deck, side discharge
MTD	754-0434	954-0434	Engine to transmission
MTD	754-0438	954-0438	Tiller transmission to engine
MTD	754-0439	954-0439	46" deep deck 600 series lawn tractor, (except auto drive step thru frame models 1999 & after).
MTD	754-0440	954-0440	46" deep deck 600 series lawn tractor, (except auto drive step thru frame models 1999 & after).
MTD	754-0441	954-0441	Engine to Transmission on 600 series hydrostatic MTD lawn tractors, 2000 & prior.
MTD	754-0443A	954-0443A, 754-0329	38" Cut 800 Series Mowers, covered deck belt.
MTD	754-0444	954-0444	Variable Speed Pulley to Transmission Pulley
MTD	754-0453	954-0453	27.5" Deck, Variable Speed Pulley to Transmission Pulley
MTD	754-0461	954-0461	Transmission to Engine
MTD	754-0465	954-0465	Engine to Transmission
MTD	754-0468	954-0468	42", 46" Deck, variable speed to transmission
MTD	754-0474	954-0474	46" deep deck, deck pulley to lower engine pulley on auto drive step thru frame lawn tractors 1999 & after, and MTD/Yard-Man Revolution 2001 & after.
MTD	754-0475	954-0475	50" Deck to lower Engine
MTD	754-0476	954-0476	46" Deck pulley to lower engine pulley on auto drive step thru frame garden tractors 1999 & after.
MURRAY	37X43		36" decks, rear and side discharge uniframe
MURRAY	37X56		45" deck, garden tractor
MURRAY	37X62	37X62MA	Fits 40" cut LT Tractors, new models since 1989 with side discharge.
MURRAY	37X63	037X63MA	Fits 38" cut, new models since 1989.
MURRAY	37X64	037X64MA	Motion Drive 21" Aerovac
MURRAY	37X65	037X65MA	25" & 30" cut, rear engine riders with transaxle. 1990 and Newer.
MURRAY	37X66		46" cut, light rail frame decks 1990 and newer. Also fits Scotts.
MURRAY	37X69		46" engine to deck
MURRAY	37X86	037X86MA	38" cut, light rail frame
MURRAY	37X88	037X88MA	42" cut, Hydro Tractor Blade drive belt
SIMPLICITY	1668066		42" Deck belt
SIMPLICITY	1703466		48" Deck belt
SNAPPER	1-2354		V21 Trans, self propelled mower
SNAPPER	1-2508		V21, 3.5/4.0 HP Engine

LAWN AND GARDEN EQUIPMENT PART NUMBERS

NOTE: FHP Belt may be upgraded to the MXV Belt, however the FHP Belt SHOULD NOT be substituted for the MXV Belt

Alphabetical sequence by manufacturer

OEM #	Belt No.	OEM #	Belt No.	OEM #	Belt No.	OEM #	Belt No.	OEM #	Belt No.
AIRCAP		ALLIS CHALMERS/ DEUTZ		ALLIS CHALMERS/ DEUTZ		ARIENS/ GRAVELY		ARIENS/ GRAVELY	
538MXV3-310	1601405MXV4-400	2029660MXV4-620	72050MXV5-440	15355P1MXV4-380
644MXV3-350	1601524MXV4-780	2029665MXV4-1000	72052MXV5-690	17798P1MXV4-400
10661MXV4-400	1601672MXV4-610	2029715MXV4-790	72056MXV4-320	34X101MXV5-490
10713MXV4-320	1601695MXV4-430	2029748MXV4-340	72060MXV4-280	34X102MXV5-360
10717MXV3-300	1602157MXV4-730	2029789MXV4-340	72061MXV4-350	34X104MXV3-320
10720MXV5-740	1602969MXV4-480	2029828MXV3-370	72065MXV4-360	34X105MXV3-250
10722MXV4-510	1603075MXV4-930	2029829MXV4-350	72066MXV3-340	34X69MXV5-410
16301MXV4-310	1604406MXV4-830	2087648MXV4-720	72072MXV4-350	34X88MXV3-350
754200MXV5-380	1605816MXV4-840	2087732MXV4-780	72073MXV3-250	34X89MXV4-360
754241MXV5-350	1607051MXV4-700	2087759MXV4-660	72074MXV3-340	34X92MXV5-440
754244MXV4-400	1607812MXV4-820	2087778MXV4-660	72076MXV4-350	5070A22MXV5-560
754245MXV4-590	1607813MXV4-830	2087836MXV4-740	72078MXV4-770	5163P1MXV4-310
1540241MXV5-350	1609767MXV4-520	2088783MXV3-340	72083MXV4-360	51653P1MXV4-310
1540329MXV5-690	1610577MXV4-560			72084MXV3-270	A408MXV5-710
7540145MXV5-690	1610578MXV4-250			72085MXV3-290	A409MXV5-580
7540151MXV5-670	1610578MXV4-250			72086MXV4-400	M475MXV5-300
7540198MXV4-620	1615201MXV4-730			72089MXV4-360		
7540238MXV5-490	1663009MXV3-280			72093MXV4-310		
7540244MXV4-400	1664457MXV4-410			72095MXV4-460		
7540245MXV4-590	1664946MXV4-570			72096MXV4-500		
7540326MXV4-620	1665706MXV4-390			72097MXV3-230		
7540367MXV4-340	1666654MXV3-320			72098MXV3-330		
7540195AMXV4-540	1666655MXV4-410			72099MXV3-280		
SP2MXV4-250	1667200MXV4-340			72101MXV4-580		
		1668065MXV4-690			72102MXV4-750		
		1671788MXV3-340			72103MXV4-890		
		1672732MXV3-370			72105MXV4-350		
		1673667MXV4-950			72106MXV3-370		
		1674312MXV4-350			72107MXV3-310		
		1675005MXV4-400			72109MXV4-320		
		1676460MXV4-430			72110MXV4-710		
		1676461MXV3-330			72111MXV4-340		
		1701251MXV4-420			72112MXV3-350		
		1701257MXV4-420			72115MXV4-670		
		1707740MXV4-690			72116MXV4-710		
		2025341MXV4-440			72117MXV4-300		
		2025364MXV4-820			72118MXV4-470		
		2025461MXV3-360			72119MXV4-300		
		2025463MXV4-530			72121MXV4-340		
		2025492MXV5-450			72122MXV4-720		
		2025641MXV5-490			72123MXV4-520		
		2025663MXV4-350			72124MXV4-650		
		2025712MXV5-490			72126MXV3-330		
		2025879MXV4-630			72127MXV3-380		
		2025893MXV4-480			72131MXV3-360		
		2026066MXV3-380			72134MXV5-330		
		2026081MXV4-360			72135MXV4-680		
		2026266MXV4-380			72135MXV5-680		
		2026268MXV4-390			72136MXV4-510		
		2026270MXV4-350			72137MXV4-310		
		2026324MXV4-910			72138MXV3-300		
		2026378MXV3-220			72138MXV3-330		
		2026499MXV4-550			72139MXV4-960		
		2026755MXV4-390			72142MXV4-340		
		2026869MXV3-390			72144MXV4-890		
		2027102MXV4-610			72148MXV4-580		
		2027114MXV4-850			72155MXV4-650		
		2027121MXV4-450			72156MXV4-350		
		2027134MXV4-700			72157MXV3-330		
		2027168MXV4-340			72159MXV3-210		
		2027581MXV4-470			72161MXV4-640		
		2027624MXV5-960			72162MXV4-640		
		2027639MXV5-880			72163MXV4-640		
		2028035MXV4-850			72240MXV3-250		
		2028241MXV4-310			72241MXV3-240		
		2028474MXV4-490			5163131MXV4-310		
		2028549MXV4-240			10860131MXV3-350		
		2028766MXV4-930			12077131MXV5-410		
		2028988MXV5-490			15242131MXV4-290		
		2029056MXV4-570			15355131MXV4-380		
		2029223MXV4-440			17798131MXV4-400		
		2029348MXV4-350			51653131MXV4-310		
		2029350MXV4-530			10860P1MXV3-350		
		2029622MXV4-700			12077P1MXV5-410		
						15242P1MXV4-290		

LAWN AND GARDEN EQUIPMENT PART NUMBERS

NOTE: FHP Belt may be upgraded to the MXV Belt, however the FHP Belt SHOULD NOT be substituted for the MXV Belt
Alphabetical sequence by manufacturer

OEM #	Belt No.	OEM #	Belt No.	OEM #	Belt No.	OEM #	Belt No.	OEM #	Belt No.		
BRIGGS & STRATTON (MURRAY)				BRIGGS & STRATTON (MURRAY)				BRIGGS & STRATTON (MURRAY)			
1245	MXV5-240	037X65MA	MXV4-300	37X22	MXV4-990	MT37X132	MXV3-350	CRAFTSMAN			
1254	MXV4-490	037X66	MXV4-470	37X23	MXV4-430	MT579932	MXV3-330	585416	MXV4-380		
1256	MXV4-330	037X66MA	MXV4-470	37X25	MXV3-380	MT579932MA	MXV3-330	585436	MXV4-380		
1257	MXV4-650	037X68	MXV4-1010	37X26	MXV4-880	MT585416	MXV4-380	760928	MXV3-350		
10716	MXV4-350	037X68MA	MXV4-1010	37X27	MXV4-830	MT585416MA	MXV4-380	1726470	MXV4-380		
11361	MXV4-760	037X69	MXV4-800	37X28	MXV4-480	MU037X74MA	MXV4-570	1726471	MXV4-730		
11483	MXV5-430	037X69MA	MXV4-800	37X29	MXV3-390	MU037X87	MXV4-970	2002648	MXV4-580		
11904	MXV4-910	037X70	MXV4-770	37X3	MXV4-460	MU037X87MA	MXV4-970	4143733	MXV5-1510		
12903	MXV4-580	037X70A	MXV4-770	37X31	MXV4-930	MU1742461YP	MXV4-570	90003526	MXV4-300		
16297	MXV5-770	037X70MA	MXV4-770	37X32	MXV4-450	MU37X110	MXV4-440	532197253	MXV4-1010		
20117	MXV4-560	037X74MA	MXV4-570	37X34	MXV4-770	MU37X110MA	MXV4-440	532405143	MXV4-1070		
20551	MXV4-440	037X75	MXV4-910	37X36	MXV4-550	MU37X111MA	MXV4-450	532429636	MXV4-1010		
20555	MXV4-440	037X75A	MXV4-910	37X37	MXV4-500	MU37X57	MXV4-540	120302X	MXV4-900		
20556	MXV4-480	037X75MA	MXV4-910	37X38	MXV4-400	MU37X65	MXV4-300	754-0131	MXV3-350		
20558	MXV4-640	037X75WMA	MXV4-910	37X39	MXV4-830			754-0222A	MXV4-440		
20715	MXV4-350	037X80	MXV4-860	37X40	MXV4-620			754-04014	MXV3-270		
20716	MXV4-350	037X80MA	MXV4-860	37X43	MXV4-830			754-04201A	MXV3-360		
20717	MXV4-560	037X86	MXV4-840	37X44	MXV4-830			954-04050	MXV4-350		
21049	MXV4-550	037X86A	MXV4-840	37X45	MXV4-910			954-04202	MXV3-360		
21058	MXV4-630	037X86A	MXV4-840	37X46	MXV4-250			954-04260	MXV3-340		
21059	MXV4-440	037X86MA	MXV4-840	37X48	MXV4-730			037X22MA	MXV4-990		
21508	MXV4-630	037X87	MXV4-970	37X48	MXV4-730			037X38MA	MXV4-400		
21614	MXV4-850	037X87MA	MXV4-970	37X5	MXV4-350			037X40MA	MXV4-620		
23072	MXV4-430	037X88	MXV4-880	37X5	MXV4-350			037X43MA	MXV4-830		
23098	MXV4-620	037X88A	MXV4-880	37X51	MXV4-360			037X44MA	MXV4-500		
23148	MXV4-620	037X88HDMA	MXV4-880	37X55	MXV4-910			L19	MXV4-360		
23347	MXV4-820	037X88MA	MXV4-880	37X56	MXV4-820			L20	MXV4-350		
23496	MXV4-740	037X88WMA	MXV4-880	37X57	MXV4-540			L21	MXV4-390		
23796	MXV4-590	037X89	MXV4-890	37X59	MXV4-790			L643	MXV4-500		
23853	MXV4-430	037X89A	MXV4-890	37X6	MXV4-350			P78153	MXV5-470		
23882	MXV4-590	037X89HDMA	MXV4-890	37X61	MXV4-950			PL0019	MXV4-360		
24116	MXV4-950	037X89MA	MXV4-890	37X62	MXV4-860			PL0020	MXV4-350		
24176	MXV4-950	037X89MA	MXV4-890	37X63	MXV4-830			PL0021	MXV4-380		
24256	MXV4-880	037X92	MXV4-530	37X65	MXV4-300			PL0148	MXV4-280		
75121	MXV4-480	037X92MA	MXV4-530	37X66	MXV4-470			PL029	MXV5-440		
75147	MXV3-390	037X93	MXV5-1090	37X68	MXV4-1010			PL0511	MXV5-540		
75370	MXV3-260	037X93MA	MXV5-1090	37X69	MXV4-800			PL0543	MXV4-430		
199612	MXV4-970	037X94	MXV3-340	37X70	MXV4-770			PL0619	MXV5-440		
201153	MXV4-620	037X94MA	MXV3-340	37X71	MXV4-560			PL0661	MXV5-580		
700123	MXV5-350	037X96MA	MXV4-890	37X77	MXV4-560			PL0679	MXV5-660		
703761	MXV3-310	1713549SM	MXV4-700	37X70	MXV4-770			PL0848	MXV5-400		
7100883	MXV3-210	1719911SM	MXV4-1170	37X71	MXV4-560			PL0861	MXV5-460		
0037X3	MXV4-460	1732955SM	MXV4-940	37X75	MXV4-910			PL8002	MXV5-440		
0037X3MA	MXV4-460	1734048SM	MXV4-1030	37X80	MXV4-860			PL8153	MXV5-470		
037X12	MXV4-550	1734130SM	MXV4-700	37X86	MXV4-840						
037X12MA	MXV4-550	1737441YP	MXV4-880	37X87	MXV4-970						
037X22	MXV4-990	1751417YP	AX36	37X88	MXV4-880						
037X22MA	MXV4-990	20557	MXV4-460	37X89	MXV4-860						
037X26	MXV4-880	21615	MXV4-950	37X9	MXV5-1090						
037X26MA	MXV4-880	21649	MXV4-550	37X94	MXV3-340						
037X38	MXV4-400	23748	MXV4-620	37X96	MXV4-890						
037X38MA	MXV4-400	23749	MXV4-990	579932MA	MXV3-330						
037X40	MXV4-620	27X27	MXV4-830	7035500YP	MXV4-840						
037X40MA	MXV4-620	333721MA	350J10	7101749MA	MXV4-970						
037X43	MXV4-830	37X1	MXV4-560	7101794YP	MXV4-890						
037X43MA	MXV4-830	37X10	MXV4-850	710193	MXV4-840						
037X45	MXV4-910	37X100	MXV3-340	710209	MXV4-860						
037X45MA	MXV4-910	37X100MA	MXV3-340	710213	MXV4-880						
037X57	MXV4-540	37X101	MXV3-340	710216	MXV4-470						
037X57A	MXV4-540	37X101MA	MXV3-340	710217	MXV4-890						
037X61	MXV4-950	37X101MA	MXV3-340	7103362YP	MXV3-320						
037X61AMA	MXV4-950	37X106MA	MXV4-890	7103364YP	MXV3-320						
037X61MA	MXV4-950	37X11	MXV4-950	710341	MXV4-970						
037X61WMA	MXV4-950	37X110	MXV4-440	7104084YP	MXV3-330						
037X62	MXV4-860	37X110MA	MXV4-440	710531	MXV4-950						
037X62A	MXV4-860	37X112MA	MXV5-660	760976MA	MXV3-350						
037X62MA	MXV4-860	37X12	MXV4-550	761788MA	MXV4-390						
037X62WMA	MXV4-860	37X13	MXV3-410	885495YP	MXV4-810						
037X63	MXV4-830	37X131MA	MXV4-410	885895YP	MXV4-480						
037X63A	MXV4-830	37X135MA	MXV3-350	954-04259A	MXV4-340						
037X63MA	MXV4-830	37X14	MXV4-430	954-04285	MXV5-350						
037X65	MXV4-300	37X15	MXV4-620	954-0469A	MXV5-910						
		37X16	MXV4-590	954-05001	MXV4-430						
		37X17	MXV4-940	MT1736421YP	MXV4-380						
		37X21	MXV4-620	MT333721MA	350J10						

LAWN AND GARDEN EQUIPMENT PART NUMBERS

NOTE: FHP Belt may be upgraded to the MXV Belt, however the FHP Belt SHOULD NOT be substituted for the MXV Belt
Alphabetical sequence by manufacturer

OEM #	Belt No.	OEM #	Belt No.	OEM #	Belt No.	OEM #	Belt No.	OEM #	Belt No.
WESTERN		WESTERN		WESTERN		YARDMAN		YARDMAN	
754109	MXV4-430	7540107	MXV4-300	7540936	MXV4-470	754208	MXV4-550	7540219	MXV4-260
754111	MXV4-450	7540108	MXV4-460	7540937	MXV5-590	754214	MXV4-500	7540220	MXV5-270
754112	MXV5-800	7540109	MXV4-430	60D56	MXV4-310	754220	MXV5-270	7540221	MXV5-520
754113	MXV5-480	7540111	MXV4-450	60D57	MXV4-300	754221	MXV5-520	7540222	MXV4-440
754114	MXV4-240	7540112	MXV5-800	754-0101	MXV3-350	754222	MXV4-440	7540223	MXV3-360
754115	MXV5-610	7540113	MXV5-480	P54239	MXV4-290	754230	MXV4-560	7540224	MXV5-250
754116	MXV4-420	7540114	MXV4-240	P54242	MXV4-320	754231	MXV4-280	7540225	MXV4-820
754118	MXV5-630	7540115	MXV5-610			754246	MXV4-590	7540227	MXV5-630
754121	MXV4-310	7540116	MXV4-420			754250	MXV4-530	7540229	MXV4-520
754124	MXV4-570	7540118	MXV5-630			754251	MXV4-510	7540231	MXV4-280
754127	MXV5-660	7540121	MXV4-310			754254	MXV4-190	7540234	MXV4-410
754134	MXV3-330	7540124	MXV4-570			754255	MXV4-350	7540235	MXV4-350
754136	MXV5-310	7540127	MXV5-660			754256	MXV3-290	7540236	MXV4-850
754138	MXV5-500	7540134	MXV3-330			754260	MXV4-510	7540244	MXV4-400
754139	MXV3-380	7540136	MXV5-310			754267	MXV4-590	7540245	MXV4-590
754143	MXV3-280	7540138	MXV5-500			754268	MXV5-510	7540246	MXV4-590
754144	MXV5-550	7540139	MXV3-380			754275	MXV4-530	7540247	MXV4-550
754145	MXV5-690	754109	MXV4-430			1650120	A16A	7540248	MXV4-890
754146	MXV4-330	754111	MXV4-450			1651066	MXV4-640	7540249	MXV5-300
754147	MXV5-520	7540143	MXV3-280			7540104	MXV4-320	7540250	MXV4-530
754151	MXV5-670	7540144	MXV5-550			7540108	MXV4-460	7540251	MXV4-510
754154	MXV4-350	7540145	MXV5-690			7540109	MXV4-430	7540252	MXV4-330
754157	MXV5-280	7540146	MXV4-330			7540114	MXV4-240	7540253	MXV4-430
754163	MXV4-280	7540147	MXV5-520			7540125	MXV4-1050	7540254	A17A
754164	MXV4-630	7540154	MXV4-350			7540136	MXV3-310	7540255	MXV4-350
754165	MXV4-340	7540157	MXV5-280			7540142	MXV3-310	7540256	MXV3-290
754166	MXV5-620	7540163	MXV4-280			7540143	MXV3-280	7540257	MXV3-380
754169	MXV3-360	7540164	MXV4-630			7540144	MXV5-550	7540260	MXV5-510
754173	MXV5-370	7540165	MXV4-340			7540145	MXV5-690	7540261	MXV4-560
754177	MXV4-320	7540166	MXV5-620			7540146	MXV4-330	7540267	MXV4-590
754178	MXV5-820	7540169	MXV3-360			7540154	MXV4-350	7540268	MXV5-510
754179	MXV5-500	7540173	MXV5-370			7540165	MXV4-340	7540271	MXV3-390
754180	MXV5-540	7540177	MXV4-320			7540167	MXV5-640	7540274	MXV4-440
754182	MXV5-810	7540178	MXV5-820			7540169	MXV3-360	7540275	MXV4-380
754183	MXV5-290	7540179	MXV5-500			7540177	MXV4-320	7540278	MXV4-300
754184	MXV4-520	7540180	MXV5-540			7540178	MXV5-820	7540285	MXV4-340
754185	MXV4-490	7540182	MXV5-810			7540185	MXV4-490	7540290	MXV4-470
754188	MXV5-510	7540183	MXV5-290			7540187	B22	7540291	MXV4-880
754189	MXV4-440	7540184	MXV4-520			7540188	MXV5-510	7540292	MXV4-260
754191	MXV4-650	7540185	MXV4-490			7540189	MXV4-400	7540326	MXV4-620
754195	MXV4-540	7540188	MXV5-510			7540195	MXV4-540	7540327	MXV5-280
754196	MXV4-300	7540189	MXV4-440			7540196	MXV4-300	7540338	MXV4-770
754198	MXV4-620	7540191	MXV4-650			7540198	MXV4-620	7540347	MXV4-630
754200	MXV4-480	7540195	MXV4-540			7540200	MXV4-480	7540365	MXV4-830
754219	MXV4-260	7540196	MXV4-300			7540201	MXV4-410	7540372	MXV4-810
754239	MXV4-290	7540198	MXV4-620			7540204	MXV4-670	7540441	MXV4-760
754242	MXV4-320	7540200	MXV4-480			7540205	MXV3-320	7544154	MXV4-350
754244	MXV4-400	7540219	MXV4-260			7540206	MXV4-500	7651066	MXV4-640
754245	MXV4-590	7540229	MXV4-520			7540207	MXV4-420	16510666	MXV4-640
754935	MXV4-310	7540239	MXV4-290			7540208	MXV4-550	754-0101	MXV3-350
754936	MXV4-470	7540242	MXV4-320			7540211	MXV5-460	754-0101A	MXV3-350
754937	MXV5-590	7540244	MXV4-400			7540212	MXV5-450	7540373A	MXV5-730
7540103	MXV4-210	7540245	MXV4-590			7540214	MXV4-500	754C142	MXV3-310
7540104	MXV4-320	7540248	MXV4-890			7540216	MXV3-290	954-04259A	MXV4-340
7540105	MXV4-300	7540255	MXV4-350			7540218	MXV5-590		

Jason MXV Series Belts are functional replacements to the printed OEM part numbers. Sizes may vary slightly from OEM belt, but are within RMA (Rubber Manufacturers Association) standards for the application.

AG EQUIPMENT & PUMP BELTING PART NUMBERS

NOTE: FHP Belt may be upgraded to the MXV Belt, however the FHP Belt SHOULD NOT be substituted for the MXV Belt
Alphabetical sequence by manufacturer

OEM #	Belt No.	OEM #	Belt No.	OEM #	Belt No.	OEM #	Belt No.	OEM #	Belt No.
ACE PUMP		ALLIS CHALMERS/ GLEEMER		ALLIS CHALMERS/ GLEEMER		ALLIS CHALMERS/ GLEEMER		ALLIS CHALMERS/ GLEEMER	
BAC-28-10.....	400J10	509860.....	B58	548860.....	B145	1119006.....	B62	1178226.....	C87
BAC-28-10M.....	320J10	511176.....	C128	548861.....	B144	1119007.....	B133	1178329.....	B162
BAC-28-10M-150...	360J10	512679.....	C135	548862.....	B106	1121342.....	B69	1178442.....	C214
BAC-28-150.....	440J10	512751.....	C75	548863.....	C124	1122494.....	C238	1179490.....	B122
BAC-28-8.....	400J8	514112.....	B64	548866.....	B73	1123452.....	B80	1180125.....	B75
BAC-28-8M.....	320J8	514908.....	D69	548869.....	C100	1124461.....	B52	1183251.....	B75
AG CHEMICAL		514909.....	C52	548870.....	C81	1125972.....	B79	1183718.....	B78
9489.....	3VX800	514910.....	C43	548871.....	A90	1125974.....	D160	1187282.....	B195
94105.....	A68	515768.....	C96	548874.....	B85	1125976.....	C72	1187728.....	C104
ALLIS CHALMERS/ GLEEMER		516796.....	C83	548875.....	BB75	1125977.....	B124	1187779.....	C75(2)
34647.....	B100	516800.....	B195	556244.....	D97	1125978.....	D128	1188075.....	B113(2)
48716.....	B75	516801.....	B120	558323.....	B79	1125979.....	B190	1190749.....	A126
69704.....	B81	516876.....	B38	558567.....	BB112	1125980.....	CC128	1190750.....	A118
86214.....	CX81	516976.....	C83	559862.....	A90	1125981.....	D93	1190876.....	A106
86971.....	CX81	517303.....	C81	559863.....	A81	1126118.....	B53	1192282.....	C87
108209.....	SPA2067	517444.....	C60	560162.....	B118	1126320.....	B85	1194116.....	C156
125980.....	C131	518463.....	B46	560163.....	B114	1126448.....	C223	1197878.....	A57(2)
133672.....	C78	518465.....	A48	560164.....	B73	1126587.....	B105	1197883.....	B88
163011.....	SPA1807	518656.....	D98	560375.....	C66	1126732.....	C267	1197895.....	A93
165048.....	MXV4-850	519007.....	C128	561604.....	C85	1127198.....	B178	1300867.....	C190
174911.....	MXV4-440	519731.....	C126	563619.....	A98	1127199.....	B182	1301859.....	B142(2)
243834.....	B83	520140.....	B71	571100.....	A95	1127553.....	C251	1301877.....	A105
248322.....	B75	520173.....	B175	573681.....	C72	1128379.....	B222	1302279.....	C290
248324.....	B105	521078.....	B112	577016.....	B68	1129967.....	B182	1302283.....	B234
248328.....	B100	522034.....	B101	577851.....	C78	1129986.....	C140	1305090.....	C116
248331.....	B144	523202.....	B130	577870.....	A94	1130177.....	C81	1305993.....	C106
248332.....	B180	523693.....	B61	577921.....	B160	1130178.....	C113	1305994.....	C119
248334.....	B83	525203.....	C134	584284.....	C69	1130314.....	D147	1306291.....	A110
248337.....	B173	525347.....	B46	673606.....	CX81	1130442.....	C73	1306451.....	D148
248338.....	B158	525413.....	A62	802120.....	C45	1130754.....	B149	1308584.....	B195
248339.....	B133	525596.....	B117	802168.....	C51	1130979.....	B175	1309150.....	B164(2)
248342.....	C60	525742.....	B81	802171.....	C51	1131237.....	C233	1309571.....	A63
248346.....	C105	525824.....	C162	802382.....	A42	1132108.....	D116	1309967.....	C165
248347.....	C112	526155.....	B87	802957.....	C39	1134654.....	C83	1310380.....	C113
248351.....	C158	526369.....	B87	802958.....	C39	1135296.....	C160	1311275.....	B131
248352.....	C180	526370.....	B87	803459.....	B43	1135748.....	D72	1312339.....	A107
248353.....	C190	526806.....	B231	803460.....	B46	1136325.....	C251	1313396.....	C131
248354.....	C195	526842.....	B136	803461.....	B46	1136630.....	C144	1313804.....	B82
248355.....	C-210	526899.....	B100	803587.....	C47	1137310.....	C72	1316263.....	B173(2)
249008.....	B72	529192.....	B50	803770.....	C105	1137520.....	D119	1316714.....	C136
249010.....	C173	529433.....	B42	804122.....	C104	1138949.....	D109	1319657.....	BB112
260328.....	A53	530022.....	C101	804201.....	C103	1139622.....	C68	1320449.....	B153(2)
313804.....	B82	530798.....	A60	804302.....	C58	1139962.....	C150	1321691.....	B87
325847.....	C116	531099.....	C100	805114.....	C48	1139964.....	C89	1322395.....	C83
339886.....	C83	531693.....	C119	805120.....	C45	1139965.....	C83	1322828.....	C130
358134.....	B84	531740.....	C73	822940.....	A38	1140441.....	A83	1322834.....	C122
501470.....	B53	533400.....	C77	823092.....	B38	1140809.....	D115	1324294.....	C134
501505.....	B240	534515.....	A56	823358.....	A26	1140990.....	B229	1324690.....	C119
501507.....	B173	534565.....	B52	825924.....	B108	1140991.....	B186	1324877.....	C131
501510.....	B165	534875.....	C85	826274.....	3VX630	1140992.....	B175	1324878.....	C132
501511.....	C119	535127.....	C114	826275.....	5VX1000	1141215.....	B158	1325150.....	B126(2)
501542.....	B60	535279.....	B70	1105320.....	B124	1142831.....	C257	1325847.....	C116
502434.....	C104	536516.....	A39	1109103.....	B46	1144488.....	A90	1326253.....	B188
502435.....	B240	538180.....	C110	1109660.....	B112	1146258.....	C142	1326830.....	C168
502436.....	B171	538268.....	B180	1109661.....	B97	1159352.....	B133	1328523.....	C128
502437.....	B60	539207.....	D104	1110659.....	B103	1160836.....	B215	1333673.....	C96
502438.....	B85	539525.....	B71	1112395.....	B105	11611949.....	C173	1334659.....	C103
502439.....	B145	539648.....	B68	1112834.....	B60	1164353.....	A74	1334919.....	B133
503303.....	D75	539685.....	BB128	1113847.....	B43	1165613.....	C131	1335475.....	C183
503304.....	B106	539686.....	B40	1115318.....	C63	1165927.....	D72	1336199.....	C87
503305.....	B180	541718.....	C145	1115320.....	B124	1170191.....	C131	1336210.....	C61
503307.....	A71	542180.....	B98	1116031.....	CC134	1170932.....	A85	1336307.....	A57(2)
503308.....	A46	542517.....	B140	1116033.....	D124	1171755.....	B68	1337000.....	B94
506147.....	B210	542517.....	B141	1116054.....	B207	1171756.....	B68	1338949.....	D110
506148.....	B188	542800.....	C68	1116055.....	B160	1171907.....	SPZ1637(2)	1339419.....	C124
506482.....	B158	543900.....	B90	1116528.....	B75	1172562.....	B256	1339768.....	C105
506552.....	B156	543920.....	C90	1116838.....	B87	1173472.....	C345	1339772.....	C142
506553.....	C60	543920.....	C90	1117049.....	D160	1175713.....	B71(2)	1339886.....	C83
506910.....	CC144	546672.....	B85	1117540.....	D158	1176312.....	A74	1344935.....	C83
507965.....	B128	547078.....	BB136	1117717.....	C128	1176400.....	B242	1346299.....	B210
		547116.....	B98	1117718.....	D128	1176492.....	B73	1359681.....	B88(2)
		547286.....	C137	1118003.....	C144	1177597.....	C102	1500256.....	BB92
		548081.....	D112	1118629.....	B51	1177795.....	B74	1501511.....	C119

AG EQUIPMENT & PUMP BELT PART NUMBERS

NOTE: FHP Belt may be upgraded to the MXV Belt, however the FHP Belt SHOULD NOT be substituted for the MXV Belt
Alphabetical sequence by manufacturer

OEM #	Belt No.	OEM #	Belt No.	OEM #	Belt No.	OEM #	Belt No.	OEM #	Belt No.
CONTINENTAL BELTON		DEWEZE		EXCEL INDUSTRIES		FARMHAND		FORD/NEW HOLLAND	
KA252C173.....	C173	940020.....	3R/3VX315	020-1025-4.....	AX31	8916.....	C131	36683.....	B126(4)
KA253C180.....	C180	942005.....	3VX450	020-1026-2.....	AX33	FARRAR MACHINE		37004.....	C51
CONTREE		942014.....	A120	020-1027-0.....	AX35			39184.....	C61(5)
BAC-28-10.....	400J10	942096.....	3R/3VX300	020-1028-8.....	3R/3VX630	B56.....	B56	39601.....	C52
BAC-28-10-150.....	320J10	DISTRIVELEZ		020-1029-6.....	A52(2)	C60.....	C60	40624.....	C60
BAC-28-10-150.....	360J10	32X4394.....	D167	020-1030-4.....	3VX600	C68.....	C68	40706.....	C104
BAC-28-10-150.....	440J10	DRESSER INDUSTRIES		020-1036-1.....	B32	FIELD QUEEN		41071.....	C61(5)
BAC-28-8.....	320J8	11338.....	C51	020-1038-7.....	B34			42001.....	B114(5)
CROSS EQUIPMENT		14589.....	B42	020-1039-5.....	BX63			42002.....	B113(5)
HB155.....	B154	14605.....	B120	020-1042-9.....	BX51	FINN CORP.		42609.....	A38
CUSTOM FARM		14613.....	B162	FARMHAND				42615.....	B38
5523.....	A75(3)	18283.....	B55	4805.....	5VX1120			43174.....	D80
5526.....	A75(3)	1278510.....	A60	15806.....	B68	FLEMING MFG		43950.....	B128(2)
96531.....	B150	017-1321-3.....	A41(2)	17380.....	C173			43951.....	B128(5)
99050.....	B158	017-1390-8.....	A26	17939.....	B54			45089.....	B80(5)
D K MFG.		474569R1.....	C128	17940.....	B52			46095.....	C90
661565.....	B75	478261R91.....	B51(2)	21173.....	B83	FOOD MACHINE		46914.....	C85
661566.....	B112	545540R1.....	C72	21217.....	C173			47641.....	C79(4)
901559.....	B97	DURA CORP.		21618.....	17415			47642.....	C79
901563.....	B136	61106.....	C128	47272.....	5VX900			47791.....	B96(5)
901565.....	B90	76047.....	A39	76047.....	A39			47808.....	3L230
901566.....	B133	76105.....	BX60(2)	76107.....	B54			47844.....	C160
901568.....	B130	76171.....	B54	76173.....	B83			48224.....	B96(5)
902160.....	B92	76173.....	B83	76174.....	B90			48225.....	B80(5)
IV580143.....	B146	76178.....	B133	76178.....	B133			48390.....	BB112
DAFFIN		76191.....	C85	76191.....	C85			49757.....	C95
4727.....	5VX1000(2)	76192.....	C112	76192.....	C112			54189.....	B68
4873.....	5VX1250(2)	76193.....	C144	76193.....	C144			54713.....	B120(5)
DANUSER		76194.....	C158	76194.....	C158			54714.....	B120(5)
11764.....	B124(2)	76195.....	C173	76195.....	C173			56212.....	C78(2)
11765.....	B51(2)	76197.....	C210	76197.....	C210			56213.....	C78(2)
11766.....	B46(2)	76199.....	C75	76199.....	C75			56321.....	B112(5)
117623.....	B54	76241.....	3V950(2)	76241.....	3V950(2)			56322.....	B112(2)
117626.....	B136	76581.....	3VX900/4	76581.....	3VX900/4			56929.....	BB105
117627.....	B112	77251.....	5VX1060/5	77251.....	5VX1060/5			58417.....	C112
117631.....	C144	77252.....	5VX850/5	77252.....	5VX850/5			58418.....	C112(5)
117635.....	B157(2)	760411.....	A42	760411.....	A42			63106.....	C128
117666.....	A68	760415.....	A49	760415.....	A49			63685.....	SPB1425
117680.....	A26	761710.....	B117	761710.....	B117			63804.....	C98
857706.....	A59	761712.....	B158	761712.....	B158			64180.....	3L310
DAVID MFG.		761718.....	B173	761718.....	B173			64218.....	C78
1025.....	A90(2)	761719.....	B120	761719.....	B120			64234.....	C60
1027.....	A55	761720.....	B144	761720.....	B144			64248.....	C120(2)
DMC0488.....	A48	761721.....	B180	761721.....	B180			64249.....	C120
PT0491.....	B52	761722.....	B76(2)	761722.....	B76(2)			64250.....	C103(2)
PT0492.....	B52	761910.....	C90	761910.....	C90			64251.....	C60(2)
PT0500.....	A60	761913.....	C128	761913.....	C128			64685.....	A49
PT0502.....	A66	761914.....	C180	761914.....	C180			65489.....	B65
PT0512.....	A90	761915.....	C195	761915.....	C195			66232.....	C124
PT0514.....	BB120	1024371.....	C103(2)	1024371.....	C103(2)			66351.....	B79
PT0515.....	A96(2)	1A1023.....	B105(2)	1A1023.....	B105(2)			66352.....	B65
PT0531.....	BX51	1A10372.....	3V800(12)	1A10372.....	3V800(12)			72440.....	4L190
PT0532.....	B50	1A1158.....	2R/3VX800(5)	1A1158.....	2R/3VX800(5)			75440.....	3L190
TO488.....	A48	1A1567.....	B92	1A1567.....	B92			76289.....	C95
DESERT IRRIGATION		1A1569.....	B100	1A1569.....	B100			100047.....	A54(2)
77196.....	AA96	1A3091.....	2R/3VX800	1A3091.....	2R/3VX800			103160.....	915L16
DEWEZE		1A800122.....	B144	1A800122.....	B144			103350.....	A55
940002.....	A128	1A80023.....	B180(2)	1A80023.....	B180(2)			103724.....	A55
940012.....	3R/3VX500	1A981.....	3VX800	1A981.....	3VX800			103725.....	A55(2)
		1R1188.....	3VX800(10)	1R1188.....	3VX800(10)			105215.....	A60(2)
		7624-4.....	3R/3VX750	7624-4.....	3R/3VX750			105763.....	B71(4)
		A180022.....	B144	A180022.....	B144			106236.....	B74
		A3031.....	2R/3VX800(4)	A3031.....	2R/3VX800(4)			113035.....	B178
		A70973.....	B50(2)	A70973.....	B50(2)			113036.....	B225
		A7102-B.....	B92	A7102-B.....	B92			113037.....	B240
		A7103.4.....	2R/3VX800(4)	A7103.4.....	2R/3VX800(4)			113039.....	B300
		A71035.....	3V800(12)	A71035.....	3V800(12)			113040.....	B349
		A71051.....	5VX600(2)	A71051.....	5VX600(2)			117119.....	B49
		A7105-2.....	B87(5)	A7105-2.....	B87(5)			117120.....	B55
		A71056.....	2R/5VX1060(3)	A71056.....	2R/5VX1060(3)			117121.....	B57
		S444.....	B57	S444.....	B57			121144.....	A53
		7765.....	C55	7765.....	C55			121764.....	C57
								121960.....	C70(2)
								121961.....	C70(2)

AG EQUIPMENT & PUMP BELTING PART NUMBERS

NOTE: FHP Belt may be upgraded to the MXV Belt, however the FHP Belt SHOULD NOT be substituted for the MXV Belt
Alphabetical sequence by manufacturer

OEM #	Belt No.	OEM #	Belt No.	OEM #	Belt No.	OEM #	Belt No.	OEM #	Belt No.
FORD/NEW HOLLAND									
124090	B71	168141	C153	230038	SPA1060	259347	3V425	427455	SPA1732
126570	B105(5)	168371	B124	230039	SPA1307	259348	3V475	427456	B83
126805	A33	168524	B173	230041	B38	259477	B65	431784	SPB2840
126866	A42	168618	C105	230042	B39	263765	B99(2)	432642	SPA1632
127831	C90	168772	B68	230043	B55	263766	B99(2)	433639	B60
127934	C73	168773	B68(3)	230044	B70	265402	A54	433746	B180
129149	C164	168774	B142	230045	B75	266319	B80(5)	434046	C110
129696	C90	168791	B45	230046	B83	266322	B80	437033	C77
130224	A36	168891	B117(6)	230048	B115	269973	B97	439495	A138
131725	C99	168892	B117(6)	230049	B153	271471	C259	439496	A99
132888	C274	168894	B135(6)	230050	B158	273037	5V500	447041	C87
132995	C65	169122	B59	230051	C47	274224	SPB2500(4)	448794	C156
133028	C83	169134	B51	230052	C49	283105	C114	449380	SPZ1625
133099	B45	169551	B76	230053	C60	283659	B101(3)	513220	3VX900(2)
133875	B112(2)	169582	C150	230054	C65	284062	C57	516712	3V425
133929	A41	170203	BB68	230056	C77	284063	C90	516713	3V375
134034	B131(5)	170395	C102	230057	C89	285236	B97(2)	516776	B128
136233	AX34	170878	B69	230059	C108	287499	A103	523946	B140
137390	A44(4)	170879	B49	230060	C118	302793	C136	525351	3V355
137695	C107	171149	B115	230061	C136	309364	C74	529944	B144
137945	A49	171680	B56	230062	C159	320059	C109	570221	C88
137950	C147	171681	B82	230063	C180	320883	BB103	571895	A91(3)
139366	3L330	171885	B62	230064	C187	321528	C83	571924	A91(3)
139642	B130(5)	171886	B61	230065	C220	321582	C130	571927	A36(2)
139931	A44	172198	B81	230066	C255	322686	C143	571928	A36
140022	C51(2)	172930	B87	230068	C300	323037	B162	573957	A54
140247	B83	174297	C115	230069	C328	323318	C101	576712	5VX500(2)
140872	B66	174718	A33(2)	230070	C347	323413	C75	576772	B67(2)
141063	C78	178486	B112(6)	230071	C417	323661	C72	576773	B67(2)
141954	B68	179148	B112(4)	230073	C128	323904	CC164	576774	A45(2)
142643	B57	179878	C66(2)	230074	C144	324632	C105	576776	A52
142889	B50	179944	B115	230108	B114	326298	C63	577900	C73
142967	B85	179945	B115(6)	230127	SPA1332	327024	SPZ1287	578073	A70
142976	B86	179946	B133(6)	230128	B205	327041	SPZ1060	578206	B167
144795	B116	181068	C108	230131	SPA1060	327062	SPA1180	578897	C51
144796	B141	181450	A105	230143	B195	328821	MXV4-830	579363	B80(3)
144797	B66	182315	C120(2)	230151	B51	330204	B67	579364	C60(2)
144798	B66(3)	182381	B96(2)	230154	B124	330715	C140	592789	A55
145114	B48	183406	C83	230156	B135	331019	B200	593325	B162
146141	B53	184212	B95(2)	230164	C96	333255	C170	595717	B40
146619	C140	184213	B95(5)	230168	C158	333347	CC138	604805	C112(2)
146620	B49	184243	A61(2)	230180	B112	333958	C133	605529	B144
147094	A56(2)	186347	C100	230267	C282	335258	B55(2)	605578	C224
147849	C45	195093	B114(4)	231230	B188	336386	SPZ1337	605580	C255
148083	A51	198684	B71	234591	3VX450(2)	336426	SPZ1337	605652	C103(2)
159837	B96	213105	C65(4)	234658	3VX355	336610	C141	605654	C60(2)
160036	B108	213783	A57	235084	3L280	337415	C98	605656	C162
160037	B133	213819	A72	238380	B105(2)	338921	C154	605666	C283
160038	B152	213890	A75	238895	A29(2)	350245	B140	605988	C120(2)
160039	B162	214252	C83	239103	B57(2)	350312	C79	610678	A48
160041	B81	214778	3V375	239104	B56(2)	353584	C145	610767	AX64
160044	B55	215249	C90	239140	B57(2)	354338	A33	612305	A66
162213	B81	215619	A34	240831	C136	356913	C64	613568	A49(3)
162248	B76	215620	A57	240859	B65	362141	B235	614040	C158
162353	B120	216501	C66	242028	C128	362500	B142	615790	A70
162547	B136	217187	B130	242029	C110	375977	D130	618040	B225
163041	B114(6)	217198	B96	242307	B61(3)	377164	B190	619748	C113
163152	C72	218690	A130	242464	A97	378672	CC158	620944	5V710(2)
163437	C150	219133	A41	242691	B105(3)	378989	B67	621104	C73
163640	B111(2)	219349	3V315	242999	C122	381143	B110	621367	C116(2)
164437	B50	219435	A50	243210	B87	381237	SPA1400	621638	C115(2)
164556	BB96	219690	B124	244025	B62	381489	A110	621824	5V1600P/4
164706	B71(2)	220377	C53	244675	B104(4)	386155	SPZ1147	624650	B75(2)
164952	C111	221458	B133(2)	244936	A29	387469	C128	625449	C73(2)
165073	B55	221636	C81	246727	B186	387931	B75	625853	C73
165276	B128	224354	A28	246771	A68	389245	B73	626654	A53(2)
165327	B71(2)	224571	A64	246773	C73	393519	SPA1607	626655	A57(2)
165419	C81	225915	C79	246980	D162	394426	B154	627561	B75(2)
165421	B60	226487	B106	247782	C108	395955	C65	632679	5V800/4
166203	B67	226488	B106(4)	248133	A38	396750	C75	632679	5V800/3
166345	A46	227247	C78	248332	B65(2)	399058	SPA1767	632890	5V800
166479	B58	228366	A27	248452	B94(2)	410896	C73	633512	B101
166808	B111	229163	B67(2)	253314	3VX250	421173	SPA1282	634564	B92
167537	B162	229543	B144	255603	3V400(2)	422441	A106	635042	C120(3)
168106	B158	230037	SPA1082	259325	2R/3VX450P	422731	C126	638337	5V1600/5

CROSS-REFERENCE - AG EQUIPMENT

AG EQUIPMENT & PUMP BELT PART NUMBERS

NOTE: FHP Belt may be upgraded to the MXV Belt, however the FHP Belt SHOULD NOT be substituted for the MXV Belt

Alphabetical sequence by manufacturer

OEM #	Belt No.	OEM #	Belt No.	OEM #	Belt No.	OEM #	Belt No.	OEM #	Belt No.
FORD/NEW HOLLAND		FORD/NEW HOLLAND		FREEMAN & SONS		GEHL CO. (OWATONNA)		GEHL CO. (OWATONNA)	
640622.....	B70(2)	86517679.....	MXV5-900	F0007535.....	CX105	2032208.....	C105	126965DF.....	C102
642920.....	5V1600P/4	86517915.....	C110	F7000.....	D164	2032211.....	A35	13 E 13.....	3VX850
643339.....	B128(2)	137014960.....	B66	FRICK		2032215.....	C90	13 E 13A.....	3VX850/8
643353.....	B144(2)	247428A1.....	C103	W19054.....	C124	7540348.....	A51	13 E 670.....	3V900(8)
643574.....	B43(3)	328826(A).....	A76	W19055.....	B162	13 F 8.....	C96	13 F 27.....	C105
644733.....	B101(3)	FORMALLO		FRIGGSTAD MFG.		13H130.....	B83(6)	GILMORE - TATGE MFG.	
649035.....	5V1600/6	17F188.....	B63	1261002.....	A46	13H13A.....	3V900(8)	4216123.....	B81
649108.....	B103(3)	FOSTER		G.T. SALES & MFG.		16E2000.....	B60	4216124.....	B88
680345.....	A88(2)	10850.....	A85	XD22620.....	C195	17H2570.....	3VX500	42110100.....	B68
689933.....	A46(2)	20660.....	B66(2)	XD52620.....	C255	17H257C.....	A85	42210144.....	B51
691507.....	A77(2)	20710.....	B71	GEHL CO. (OWATONNA)		17H257A.....	A90	42510045.....	B60
696719.....	A33	21200.....	B120	5875.....	A54	17H366.....	B71	FAN.....	B120
697484.....	C120(2)	21640.....	B166	40047.....	B53	17H3660.....	B71	B112.....	B112
699351.....	C77(2)	30900.....	C90	40087.....	B93(8)	3E1340.....	A81	B173.....	B173
703274.....	A46(2)	32700.....	C270	40210.....	B71	3E134A.....	A96	B55.....	B55(2)
703747.....	C92	33000.....	C300	40875.....	B72(8)	5E75.....	B53	D22270.....	B128(2)
705807.....	B90(2)	33150.....	C315	42781.....	B98(6)	5E750.....	B53	D2261.....	C240
705808.....	B90	33300.....	C330	47622.....	B66	5H75.....	A54	D22620.....	C195
708178.....	B102(3)	34200.....	C420	47623.....	B68	6H125.....	B51	D52270.....	B144
708712.....	A52(2)	B51.....	B51(2)	48183.....	3V670(2)	6H1250.....	B51	D52271.....	B148
709414.....	B97	B58.....	B58(2)	52130.....	A65	7H120.....	B42	D52620.....	C255
709997.....	B80(2)	B64.....	B64(2)	52132.....	A63	9H184A.....	B100	DRIVE.....	B195
709998.....	B80(2)	B88.....	B88	52384.....	A58	9H2422B.....	B46	GT2066B.....	B97
710714.....	B80	C112.....	C112	53673.....	C66	9H242A.....	B49	GT2067.....	B225
710754.....	C51	FOX BRADY (KOEHRING)		55297.....	C153	9H242B.....	B79	GT2087.....	B195
713281.....	B109	1019.....	C78	62127.....	3VX315	9H325.....	1930V425	GT4216125.....	B85
716254.....	BB45	25012.....	C79(2)	64547.....	3VX400	B11241.....	A26	GT4216164.....	B158
716258.....	B62	25084.....	B51	67516.....	C54	C14075.....	3V710(2)	GT4216563.....	B93
716413.....	C118	25087.....	A56(2)	67713.....	3R/3VX425	C14075A.....	3VX670(2)	GT4218123.....	B90
716414.....	C118(3)	25151.....	C73(2)	74622.....	B66	C14105.....	3V710(5)	GT42510051.....	B55
716415.....	C92	25168.....	C81(2)	77972.....	B59(2)	H6060.....	C120(2)	GT4256045.....	B46
716416.....	C92(3)	51600011.....	BX58	205467.....	C112	H6060A.....	D120	GT4258045.....	B48
717075.....	C113	51600012.....	AX59(4)	304023.....	A45	H6060B.....	D128	GT4266015GT.....	B58
719923.....	5V800(2)	51600019.....	C83	304211.....	B81	H6060C.....	D144	GT5267.....	B105
740323.....	C187	51610015.....	A57	304215.....	A29	H6060D.....	D158	GT5286.....	B144
753053.....	C131	51610016.....	A44	304303.....	C144	H6060E.....	C128	GT52860.....	B112
781479.....	C78	51612003.....	B48(3)	304304.....	C162	H6060G.....	C145	GTD52282.....	B108
786310.....	B105(4)	51612005.....	B58	600264.....	3R/3V630	H6060H.....	C140(4)	GTD52552.....	B105
788803.....	5V1600P/4	51612020.....	B64	2010240.....	C59	H6060J.....	C152(4)	K22620.....	C180
791479.....	C78	51612025.....	B32	2010242.....	A38	H6060K.....	C136	K52701.....	B75
797978.....	5V1600P/4	51612026.....	B68	2010243.....	B126	H6200F.....	C139	K59321.....	C55
797979.....	5V1700/6	51614009.....	C59	2010244.....	B140	H7600.....	C94	GLISSON	
799532.....	C75	51614010.....	C66	2010281.....	B195	H7600A.....	C78	NYTROBCTA.....	A62
835042.....	C120(3)	51616000.....	D101	2010503.....	B93	H7600B.....	C91	NYTROBCT.....	A60
849887.....	A56(2)	51616002.....	D92	2010519.....	B136	H7600D.....	B73(2)	NYTROBNI.....	A38
849888.....	A56	51616006.....	D140	2011400.....	C78	H7600E.....	B93	NYTROBNM.....	A31
849889.....	A60(2)	51616009.....	D151(2)	2012079.....	3V800	H7656.....	C70(2)	NYTROBNS.....	A35
849890.....	A60	700001223.....	C115	2012080.....	3VX800	H7832.....	B66	NYTROBPI.....	A98
852123.....	C76	5M4B2A.....	B83	2012080.....	3VX800	H7850.....	B77	NYTROBUA.....	A42
852186.....	C78	5M4B2B.....	B91	2016068.....	B55	H8000A.....	C46	NYTROBUI.....	A48
913151.....	B77	B4B1.....	B85	2017025.....	3R/3V670	H8000E.....	C39	NYTROBUN.....	A43
914040.....	C158	B4B2.....	B49	2017641.....	C68	H8035.....	C54	NYTRODCA.....	B62
923019.....	A119	B4B3.....	B51	2019500.....	C162	H8035A.....	C48	NYTODCI.....	B68
1001274.....	A63(2)	B4B5.....	B73	2021649.....	C128	H87656.....	C70	NYTODCS.....	B65
4595717.....	B40	B4B5A.....	B71	2028263.....	B105	H87656A.....	C72	NYTODCT.....	B60
7501214.....	C53	B4B5B.....	B75	2029726.....	A51	M12072C.....	B35	NYTODIM.....	B81
7855729.....	MXV4-800	B4B5HM.....	B73	2030165.....	B67	M12072D.....	B38	NYTODIN.....	B83
9501182.....	SPA1457	B4B6.....	B60	2031847.....	3V600/4	M12115.....	B85	NYTODIS.....	B85
9506748.....	SPA850	C4B1A.....	C124	2032170.....	3VX560/6	M12115A.....	B86	NYTODMAI.....	B128
9508557.....	SPA1432	F4B4A.....	D140	2032173.....	C144	M12243A.....	B86	NYTODMAT.....	B120
9512971.....	C65	F4B3.....	D128	2032177.....	B35	R13115.....	D79	NYTODMCA.....	B162
9513984.....	C100	F4B4.....	D101	2032182.....	C144	R13115B.....	C72	NYTODMRN.....	B173
9600753.....	BB95	SPF4B10.....	A55	2032183.....	A40	R13115C.....	C77(2)	NYTODMSI.....	B157
9601395.....	C112	SPF4B12.....	B58	2032193.....	B300	R13251A.....	C71(2)	NYTODMTS.....	B105
9601699.....	BX89(3)	SPF4B2A.....	5VX1400	2032201.....	A40	R13251B.....	C77(2)	NYTODMUX.....	B144
9609607.....	B59	WB4B1.....	A54	2032202.....	B120	R15054.....	B42	NYTODMXA.....	B112
9622032.....	C106					S16034.....	B105(2)	NYTODPN.....	B93
9802891.....	A63(2)					60108.....	MXV5-830(3)	NYTODPR.....	B97
9804665.....	A63					61804.....	C145	NYTODPT.....	B90
9818115.....	A28					10 E 100.....	B81	NYTODRI.....	B78
59051790.....	C173								
86503087.....	D188								
86514163.....	5V1730/6								
86514529.....	B101								
86516668.....	C52								

CROSS-REFERENCE - AG EQUIPMENT

AG EQUIPMENT & PUMP BELTING PART NUMBERS

NOTE: FHP Belt may be upgraded to the MXV Belt, however the FHP Belt SHOULD NOT be substituted for the MXV Belt
Alphabetical sequence by manufacturer

CROSS-REFERENCE - AG EQUIPMENT

OEM #	Belt No.	OEM #	Belt No.	OEM #	Belt No.	OEM #	Belt No.	OEM #	Belt No.
GLISSON		HAMACHEK		HESSTON		HESSTON		HESSTON	
NYTRODRS.....	B75	90920.....	5VX1000	55194.....	BB112	56630.....	5V2360	855031.....	C73
NYTRODSC.....	B56	90954.....	BB120	55210.....	B120	56648.....	C173	855049.....	C131
NYTRODSM.....	B51	90956.....	B46	55224.....	B133	56655.....	C162	855056.....	C76
NYTRODST.....	B50	HAMMERSMITH		55236.....	B128	56663.....	C285	855064.....	C65
NYTRODSX.....	B55	H158.....		55244.....	B133	56671.....	C228	855072.....	D285
NYTRODUA.....	B42	C158		55269.....	B136	56681.....	C285	855080.....	C188
NYTRODUI.....	B48	R.A. HANSON		55277.....	B136	56705.....	B168	855106.....	C98
NYTROEMAI.....	C128	HAN1220.....		55293.....	B144(2)	56713.....	B192	855239.....	B1750
NYTROEMPS.....	C195	D122(2)		55297.....	C153	56770.....	B81	855247.....	B41
NYTROEMRN.....	C173	HARNISCHFEGER		55301.....	BB144	56788.....	C229	855254.....	C57
NYTROEMSI.....	C158	7Z292D13.....		55319.....	B148	56796.....	C360	855320.....	B43
NYTROEMST.....	C149	B46(2)		55335.....	B158	56798.....	C225	855346.....	C55
NYTROEMXA.....	C112	HARRIS HARVESTER		55350.....	BB158	56804.....	C69	855379.....	BB85
NYTROEMXI.....	C118	75392.....		55368.....	B162	56812.....	CC158(2)	855395.....	A58
NYTROEPC.....	C96	75650.....		55400.....	B169	56838.....	B124	855403.....	C109
NYTROFPN.....	B93	75650.....		55418.....	B173	56853.....	B90	855409.....	C131
GOOSSEN INDUSTRIES		75653.....		55426.....	B180	56895.....	C177	855577.....	C158
GB223.....	3R/3VX315	75622.....		55434.....	B180	56911.....	C90(2)	855601.....	C156
PB123.....	3VX450	76622.....		55442.....	MXV4-580	56945.....	CC96	855619.....	A26
PT311.....	A120	76623.....		55467.....	B218	56978.....	C215	855627.....	B46
GRAVES		78057.....		55475.....	B205	56986.....	C128	855643.....	CC224
S1037.....	B180	79648.....		55541.....	C53	56994.....	C72	855650.....	B73
GREEN ISLE		79718.....		55558.....	C75	57026.....	C60	855726.....	C113
HM1058.....	B55	82875.....		55566.....	CC81	57034.....	B60	855767.....	C183
HM1058.....	B62	B210		55574.....	C96	57141.....	C83	855791.....	C188
GRIDER		B210		55582.....	CC112	57158.....	BB105	855833.....	B42(2)
1227.....	MXV4-420	BB128		55590.....	C120	57166.....	C63	855866.....	C85
2427.....	BB75	7694998.....		55608.....	C136	57174.....	C80	855874.....	B46
G.H. GRIMM		W76624N.....		55616.....	C144	57216.....	B72	855916.....	A96
GT167D.....	D195	C162(2)		55624.....	C146	57273.....	A55	855932.....	B72
GT168CC.....	C147	B85		55632.....	C149	57307.....	B170	856021.....	B58
GT45.....	C75	B42		55640.....	C153	57323.....	C255	856039.....	A89
GROVE MFG.		B42		55657.....	C158	57349.....	C330	856054.....	A106
14261.....	B80	B153		55665.....	C162	57364.....	B98	856088.....	C144
HABAN MFG.		9810190.....		55673.....	C162	57398.....	B109	856120.....	B54
5191.....	B52	D98		55681.....	C175	57448.....	C77	856138.....	B65
11361.....	MXV4-760	HAYBUSTER		55699.....	C173	57455.....	C59	856146.....	C99
12611.....	B34	1600052.....		55707.....	C177	57471.....	C103	856161.....	B107
15562.....	BX112	BB107		55715.....	C180	57497.....	C188	856187.....	C154
S369.....	B40	HCC CORP.		55723.....	C180	57513.....	CC154	856195.....	B50
S370.....	B52	239169.....		55731.....	C197	57554.....	C144	856294.....	C98
S371.....	B54	C120		55749.....	C195	57562.....	B94(2)	856310.....	C116
S429.....	B48	HEATH		55764.....	C204	57596.....	C78	856369.....	C177
S449.....	B46	80010.....		55772.....	C210	57604.....	C46	856385.....	C101
S450.....	B78	80011.....		55780.....	C225	57661.....	B72	856401.....	C105
HABCO		80036.....		55790.....	C225	57695.....	C150	856435.....	BB300
DR103.....	B103	B255		55798.....	C240	57703.....	C87	856476.....	C70
DR124.....	DR124	CC240		55804.....	C86	57711.....	C113	856492.....	B52
HAHN INC.		825003.....		55806.....	C255	57749.....	C345	856500.....	C124
26863.....	A40	HENKE MACHINE		55822.....	C270	57752.....	B75(2)	856542.....	B44
27030.....	A38	BB60.....		55830.....	C313	57786.....	C131	856559.....	C90
28440.....	3VX425	BB60		55848.....	C320	57794.....	C173	856625.....	C190
94779.....	3VX530	BB60		55855.....	C330	57810.....	C140	856633.....	C118
308280.....	3VX280	BB60		55863.....	C345	57836.....	B69	856641.....	C98(3)
2C6658.....	B35	HENRY INDUSTRIES		55871.....	C360	57844.....	C81	856732.....	B74
2F5582.....	A75	H60085.....		55889.....	C390	57851.....	C158	856757.....	A95
4C8191.....	A62	B85		56028.....	B57	57893.....	C107	856831.....	C120
HAMACHEK		H60162.....		56036.....	B77	65218.....	B69	856849.....	A46
90901.....	B105	C162		56044.....	B83	69704.....	B81(2)	856872.....	B60(2)
90902.....	5V1600	C180		56085.....	B146	117638.....	A25	857193.....	B120
90918.....	3VX630	HESSTON		56127.....	B185	261149.....	C75(2)	857219.....	C128
7780.....		7780.....		56184.....	C78	261461.....	C72(2)	857243.....	C295
55004.....		C255		56192.....	B53	262600.....	CC158(2)	857250.....	3VX375
55046.....		A46		56226.....	C81	264069.....	5VX850(2)	857276.....	3VX800(2)
55046.....		B38		56234.....	5V2240	272633.....	C83(3)	857287.....	C375
55061.....		B55		56242.....	B97	285320.....	A55(2)	857326.....	5VX850
55087.....		BB68		56259.....	C136	316620.....	B69	857359.....	B92
55103.....		B69(3)		56325.....	C75	324616.....	B63(3)	857367.....	5V1000
55111.....		B71		56333.....	CC112	335687.....	B72(2)	857375.....	B39
55129.....		B78		56408.....	A46	413070.....	BX55(2)	857383.....	B35
55137.....		B79		56424.....	B83	486274.....	B94(2)	857417.....	MXV5-108
55145.....		B82		56465.....	B180	566068.....	C144	857482.....	C-112
55152.....		B83		56549.....	C60	785513.....	A52	857516.....	C112
55160.....		B87		56564.....	C162	785521.....	B61	857581.....	A50
55178.....		B105		56580.....	C162	828004.....	A51(2)	857664.....	B81
55194.....		B105		56606.....	C144	855007.....	C149	857672.....	B83

AG EQUIPMENT & PUMP BELTING PART NUMBERS

NOTE: FHP Belt may be upgraded to the MXV Belt, however the FHP Belt SHOULD NOT be substituted for the MXV Belt
Alphabetical sequence by manufacturer

CROSS-REFERENCE - AG EQUIPMENT

OEM #	Belt No.	OEM #	Belt No.	OEM #	Belt No.	OEM #	Belt No.	OEM #	Belt No.
JOHN DEERE		JOHN DEERE		JOHN DEERE		JOHN DEERE		JOHN DEERE	
AN150062.....	3V475(2)	E20254.....	C67	H125381.....	C171	H31328.....	C52	J15342(HN).....	A46
AN15112.....	B68(3)	E30472.....	D82	H128010.....	C188	H31329.....	BB68	J16464.....	B51
AN15113.....	B81(2)	E30481.....	D125	H128234.....	B217	H31330.....	A42	J17878(N).....	B75
AN15234.....	5V1250(2)	E30724.....	C67	H131169.....	C255	H32099.....	C198	J18038(N)(N-HD).....	B67
AN190948.....	C77(2)	E31690.....	C54	H132808.....	B53	H32118.....	C144	J18470.....	C128(2)
AN194750.....	B92	E33446.....	C57	H134437.....	XPA1457	H32801.....	C44	J18477.....	B78
AN194751.....	B92	E36784.....	C63	H135380.....	C184	H32802.....	C58	J18796(N).....	B73
AN194916.....	C93	E37644.....	C126	H135458.....	C313	H33142H.....	D85	J19214(C).....	B75
AN194917.....	C97	E37905.....	C94	H136881.....	C124	H33314H.....	D105(2)	J19497C.....	B75
AN30712.....	C112(2)	E38125.....	C87	H136963.....	C120	H33473.....	C152	J20475(N).....	B54
AN30712N.....	C112	E38587.....	C163	H137830.....	C313	H34740.....	C114	J20918.....	B103
AN30713.....	C108(2)	E39041.....	C107	E39041.....	C107	H34944.....	D173	J9836H.....	A90
AN30719.....	C115	E39166.....	C93	H138761.....	C128	H35434.....	C77	L1047C.....	C136
AN30720.....	C110	E39525.....	B62	H138762.....	C131	H35666.....	C206	L1048C.....	B85
AN30759.....	C80	E39526.....	C126	H140160.....	D169	H35680H.....	D144	L1051C.....	A60(2)
AN30760.....	C81	E39612.....	A112(2)	H141166.....	C321	H62164.....	D88	L1111C.....	B51
AN30761.....	C106	E39661.....	C116	H141167.....	C320	H62258.....	C69	L1123C.....	C129
AN30761N.....	C106(2)	E39739.....	C54	H146636.....	MXV4-400	H62990.....	A41	L1151C.....	A68
AN30762.....	C108(2)	E39792.....	A47	H146637.....	MXV4-410	H63010EB.....	C130	L1199C.....	A90
AN30763.....	C103	E40574.....	C112	H151952.....	D164	H63370.....	C161	L1266C.....	B68
AN30908.....	C89	E40625.....	C117	H160171.....	C322	H63478.....	C101	L1293C.....	C157
AN31374.....	C103(2)	E4304E.....	B78	H20406.....	CC118	H63938.....	B62	L1293C.....	C158
AN31375.....	C114	E43565.....	C152	H20407.....	C113	H63939.....	B64	L1305C.....	B75
AN32762N.....	C90(2)	E4373E.....	B57	H21233.....	C203	H64045.....	B128	L1309C(W).....	A85
AN33240.....	A36(2)	E4461E.....	B87	H21666.....	B62	H64483.....	C158	L1319C.....	B158
AN33240N.....	A36	E46113.....	C83	H21884.....	B162	H64484.....	C169	L1323C.....	B105
AP24777.....	A44(2)	E46806.....	C60	H21925H.....	C124	H64834.....	D133	L1328C.....	B112
AP26684.....	A35(2)	E46844.....	C49	H21929.....	B91	H65121.....	3L310	L1329C.....	B120
AP26684H.....	A35(2)	E46847.....	C106	H21929H.....	B92	H65434.....	C75	L1352C.....	C51
AR29285.....	A40	E48062.....	C87	H22195H.....	C124	H76028.....	D128	L1353C.....	B68
AR43648.....	A53	E48310.....	B80(3)	H22529H.....	B120	H76136.....	C57	L1473C.....	C51
AR53099.....	B62(2)	E50237.....	C104	H23178.....	B87	H76150.....	C61	L1474CH.....	C58
AR93009.....	B56	E50924.....	C195	H23190.....	B85	H77010.....	C175	L1611C.....	C128
AT11535.....	3V280	E51284.....	B108(2)	H23373.....	C60	H77291.....	C78(3)	L1711C.....	B78
AT28030.....	SPZ1212(2)	E51727.....	C57	H23725.....	B37	H77331.....	C134	L1714C.....	A37
AT30181.....	B57	E51728.....	C54	H23766.....	C70	H77765.....	D151	L1723C.....	B90
AT51740.....	B55	E52179.....	C59	H23770.....	C92	H77766.....	C153	L1884C.....	B75
AT59850.....	A60	E52638.....	C51	H23771.....	C117	H78648.....	C106	L1887C.....	B34
AW10254.....	C84	E52646.....	C98	H23817.....	C89	H79073.....	C100	L1888C.....	B136
AX40190.....	AX35	E53108.....	C119	H23927.....	D122	H79236.....	SPA1600	L1894C.....	B82
AZ12856.....	C61(2)	E53936.....	A67	H23928.....	D146	H79237.....	A63	L1899C.....	B59
AZ22534.....	B57	E54089.....	B108(2)	H23950.....	C119	H79285.....	B136	L2217C.....	B48
AZ42064.....	C50	E54541.....	A74	H24457.....	B36	H79787.....	C210	L2218C.....	B54
AZ51087.....	C50	E55171.....	C199(3)	H24472.....	B96	H79788.....	C131	L2366N.....	C103
B13907.....	A52	E55668.....	C90	H24473.....	B46	H79789.....	C225	L3146N.....	B50
B14482.....	3L280	E58483.....	C107	H24650.....	C128	H79795.....	C184	L3700N.....	C114
B14826.....	B72	E58548.....	C131	H25493.....	C55	H79917.....	C108	L4276N.....	V83
B14852.....	3L270	E60212.....	C100	H25641.....	C156	H80103.....	C131	L4277N.....	C85(2)
B17267B.....	A55	E60597.....	A56	H25642H.....	B97	H80159.....	B110	L4319N.....	C77
B27635.....	A31	E60598.....	A68	H25647.....	C99	H80632.....	C58	L4339N.....	C93
B28170.....	400J8	E61326.....	B50	H25990.....	3V375	H81222.....	C148	L4490N.....	C78
C11078.....	C90	E61749.....	A64	H26082.....	CC146	H81378.....	A49	L4491N.....	C86
C11088.....	B47	E63031.....	C108	H2620H.....	B112	H81524.....	C111	L4512N.....	C84
C11508.....	C141	E63036.....	C92	H26858.....	B142	H81653.....	C245	M139116.....	1922V554
C12831.....	3V500	E63957.....	C175	H26858H.....	B144	H81975.....	B89(2)	M40013M.....	A35
C17334.....	B99	E69424.....	C66	H27109.....	B60	H82311.....	A74	M40014M.....	A66
C3471E.....	C45	E69644.....	A58	H27351.....	B117	H82318.....	A70	M40222M.....	A26
C457D.....	B75	E69645.....	A70	H27387.....	C70	H83715.....	C128	M40223M.....	A85
C458D.....	B65	E70357.....	C138	H27433.....	C86	H86039.....	A68	M40224M.....	A55
C493D.....	A46	E70675.....	C54	H27568H.....	B64	H86060.....	A70	M40757M.....	A75
CA20514.....	SPA1107	E72331.....	C94	H27955H.....	B51	H86061.....	A74	M41140.....	B123
CA20518.....	B44	E78287.....	A40	H28671.....	CC116	H87256.....	C128	M41244.....	A51
CA22534.....	B57	F13511.....	C214	H28687.....	C72	H87648.....	C106	M41592.....	MXV4-400
CC18089.....	C61	FT427YW.....	A36	H28770.....	A39(2)	H87648.....	C149	M41642.....	MXV4-620
E10801.....	C88	G6876E.....	C122	H29528H.....	B44	H92080.....	C274	M41668.....	MXV4-980
E11623.....	C89	GG02032178.....	B53	H29955.....	B51	H92136.....	C131	M1672.....	A60
E11837.....	C80	H101352.....	A64	H30735.....	D139	H94254.....	B133	M1960.....	MXV4-1020
E12574(E).....	C66	H101436.....	C132	H31088.....	B58	H96414.....	C68	M42261.....	A58
E14150.....	C64	H101469.....	C73	H31227H.....	B177	H97929.....	D186		
E14507(E).....	C55	H103344.....	C274	H31228.....	B201				
E16774.....	C85	H110300.....	C150	H31267.....	B146				
E17465.....	C105	H111519.....	D158	H31267H.....	B144				
E17844.....	C73	H112421.....	B133	H31289.....	B153				
		H118730.....	C128	H31289H.....	B152				
		H125380.....	C184						

AG EQUIPMENT & PUMP BELT PART NUMBERS

NOTE: FHP Belt may be upgraded to the MXV Belt, however the FHP Belt SHOULD NOT be substituted for the MXV Belt

Alphabetical sequence by manufacturer

OEM #	Belt No.	OEM #	Belt No.	OEM #	Belt No.	OEM #	Belt No.	OEM #	Belt No.
JOHN DEERE		JOHN DEERE		JOHN DEERE		JOHN DEERE		JOHN DEERE	
M42485.....	MXV4-460	N120494.....	B125	N52547.....	C89	P51165H.....	B64	Z42382.....	SPB1440
M43489.....	MXV4-570	N120715.....	B153	N7100DN.....	B84	PR1528R.....	3L200	Z42756.....	SPA1457
M43490.....	B112	N120716.....	B107	N85311.....	3V425	R29474.....	A34	Z42757.....	B55
M43569.....	MXV4-500	N120717.....	B103	P19984.....	C67	R3808N.....	B92	Z43253.....	C65
M43586.....	MXV4-680	N120718.....	B105	P24148(H).....	C210	R4677N.....	B112	Z45026.....	B76
M43795.....	MXV4-410	N120796.....	C84	P25217(H).....	C100	R4678N.....	B110	Z45369.....	SPA1107
M43820.....	MXV4-740	N120847.....	B121	P27108.....	B159	R4679N.....	B108	Z45482.....	B56
M44121.....	MXV5-670	N121113.....	C103	P27108H.....	B158	R63900.....	A40	Z46366.....	C121
M44178.....	MXV3-290	N121114.....	C98	P28905H.....	A90	R64760.....	B92	Z46759.....	SPA1082
M44272.....	MXV4-800	N121116.....	C81	P29286(H).....	B84	R69955.....	A43	Z51212.....	D89
M44483.....	MXV4-480	N121235.....	C183	P29287H.....	B93	R70446.....	B57	Z7159H.....	C43
M44498.....	MXV4-600	N121448.....	B113	P29786.....	C248	RL1328N.....	B112	Z879914.....	C51
M44750.....	3L310	N121871.....	C94	P30120.....	CC240	T12551.....	3V475	Z8800H.....	C46
M45682.....	A45	N121874.....	B147	P32058H.....	B105	T16405.....	C390	Z9281(H).....	C45
M45815.....	A25	N121875.....	B111	P32361.....	B147	T20161.....	B47	Z9333H.....	C435
M45862.....	MXV4-470	N123657.....	A88	P33316H.....	A75	T20334.....	B46	Z9367H.....	C52
M45863.....	MXV4-560	N124017.....	C167	P35021.....	B148	T23505.....	B44		
M45998.....	MXV4-830	N125041.....	C106	P35760.....	B97	T31710.....	B51		
M46758.....	MXV4-360	N12551(N).....	C115	P35760H.....	B98	U46257.....	A29		
M7765.....	MXV4-840	N125885.....	C108	P36187.....	CC147	W10389.....	C95		
M47766.....	MXV4-800	N128466.....	C122	P37230.....	A41	W1039.....	C96	64109.....	B108
M47770.....	MXV4-580	N128809X.....	A33	P37230H.....	A42	W10403.....	C84	64158.....	B144
M47771.....	B112	N129508.....	C169	P39388H.....	C85	W12904.....	BB112	64338.....	B90
M48444.....	BB140	N129916.....	A103	P39561H.....	B93	W14431.....	B83	64452.....	B59
M48520.....	MXV4-250	N135786X.....	B50(3)	P39562H.....	B81	W15193.....	A18	66260.....	B46
M49000.....	A62	N14014(N).....	A44	P39565H.....	B85	W25574.....	C32	66394.....	B120
M49920.....	MXV4-990	N150166.....	3V475(2)	P40017.....	C104	W30582.....	C60	66439.....	B28
M81035.....	MXV4-350	N15020.....	A49	P40023.....	C108	W36143.....	B90	67572.....	B48(3)
M81036.....	MXV4-330	N150202N.....	A64	P40278.....	C120	XH132808.....	B53		
M81037.....	MXV4-320	N15020N.....	A50	P40280.....	C47	XH132809.....	B52		
M81805.....	MXV4-490	N15079.....	D85	P40281(H).....	B55	Z20460.....	C126		
M81954.....	C283	N1520N.....	5VX1250(2)	P40965(H).....	B42	Z20562.....	C156		
M81976.....	C274	N15201(N).....	C60	P41480.....	CC121	Z20703.....	C118		
M82167.....	MXV4-510	N15202(N).....	A64	P41500.....	B33	Z20743.....	C83		
M82258.....	MXV5-400	N15289(N).....	B88	P41508.....	C62	Z21137.....	A41		
M82362.....	A85	N15315.....	A54	P41603.....	C106	Z21171.....	A49		
M82460.....	MXV4-660	N15315N.....	A55	P41603H.....	C105	Z21254.....	A53		
M82461.....	MXV4-390	N153524.....	400J12	P42126.....	CC120	Z21398.....	C68		
M82538.....	A61	N15354.....	C67	P42182(H).....	B113	Z21400.....	C69	4022.....	A62
M82612.....	MXV4-360	N154241.....	320J12	P42817.....	C83	Z22208.....	SPA1257	4023.....	A45
M82719.....	MXV4-490	N15432.....	C321	P42877.....	D85	Z22832.....	B178	4027.....	A39
M82720.....	MXV4-450	N15437.....	A58	P43202H.....	B42	Z23086.....	C322	4028.....	A59
M82734.....	MXV4-600	N15527(N).....	A58	P43323.....	B58	Z23087.....	C78	4029.....	A96
M82768.....	A117	N15528.....	B68(3)	P43532.....	C52	Z23087.....	C78	4202.....	B112
M83556.....	C183	N15697(N).....	A60	P43794.....	C90	Z23376.....	C105	4203.....	B91
M83837.....	MXV4-880	N157368.....	400J10	P44774.....	B187	Z23693.....	C124	4204.....	B81
M84075.....	MXV4-790	N15898.....	B158	P45928.....	C183	Z23752.....	A35	4207.....	B103
M84136.....	MXV4-1010	N1677.....	C85	P461H.....	A90	Z24833.....	A57	4215.....	A29
M84223.....	MXV4-620	N170856.....	C94	P46343.....	A76	Z25473.....	C67	4216.....	B140
M84505.....	B148	N220907.....	B76	P46676.....	B47	Z25670.....	D166	4303.....	C144
M85442.....	MXV4-440	N221266.....	A108	P46873.....	D140	Z26628.....	C71	4304.....	C162
M86060.....	MXV4-430	N221414.....	B95	P47192.....	CC126	Z26888.....	C106		
M86248.....	A101	N30429N.....	C125	P47304.....	B41	Z28458.....	C84		
M86421.....	MXV4-530	N30716.....	C138	P47397(H).....	B79	Z28842.....	D164		
M86422.....	MXV4-630	N30716N.....	C140	P47885.....	C109	Z30130.....	D150	3053015.....	C152
M87373.....	CC150	N31193.....	D92	P47962.....	CC137	Z30920.....	B172	3053031.....	C68
MSB606Z.....	B53	N31233(N).....	C75	P47962H.....	CC136	Z31816.....	C128	3053034.....	C158(2)
N10068(N).....	B60	N31419(N).....	C90	P47982.....	C84	Z32041.....	B187	3053035.....	C180(2)
N101027.....	D95	N31437.....	C87	P48083.....	B42	Z32158.....	B150	3053038.....	C100
N10179.....	A41	N31708(N).....	B53	P48084.....	C64	Z32883.....	A109	32053003.....	B87
N10192(N).....	B68	N31877.....	D92	P49204.....	C59	Z33368.....	C88	33053021.....	B60
N107439.....	C100	N32248.....	B55	P49205.....	CC107	Z33605.....	A114	33053023.....	C144
N110051.....	C126	N32249(N).....	B66	P49414.....	C133	Z33774.....	B175	33053051.....	B136
N110084.....	C72	N33314.....	C73	P49415.....	C94	Z34405.....	C116	3A53003.....	C144
N110085.....	C128	N33746.....	B82	P49416.....	B41	Z34828.....	SPB1400	3A53015.....	C152(2)
N11057.....	B83	N34820.....	D104	P49570.....	B38	Z35356.....	C153	3A53031.....	C68
N11057N.....	B85	N34821.....	D95	P49603.....	B49	Z35965.....	A106	3A53034.....	C158(2)
N11117(N).....	A72	N34881N.....	A36(2)	P49603H.....	B50	Z36949.....	D188	3A53038.....	C100
N111527.....	C69	N35158.....	C72	P49604.....	B92	Z38148.....	SPA1120		
N114301.....	B43	N51225(N).....	B35	P49729.....	B42	Z38149.....	SPA1400		
N115368.....	B45	N51289(N).....	B88	P49938.....	B80	Z38698.....	C90		
N11602.....	A40	N51290.....	B91	P49938H.....	B81	Z38702.....	SPA1232		
N117398.....	B46	N51461.....	B84	P50335.....	C129	Z38703.....	SPA1320		
N120086.....	C87	N52188.....	B86	P50471H.....	3V450	Z38704.....	A87		
N120087.....	C80			P50749.....	B74	Z41889.....	SPA1457		
N120289.....	B117			P51164H.....	A35(2)	Z41932.....	B58		

JOHNSON FARM

64109.....	B108
64158.....	B144
64338.....	B90
64452.....	B59
66260.....	B46
66394.....	B120
66439.....	B28
67572.....	B48(3)

K B H

K132.....	C156
-----------	------

KASTEN

7153.....	C75(2)
-----------	--------

KEITH INDUSTRIES

4022.....	A62
4023.....	A45
4027.....	A39
4028.....	A59
4029.....	A96
4202.....	B112
4203.....	B91
4204.....	B81
4207.....	B103
4215.....	A29
4216.....	B140
4303.....	C144
4304.....	C162

KELLEY MFG.

3053015.....	C152
3053031.....	C68
3053034.....	C158(2)
3053035.....	C180(2)
3053038.....	C100
32053003.....	B87
33053021.....	B60
33053023.....	C144
33053051.....	B136
3A53003.....	C144
3A53015.....	C152(2)
3A53031.....	C68
3A53034.....	C158(2)
3A53038.....	C100

KELLY RYAN

22C99.....	C97
M23C.....	B61

KENT MFG.

78B.....	B78
B144.....	B144(2)

AG EQUIPMENT & PUMP BELTING PART NUMBERS

NOTE: FHP Belt may be upgraded to the MXV Belt, however the FHP Belt SHOULD NOT be substituted for the MXV Belt

Alphabetical sequence by manufacturer

OEM #	Belt No.	OEM #	Belt No.	OEM #	Belt No.	OEM #	Belt No.	OEM #	Belt No.
KENT MFG.									
C51.....	C51								
C55.....	C55								
KINZE									
G1K342.....	5VX710/4								
KITSON POULTRY									
25022140.....	C210								
25022555.....	C255								
KOEHRING (FOX BRADY) (HINIKER)									
1019.....	C78								
25012.....	C79(2)								
25084.....	B51								
25097.....	A56(2)								
25151.....	C73(2)								
25168.....	C81(2)								
51600004.....	5VX710								
51600012.....	AX59(4)								
51600019.....	C83								
51610015.....	A57								
51610016.....	A44								
51610017.....	17545								
51612003.....	B48(3)								
51612005.....	B58								
51612020.....	B64								
51612025.....	B32								
51612026.....	B68								
51614009.....	C59								
51614010.....	C66								
51616006.....	D140								
700001223.....	C115								
5M4B2A.....	B83								
5M4B2B.....	B91								
B4B1.....	B85								
B4B2.....	B49								
B4B3.....	B51								
B4B5.....	B73								
B4B5A.....	B71								
B4B5B.....	B75								
B4B5HM.....	B73								
B4B6.....	B60								
C4B1A.....	C124								
F4B1A.....	D140								
F4B3.....	D128								
SPF4B10.....	A55								
SPF4B12.....	B58								
SPF4B2A.....	5VX1400								
WB4B1.....	A54								
KOSCH									
K1006.....	C78								
N1294.....	C88								
K1386.....	C92								
K1825.....	C90								
K2638.....	C72								
K2639.....	C63								
K265.....	C48								
K333.....	C60								
K3383.....	C112								
K354.....	C51								
K3600.....	C195								
K437.....	C53								
K459.....	C70								
KRONE									
0921-506-0.....	3R/5V750								
0921-523-2.....	SPB3225(4)								
KUBOTA									
7005000060.....	3VX315								
7008000246.....	A110								
7008000247.....	A81								
7008000656.....	A90(2)								
7008000740.....	A90(2)								
7008000963.....	B71								
7070634710.....	C109								
7071299180.....	B86								
7071334770.....	B81								
7072232430.....	B38(2)								
7072234710.....	B108								
70080-00828.....	B71(2)								
700-8001412.....	B81								
KUHN									
831-017-82HTS.....	SPB1590								
831-017-87.....	SPB2500(3)								
831-017-915.....	B112(4)								
KUKER									
1071A.....	A61								
1071B.....	B64								
L Aidig									
30154.....	B75(2)								
30884.....	B60(2)								
LANDPRIDE									
816-064C.....	B158								
816-101C.....	C195								
816-116C.....	B133								
816-141C.....	B175								
LENNOX									
P25562.....	B42								
LEWIS									
B144.....	B144								
B148.....	B148								
BB81.....	BB81								
BB85.....	BB85								
LILLISTON (SEE BUSHHOG)									
918.....	B144								
12727.....	B162								
12728.....	B158								
12730.....	B124								
12731.....	B100								
50183.....	B66								
150030.....	B100(4)								
150087.....	B112								
150151.....	B112								
222279.....	C115								
1150007.....	C128								
1550111.....	B148								
1550119.....	B144								
1550135.....	B56								
2750005.....	C131(2)								
3950006.....	C136								
5550010.....	C152(2)								
5650014.....	C146(2)								
6050050.....	BB107								
6050052.....	B108								
6050208.....	CC157								
6050209.....	C72								
50002705.....	C86								
50009469.....	C83								
50009471.....	C131								
50013184.....	CC155								
03-053-031.....	C72								
33-053-023.....	C147								
33-053-025.....	C109								
LILLISTON (SEE BUSHHOG)									
33-053-050.....	CC105								
33-053-071.....	CC120								
51718.....	AA85								
S2952.....	3VX250								
S2954.....	3V250								
LOCKWOOD CORP.									
4056.....	B75								
40517.....	B70								
40540.....	B48								
40558.....	B158								
40582.....	B51								
40588.....	B157								
40599.....	B42								
250772.....	C75								
347750.....	BB75(2)								
405105.....	B64								
405120.....	B78								
405125.....	B118								
405129.....	C100								
405138.....	C195								
405140.....	C230								
405144.....	B81								
405148.....	B140								
405155.....	C132								
405159.....	BB128								
405165.....	C360								
405170.....	C240								
2052772.....	C73								
2052790.....	C75								
2500445.....	B42								
2500790.....	B76								
2500977.....	B95								
2502748.....	C72								
4050005.....	B78								
4050006.....	B75								
4050030.....	B68								
4050032.....	B64(2)								
4050035.....	B112								
4050036.....	B60								
4050041.....	B55								
4050055.....	B85								
4050093.....	B97								
4050104.....	C96								
4050112.....	B173								
4050114.....	B144								
4050130.....	C115								
4050134.....	C164								
4050137.....	C185								
4050142.....	C255								
4050143.....	C270								
4050152.....	B285								
4050153.....	B92								
4050175.....	B245								
4050176.....	B255								
4050185.....	C112								
4050186.....	C144								
20521020.....	C108								
20521075.....	C103								
20521125.....	C108								
25000662.....	B64								
25000730.....	B70								
25001100.....	B108								
25001165.....	B113								
25001385.....	B136								
25001515.....	B148								
25021125.....	C109								
25021395.....	C136								
25021475.....	C144								
25021735.....	C173								
25021765.....	C173								
25021790.....	C175								
LOCKWOOD CORP.									
25021870.....	C185								
25022735.....	C270								
50901530.....	C149								
80501225.....	B120								
80501305.....	B124								
80501645.....	B162								
80501825.....	B180								
80501970.....	B195								
80971755.....	B173								
80971829.....	B180								
HBB180.....	A110								
I0250001600.....	B157								
L0040500212.....	A40								
L0040500229.....	B116								
L04050094.....	B120								
L04050136.....	C180								
L04050141.....	C244								
LA04050036.....	B60								
LONG MFG.									
6971.....	C140(2)								
8128.....	B30								
8129.....	B195								
14658.....	B173								
102868.....	MXV4-1050								
106841.....	B87								
242691.....	B105(3)								
243210.....	B87								
722264.....	B140								
723644.....	B83								
730697.....	C90								
730698.....	C128								
730699.....	C112								
730700.....	B78								
730702.....	B112								
734364.....	B56								
B83.....	B83(2)								
C08097.....	A38								
C10054.....	A43								
HM12703.....	C108								
HM12704.....	C86								
J.E. LOVE									
A20436.....	C78								
A20438.....	C83								
A20441.....	C108								
A20462.....	B54								
A20538.....	C96								
B72.....	B72								
CD1007V.....	C89								
CD1008V.....	C77								
CD1013V.....	C85								
CD1014V.....	C136								
CD1031V.....	C101								
CD1033V.....	C99								
CD1034V.....	C94								
CD1035V.....	C90								
CD1036V.....	C92								
RVC105.....	C105								
RVC134.....	C130								
RVC68.....	C68								
XCD1038V.....	C93								
LUEDKE									
203004.....	BB112								
LUNDEL									
2190L1.....	B162								
2886L1.....	B70								
2887L1.....	B78								
C180.....	C179								
MACDON									
34400.....	34400								
I14006.....	C140								
K116545.....	5VX670								
K11171.....	B87								
K11781.....	B52								
K11801.....	B64								
K11839.....	B195								
K11840.....	B49(2)								
K11853.....	A76								
K13313.....	B49								
K13641.....	B212								
K13662.....	A71								
K13701.....	B133								
K13712.....	B217								
K13721.....	B125								
K14661.....	B119								
K15068.....	B146								
K154.....	B51								
K15433.....	B92(2)								
K15652.....	B48								
K15654.....	B243								
K15655.....	BB51								
K15656.....	B237								
K15657.....	B196								
K15981.....	B246								
K15982.....	B49								
K160.....	B162								
K16664.....	B94								
K17082.....	B221								
K17555.....	B33								
K17573.....	A162								
K17838.....	B255								
K17951.....	3L490								
K18117.....	B280								
K18980.....	C60								
K19451.....	B123								
K19452.....	B137								
K19468.....	3L420								
K19979.....	B213								
K199791.....	B210								
K20045.....	A40								
K20047.....	C105								
K20104.....	B144								
K20567.....	C68								
K20568.....	C103								
K205681.....	C98								
K20701.....	C136								
K20721.....	B108								
K22004.....	B119(2)								
K220041.....	B120(2)								
K24209.....	BX54								
K24879.....	A49								
K248791.....	A55								
K26316.....	C124								
K26324.....	C123								
K26561.....	B68								
K28030.....	C108								
K28031.....	C103								
K29384.....	C113								
K29695.....	C158								
K29914.....	B75								
K29915.....	B90								
K29916.....	B32								
K29917.....	B100								
K29918.....	B158								
K29919.....	B55(2)								
K29920.....	B71								
K32360.....	B32								
K4224.....	C51								
K4226.....	B138								
K4227.....	B180								

CROSS-REFERENCE - AG EQUIPMENT

AG EQUIPMENT & PUMP BELT PART NUMBERS

NOTE: FHP Belt may be upgraded to the MXV Belt, however the FHP Belt SHOULD NOT be substituted for the MXV Belt
Alphabetical sequence by manufacturer

OEM #	Belt No.	OEM #	Belt No.	OEM #	Belt No.	OEM #	Belt No.	OEM #	Belt No.
MACDON									
K4228	B60								
K4436	C229								
K4441	A46								
K4540	C223								
K4541	C235								
K4542	B86								
K5050	B126								
K5458	B226								
K5460	B73								
K5461	B71								
K5462	B91								
K5463	B97								
K5464	B208								
K5563	B79								
K5566	B84								
K6078	B44								
K6108	B25								
K7095	B232								
K7096	B69								
K7097	B66								
K7098	B237								
K7329	B81								
K7330	B78								
K7331	B75								
K8404	B133								
K8405	B140								
K8406	B65								
K8407	B68								
K8554	B144								
K8555	B76								
K8556	B63								
K8557	B200								
K9501	B131								
K9502	C96								
K9504	A51								
K9505	C76								
K9506	A120								
K9507	B82								
K9508	B57								
K9509	B171								
K9510	B103								
K9511	A35								
K9512	B173								
K9513	C81								
K9514	A108								
K9515	A57								
K9516	C78								
K9517	C73								
K9518	A96								
K9519	A32								
K9520	B154								
K9521	C92								
K9522	B187								
K9523	B53								
K9524	B148								
K9525	A48								
K9527	A42								
K9528	B93								
K9529	B194								
K9530	C94								
K9531	B221								
MAIZE									
3003925	5VX800								
MASSEY FERGUSON									
2318	B60(2)								
3568	B70								
35274	C150								
55541	C51								
55681	C173								
252828950	B112								
"1056877M1	C109								
"541372M1	B101								
MASSEY FERGUSON									
"557292M1	C101	1052007M1	A54	195488M1	C72	228542M1	A166		
055562M1	B221	1052371M1	A35	195671M1	C90	228722M1	B51		
100261M1	A48	1052602M1	B108	195672M1	C101	228813M1	C57		
1008980M1	C144	1053399M1	C71	195899M1	C66	228813M3	C58		
1012134M1	B85	1056409M1	B105	200327M1	B97	228873M3	C57		
1012435M1	A80	1056423M1	B190	200432M1	C102	228997M1	B47		
1014342M1	B144	1056522M1	A49	200557M1	B103	228999M1	B72		
1014979M1	C188	1056732M1	A126	201900M1	C128	229096M1	B161		
1014980M1	B136	1056841M1	B68	202242M2	B63	229097M1	B89		
1014981M1	B175	1056914M1	C103	202336M1	B72	229287M1	A163		
1015003M1	B225	1071174M1	B118	202961M1	C140	229288M2	A161		
1021521M1	B40	1077008M1	B120	203052M1	B92	229627M1	B38		
1023436M1	MXV4-290	140114M1	B185(2)	203437M1	B47	230380M1	C54		
1023531M1	A50	140235M1	B199	203551M1	B104	230381M1	C52		
1023564M1	MXV4-250	140254M1	C54	204084M1	B106	232508M1	C50		
1023608M1	MXV4-290	140259M1	B57	204095M1	B118	232521M1	B94		
1024562M1	A29	140260M1	B53	204618M1	A136	233950M1	B49		
1025542M1	MXV4-500	141485M1	B144	204619M1	A119	236670M1	A54		
1025557M1	MXV4-750	141514M1	B185	205235M1	C126	240575M2	B49		
1027577M91	B60	141515M1	B210	206020M1	C106	2439700W1	C167		
1030050M1	MXV4-490	141653M1	B120	206021M1	C117	2543650W1	C120		
1030912M91	C111	141654M1	B136	206152M1	C120	2614A158	SPZ1300		
1031520M1	BB128	141883M1	A70	206191M1	C140	2614B156	SPA1332		
1032834M1	A70	141899M1	C285	206897M1	C46	2619760W1	B67		
1032843M1	MXV4-720	141943M1	B138	210075M1	C108	2624080W1	A53		
1033077M1	C128	142218M1	B146	210615M1	B91	265522M91	A67(2)		
1033078M1	C213	142416M1	B150	210627M1	B86	273757M91	B156(2)		
1033097M1	C202	142566M1	C69	210628C1	B81	274015M91	B89		
1033137M1	C331	1441719M1	B44	210635M1	C75	274339M91	A64		
1033198M1	C362	1445437M1	SPB3000	210716M1	B57	281560M91	B90(2)		
1033199M1	C343	144719M1	B44	210774M1	C96	2826795M1	B81		
103319M1	C120	144720M1	B95	210775M1	C108	2835234M1	B56		
103320M1	C210	144721M1	B257	210810M1	B51	2835857M1	B128(3)		
1033376M1	C328	147365M1	C94	211097M1	B87	284632M91	A66(2)		
1033451M1	C172	147366M1	C93	211098M2	C121	284633M91	A64(2)		
1033553M1	C320	1483880M1	C53	211666M1	C93	285632M91	A64		
1033731M1	B162	1483881M1	C91	211740M2	B32	291022T	B88		
1033785M1	B195	1506425M1	C151	212135M1	C117	3021192M1	MXV4-960		
1033813M1	C270	1506444M1	C188	212235M1	C117	3021352M91	A41(2)		
1034187M1	C164	1507294M1	B79	212397M1	C100	3021353M91	A37		
1034188M1	C180	1507296M1	B74	212520M1	C154	3021546M1	3V355		
1034707M1	A53	1507297M1	B71	213008M1	C128	3055094M1	B118(2)		
1035252M1	C184	1507299M1	B85	213469M1	C153	3179419M1	3VX425		
1035285M1	C313	1507300M1	B91	213850M1	B90	3180838M1	B105(2)		
1035406M1	C230	1507301M1	B97	214732M1	A32	3180869M1	A96		
1035667M1	B60	1507772M1	C194	216286M1	C112	320595M2	C54		
1035690M1	A60	1508593M1	B81	216897M1	A08	320596M1	B65		
1036940M1	C348	1508602M1	B78	220773M1	B94	320623M2	B93		
1037237M91		1508609M1	B75	221697M2[SET]	A71	321034M3	B120		
	2R3VX800P(6)	151134M3	C103	221697M2[SET]	B87	322768M1	C52		
1037667M1	B60	151335M1	A59	222120M1	C75	324872M1	B52		
1039570M1	B60	151812M1	B36	222278M1	C66	326586M3	B245		
1041487M1	B120	152259M1	C100	222279M1	B112	33145A	B42		
1041598M1	B252	1604055M1	C61	222280M1	A65	33365A	B40		
1041614M1	A71	1604401M1	B147	222295M1	B90(2)	334190M1	C85		
1041621M1	B180	1604524M1	SPA1264	222347M1	B80	334332M1	B100		
1041658M1	B119	1615254M1	C163	222348M1	B62	3396253M1	3VX500		
1041659M1	B144	1615333M1	C150	222666M1	C109	342388M1	A112		
1042395M1	B83	1616447M1	B47	222882M2	B60	343760M1	C195		
1042396M1	B32	1616477M1	B49	222917M1	A38	344306M1	A53		
1042873M1	B61	1680230W1	B230	223006M1	B102	344307M1	A75		
1043047M1	A92	1720488M1	C116	223336M2	A43	35124A	B43		
1043214M1	A175	1720674M1,M2	B54	223346M1	B118	401753M2	B193		
1043915M1	B215	1721710M1	SPA2900	223590M1	B149	402177M1	B55		
1043916M1	C134	1722835M1	C80	223591M1	A156	402188M1	B43		
1044000M91	B119	1724154M1	C105	223710M1	C129	402354M1	C74		
1044001M1	A46	1764410W1	A76	223991M1	A147	402603M1	B130		
1044181M1	B108	182715B1	B43	227455M1	C126	402604M1	B49		
1045252M1	C47	185223M1	A51	227457M1	C73	402605M1	B78		
1047702M1	B122	1855008M1	C74	227976M1	B51	402606M1	C103		
1049602M1	C103	190083M1	A49	227984M1	C143	402606M1	C103		
1049602M1	C103	195432M1	C104	227986M2	B178	402607M1	C96		
1050700M1	C94	195433M1	C97	228113M1	C57	403041M1	B46		
1051235M1	C352	195434M1	C112	228147M91	C117	403071M1	B79		

AG EQUIPMENT & PUMP BELTING PART NUMBERS

NOTE: FHP Belt may be upgraded to the MXV Belt, however the FHP Belt SHOULD NOT be substituted for the MXV Belt
Alphabetical sequence by manufacturer

OEM #	Belt No.	OEM #	Belt No.	OEM #	Belt No.	OEM #	Belt No.	OEM #	Belt No.		
MASSEY FERGUSON				MASSEY FERGUSON				MASSEY FERGUSON			
405928M1	B248	611588M1	B96	833127M1	B136	843845M1	B78	MELOS MFG.			
410195M1	SPZ2287	612258M1	B126	833128M1	C79	843947M1	C251	MB1..... B97			
410919M1	C111	612563M1	B88	833130M1	A172	844053M1	A66	MELROE			
410957M1	C67	619317M2	C68	833131M1	A178	844306M1	A53	6500720..... 5VX600			
410958M1	C62	621258M1	B126	833218M1	C62	844307M1	A76	6509084..... B105			
410959M1	C92	621259M1	C60	833563M1	B175	844478M1	B82	6515062..... A29			
411020M1	B38	621261M1	B85	833564M1	B183	844496M1	C221	6515624..... A24			
411125M1	SPZ1687	621262M1	B48	833652M2	B61	844503M1	BB93	6541107..... B83			
412074M1	B58	621588M1	C113	833655M1	A67(2)	844530M1	A64(2)	6541108..... B120			
412236M1	C112	665630M1	C105	833656M1	A43	844531M1	A66(2)	6541110..... B120			
412399M1	C66	668019M1	C50(2)	833665M2	B97	850320M1	B35	6541111..... B133			
417468M1	B53	669452M91	B42(2)	833673M1	B50	850349M1	C60	6541112..... B136			
417660M1	B126	675576M1	B93	833674M1	C79	852175M1	B36	6541113..... B144			
417795M1	B85	676135M1	C111	833734M1	C97	893575M1	SPA1257	6541114..... B85			
417797M1	B48	676161M1	BB94	833742M1	B98	905481M1	B167	6542201..... B81			
417974M1	C107	676448M1	B77	833854M2	B115	923190M1	3V355(4)	6542202..... B90			
418209M1	C64	677653M1	B131	833855M1	B214	923639M1	B85	6542203..... B112			
418900M1	B49	677654M1	B124	833860M1	C210	923640M1	5VX1400	6542204..... B124			
422790DA	A51	677656M1	B69	833861M1	B89(2)	924327M1	B60	6542205..... B128			
422792DA	A92	677664M1	B86	833867M1	A56	924329M1	C195	6542206..... B185			
460533M1	B48	687838M1	B88	833869M1	A53	924623M1	B64	6542208..... B158			
501060M1	B62	687841M1	B90	833870M1	A51	924769M2	5VX360	6542209..... B173			
511275M1	MXV4-1020	687995M1	B45	833872M1	C161	925726M1	3L220	6542210..... B180			
511277M3	MXV4-500	687996M1	C89	833962M1	C115	926755M1	B136	6542211..... B203			
513316M1	A90	699454M91	B39	834032M1	B43(2)	927739M1	5VX1250(2)	6542492..... B31			
513790M1	3V900	700634M1	A66	834057M1	C87	933139M1	3VX500(2)	6542493..... B26			
514132M1	MXV4-300	701111M1	B110	834058M1	C86	933245M1	B151(2)	6542494..... B58			
514806M1	MXV4-350	703298M1	B110	834111M1	B103	933505M1	B86(2)	6542495..... B73			
514808M1	A33	703321M1	B73	834139M1	C71	933550M1	3VX315(2)	6542496..... B92			
514891M1	MXV4-820	763775M1	A45	834140M1	C142	947580M1	B70	6542540..... B98			
515382M1	1430V450	764926M1	A32	834148M1	A38	948457M1	5V2000(5)	6542541..... B106			
515383M1	1422V600	767141M1	A50	834170M1	B136	995514M4	B77	6542542..... B126			
517965M1	A82	767356M1	A47	834190M1	C85	GB5123	A134	6542543..... B131			
518125M2	A38	782849M2	C55	834191M1	C102	GB5254	A127	6542544..... B140			
518223M2	A26	782850M2	C52	834254M1	B152	GB5294	BB195	PICKUP1..... A26			
519958M1	MXV4-770	783907M1	B61	834255M1	B156	GB5314	B112	PICKUP2..... A32			
521404M1	SPZ1480	784170M2	B224	834264M1	A48	GH5027	B160				
523733M1	MXV4-360	784796M1	C143	834265M1	B53	GH5038	B91				
523734M1	MXV4-580	784797M1	B51	834332M1	MXV5-1000	GH5045	B68				
523735M1	A95	784926M1	A32	834348M1	B42	GH5046	B158				
525932M1	A54	785676M2	B191	834492M2	B49	GH5047	B53				
530669M1	MXV4-350	785810M1	B152	834518M2	C94	GH5067	B34				
530756M1	A96	790839M1	C170	834729M1	A40	GH5139	B29				
531316M1	A90	795514M1	B77	834811M1	C98	GK5019	BB210				
537280DA	A43(2)	830701M91	C52	842110M1	B192	GK5045	B124				
537356M1	A27	830702M91	C50(2)	842413M1	MXV5-590	GK5094	D75				
538241M2	A37	832085M1	C92	842417M1	SPA1457	GK5098	C107				
540027M1	B40	832446M1	B132	842419M1	B156(2)	GK5105	B94				
541190M1	B148	832490M1	5VX530	842463M1	B48	GK5249	C121				
541390M1	B75	832526M1	A159	842464M2	C62	GK5262	C120				
542304M1	B76	832538M1	B80	842538M1	B79	GK5274	C150				
542456M1	B166	832597M91	A60	842796M1	SPZ1437	GL5152	B32				
542551M1	B88	832599M1	A40	842809M1	C132	GN5101	B77				
542739M1	B168	832806M1	C61	842845M1	B78	GT5047	A114				
545651M1	C210	832807M1	C98	842851M1	B89(2)	TX2186	B100				
545654M1	C85	832822M1	B105	842935M1	C51	TX6359	C209				
550596M1	C97	832832M1	C122	842991M1	B97						
556779M91	B44(2)	832855M1	A154	842992M1	C249						
581459M91	B45	832866M2	C214	843008M1	A64						
581460M1	B43	832867M1	B133	843009M1	A65(2)						
583576M1	BB136	832869M1	C86	843029M1	C90						
583601M91	B116	832870M1	C118	843302M1	C232						
583641M1	C93	832871M1	C72	843310M1	B238						
583824M1	BB120	832872M1	C128	843313M1	510J20						
584849M1	C91	832876M1	B48	843324M1	B97						
584850M1	B54	832877M1	B57	843376M1	C194						
610097M1	C48	832878M1	C80	843737M1	B51						
610470M1	C103	832895M2	A35	843742M1	B167						
610506M1	C96	832896M1	A60	843747M1	C216						
610813M1	B89	832906M1	C158	843749M1	C49						
610841M1	C109	832910M1	C49	843758M1	C244						
610842M1	A142	832922M2	A37	843759M1	C207						
610846M1	C42	833011M1	C138	843760M1	C195						
611353M1	C131	833061M2	C118	843811M1	C99						
				MAYRATH							
				621022..... B236							
				627009..... B292							
				A229..... B58							
				A300..... B297							
				B77..... B77							
				McCONNELL MFG.							
				GM81A..... B38							
				UT055178..... B105							
				McKEE							
				GB651..... B65							
				MI - T - M							
				400..... A40							
				406..... AX46							
				MITSUBISHI							
				4136718080..... 17385							
				MONO MFG.							
				B120..... B120(6)							
				MOODY MFG.							
				B46..... B46							
				BB124..... BB124							
				MOOERS MACHINERY							
				1048..... B48(4)							
				1085..... B85							
				1090..... B90(8)							
				MORIDGE MFG.							
				381620..... 3V950							
				381655..... 3V1400(3)							
				38244410..... C105							

AG EQUIPMENT & PUMP BELT PART NUMBERS

NOTE: FHP Belt may be upgraded to the MXV Belt, however the FHP Belt SHOULD NOT be substituted for the MXV Belt
Alphabetical sequence by manufacturer

OEM #	Belt No.	OEM #	Belt No.	OEM #	Belt No.	OEM #	Belt No.	OEM #	Belt No.
MOTT MFG.		NEW IDEA		OPPEL HARVESTER		OWATONNA MFG. (SEE GEHL)		PENNINGTON	
186.....	MXV5-470	715398.....	C97(2)	I1040.....	C144	2014617.....	B173	60.....	B50
252.....	A31	716183.....	C154(3)	I1071.....	B144	2014618.....	B59	714.....	B96
276.....	3VX710	716288.....	C73	I1101.....	B180	2015779.....	B120	156A.....	B140
501.....	B144	716640.....	C111	I1185.....	C190	2016068.....	B55	POLARIS	
526.....	B120	717893.....	C131	I1586.....	C173	2016085.....	C55	176663.....	5VX1000
527.....	B120	719244.....	B210	I1613.....	B83	2017641.....	C69	P1005V.....	5VX1000
528.....	B66	719662.....	C108	I1614.....	B90	2017862.....	3VX600(2)	P1805V.....	5V1800
533.....	B46	719715.....	C149	I1686.....	C180	2019505.....	C162	PB161.....	B158
535.....	B48	719716.....	C160(3)	I1783.....	B173	2020054.....	3VX900/6	PB167.....	B166(2)
557.....	B180	719722.....	C130	I1784.....	C75	2020665.....	B109	PB176.....	B173
102631.....	C50	720204.....	B148	I1791.....	C158	2021443.....	3VX375	PC1025.....	C99
NEW IDEA		720217.....	B86	I189.....	B112	2021649.....	C128	PC111.....	C106
12271.....	C97	721409.....	C146	I190.....	B105	2021731.....	3VX600(2)	PC116.....	C112
104486.....	B74	722378.....	C150	I1911.....	B158	2025467.....	C111	PC1315.....	C128
104617.....	B77	722557.....	C115(2)	I1911.....	B158	2027595.....	C96	PC1395.....	C136
10477.....	B75	722622.....	C184	I195.....	B71	2027596.....	C115	PC1449.....	C140
120174.....	A42(2)	722649.....	C177	I196.....	B65	2027921.....	3VX600	PC1475.....	C144
175403.....	B75	740171.....	D90	I1969.....	C105	2028263.....	B105	PC155.....	C150
250278.....	C73	740322.....	C151	I198.....	B100	2029656.....	A41	PC165.....	C162
300943.....	B83	740323.....	C186	I2137.....	C60	2029657.....	A45	PC181.....	C177
302732.....	B47	740640.....	B120	I2138.....	B133	2029726.....	A52	PC184.....	C180
302733.....	B49	741042.....	C149	I2238.....	C85	2031847.....	3V600/4	PC188.....	C185
303107.....	B56	741043.....	C152	I32298.....	B68	2032167.....	3VX315	PC1885.....	C185
303337.....	B96	741044.....	C116	I3318.....	B120	2032171.....	A54	PC192.....	C189
303520.....	C103	742033.....	C101(4)	I3509.....	C210	2032172.....	C136	PC1985.....	C195
303834.....	B99	742036.....	C70(3)	I3535.....	B85	2032173.....	C144	PC2125.....	C210
305821.....	B40	742037.....	C115(3)	I397.....	C112	2032177.....	B35	PC228.....	C225
308301.....	B114	742527.....	C98(4)	I398.....	B60	2032178.....	B53	PC245.....	C240
308302.....	C122	742562.....	B53	I4389.....	B80	2032182.....	C139	PC2735.....	C270
308303.....	C113	743794.....	C73	I483.....	C120	2032183.....	A40	PC94.....	C90
308636.....	B64	743795.....	C81(4)	I866.....	C128	2032187.....	3V560/6	POWELL MFG.	
308637.....	B57	743796.....	C129	T187.....	B68	2032193.....	B300	38563.....	A85
400024.....	C140	743797.....	C132	OWATONNA MFG. (SEE GEHL)		2032187.....	3V560/6	PUG MFG.	
400194.....	CC136	743798.....	C82	2010240.....	C59	2032201.....	A40	3211AA0843..	1922V443
400875.....	CC136	743799.....	C82	2010242.....	A38	2032202.....	B120	3211AA08430	1922V408
526369.....	B87	743800.....	C104	2010243.....	B126	2032208.....	C105	RAMACHER	
526370.....	B87	743940.....	C152(3)	2010244.....	B140	2032211.....	A35	82842.....	B42
551155.....	C84(4)	744282.....	C95(3)	2010245.....	B210	2032215.....	C90	83048.....	B48
551250.....	C66	744831.....	B231	2010248.....	B195	3010520.....	C88	83268.....	B68
571895.....	A91	747254.....	C78	2010498.....	B150	3013413.....	C57	83680.....	B80
575377.....	B53	747255.....	C144(2)	2010499.....	B225	3013414.....	C63	84071.....	B71
575767.....	A26(3)	747256.....	C72(4)	2010500.....	B103	3013609.....	C132	84283.....	B83
601301.....	B53(2)	760536.....	C105	2010501.....	B79	P K MFG.		84487.....	B87
635614.....	B60	760608.....	C98	2010502.....	B85	CB64A.....	A64	84893.....	B93
675402.....	B37	760615.....	C100	2010503.....	B93	GCSPPD35A.....	A35	850112.....	B112
675804.....	B33	761757.....	C98	2010504.....	B74	GCSPTM43A.....	A43	85112.....	B112
676262.....	B78	765025.....	C104(4)	2010505.....	B71	PARMA		85112.....	B112
703225.....	A45	765025.....	C190	2010506.....	B63	1487.....	C83	85112.....	B112
703344.....	A56	2675401.....	B71	2010507.....	B67	108303.....	B81	85112.....	B112
703345.....	A58	15A14072.....	C46	2010508.....	B68	145402.....	C50(2)	85112.....	B112
703346.....	A68	720080A.....	C185	2010509.....	B51	1013806.....	B136	85112.....	B112
703885.....	A38	AK1874.....	B51(2)	2010510.....	B51	1410001.....	C96	85112.....	B112
704322.....	C151	F221636.....	C81	2010511.....	B51	6000782.....	B82(2)	85112.....	B112
706239.....	17540	F240831.....	C136	2010512.....	B112	14W14804.....	CC144	85112.....	B112
708897.....	A77	F7502685.....	C54	2010513.....	C99	BEN PEARSON		85112.....	B112
710417.....	B45	H143874C2.....	C51	2010514.....	B51	CP10176.....	3VX600	85112.....	B112
710495.....	C51	H143876C1.....	C69	2010515.....	B112	CP10491.....	3VX400	85112.....	B112
710630.....	B192	H210628C1.....	B81	2010516.....	C99	CP6497.....	BB75	85112.....	B112
710693.....	C115	H210629C1.....	B69	2010517.....	B112	CP8165.....	3VX560	85112.....	B112
710712.....	C111	H545540R1.....	C72	2010518.....	B112	CP9151.....	3VX280	85112.....	B112
710713.....	B136(2)	H668902R1.....	B77	2010519.....	B135	VP1612.....	B49	85112.....	B112
710722.....	C108(2)	H668902R1.....	B77	2010520.....	C89(3)	PEERLESS		85112.....	B112
710976.....	B83	H668902R1.....	B77	2010521.....	C67	99708.....	B57	85112.....	B112
710982.....	C147	H668902R1.....	B77	2010522.....	C81	8BB1.....	BB81(2)	85112.....	B112
711541.....	C81	H668902R1.....	B77	2010523.....	A44	B42.....	B42(2)	85112.....	B112
711552.....	C86	H668902R1.....	B77	2010524.....	C57	B60.....	B60	85112.....	B112
711779.....	C90	H668902R1.....	B77	2010525.....	C89	B70.....	B70	85112.....	B112
711908.....	C147	H668902R1.....	B77	2010528.....	C70	BB70.....	BB71	85112.....	B112
711541.....	C81	H668902R1.....	B77	2011044.....	C89	RENN (SEE MACDON)		85112.....	B112
711552.....	C86	H668902R1.....	B77	2011400.....	C78	6B85.....	B85	RIVINIUS INC.	
711779.....	C90	H668902R1.....	B77	2012079.....	3V800	8371B7.....	BB60	RIVINIUS INC.	
711908.....	C147	H668902R1.....	B77	2012080.....	3V800	8372B7.....	B62	RIVINIUS INC.	
711541.....	C81	H668902R1.....	B77	2012085.....	B51	REN		RIVINIUS INC.	
711552.....	C86	H668902R1.....	B77	2012085.....	B53	(SEE MACDON)		RIVINIUS INC.	
711779.....	C90	H668902R1.....	B77	2012085.....	B53	(SEE MACDON)		RIVINIUS INC.	
711908.....	C147	H668902R1.....	B77	2012088.....	B142	(SEE MACDON)		RIVINIUS INC.	
711541.....	C81	H668902R1.....	B77	2013413.....	C57	(SEE MACDON)		RIVINIUS INC.	
711552.....	C86	H668902R1.....	B77	2013609.....	C131	(SEE MACDON)		RIVINIUS INC.	
711779.....	C90	H668902R1.....	B77			(SEE MACDON)		RIVINIUS INC.	
711908.....	C147	H668902R1.....	B77			(SEE MACDON)		RIVINIUS INC.	
711541.....	C81	H668902R1.....	B77			(SEE MACDON)		RIVINIUS INC.	
711552.....	C86	H668902R1.....	B77			(SEE MACDON)		RIVINIUS INC.	
711779.....	C90	H668902R1.....	B77			(SEE MACDON)		RIVINIUS INC.	
711908.....	C147	H668902R1.....	B77			(SEE MACDON)		RIVINIUS INC.	
711541.....	C81	H668902R1.....	B77			(SEE MACDON)		RIVINIUS INC.	
711552.....	C86	H668902R1.....	B77			(SEE MACDON)		RIVINIUS INC.	
711779.....	C90	H668902R1.....	B77			(SEE MACDON)		RIVINIUS INC.	
711908.....	C147	H668902R1.....	B77			(SEE MACDON)		RIVINIUS INC.	
711541.....	C81	H668902R1.....	B77			(SEE MACDON)		RIVINIUS INC.	
711552.....	C86	H668902R1.....	B77			(SEE MACDON)		RIVINIUS INC.	
711779.....	C90	H668902R1.....	B77			(SEE MACDON)		RIVINIUS INC.	
711908.....	C147	H668902R1.....	B77			(SEE MACDON)		RIVINIUS INC.	
711541.....	C81	H668902R1.....	B77			(SEE MACDON)		RIVINIUS INC.	
711552.....	C86	H668902R1.....	B77			(SEE MACDON)		RIVINIUS INC.	
711779.....	C90	H668902R1.....	B77			(SEE MACDON)		RIVINIUS INC.	
711908.....	C147	H668902R1.....	B77			(SEE MACDON)		RIVINIUS INC.	
711541.....	C81	H668902R1.....	B77			(SEE MACDON)		RIVINIUS INC.	
711552.....	C86	H668902R1.....	B77			(SEE MACDON)		RIVINIUS INC.	
711779.....	C90	H668902R1.....	B77			(SEE MACDON)		RIVINIUS INC.	
711908.....	C147	H668902R1.....	B77			(SEE MACDON)		RIVINIUS INC.	
711541.....	C81	H668902R1.....	B77			(SEE MACDON)		RIVINIUS INC.	
711552.....	C86	H668902R1.....	B77			(SEE MACDON)		RIVINIUS INC.	
711779.....	C90	H668902R1.....	B77			(SEE MACDON)		RIVINIUS INC.	
711908.....	C147	H668902R1.....	B77			(SEE MACDON)		RIVINIUS INC.	
711541.....	C81	H668902R1.....	B77			(SEE MACDON)		RIVINIUS INC.	
711552.....	C86	H668902R1.....	B77			(SEE MACDON)		RIVINIUS INC.	
711779.....	C90	H668902R1.....	B77			(SEE MACDON)		RIVINIUS INC.	
711908.....	C147	H668902R1.....	B77			(SEE MACDON)		RIVINIUS INC.	
711541.....	C81	H668902R1.....	B77			(SEE MACDON)		RIVINIUS INC.	
711552.....	C86	H668902R1.....	B77			(SEE MACDON)		RIVINIUS INC.	
711779.....	C90	H668902R1.....	B77			(SEE MACDON)		RIVINIUS INC.	

AG EQUIPMENT & PUMP BELTING PART NUMBERS

NOTE: FHP Belt may be upgraded to the MXV Belt, however the FHP Belt SHOULD NOT be substituted for the MXV Belt
Alphabetical sequence by manufacturer

CROSS-REFERENCE - AG EQUIPMENT

OEM #	Belt No.	OEM #	Belt No.	OEM #	Belt No.	OEM #	Belt No.	OEM #	Belt No.
ROBIN NODWELL		SCOOP-A-SECOND		SPEED KING		TYLER		VERSATILE	
7098100035	A35	24 X 6	B158	B106	B106(2)	10384	B67(2)	1409	MXV5-520
7098100096	A96	30 X 6	B195	B112	B112	11051	B65	1471	B173
7098100105	AA105	35 X 6	B230	B128	B128	11129	B63	1540	MXV5-400
7098100120	AA120	35 X 7	B230	B158	B158	11130	B83	1547	B46
7098110120	AA120	40 X 6	B270	B75	B75	19466	AA51	2726	B53
7098200116	B116	40 X 7	B270	B90	B90(2)	34183	B85	2856	B85
7098200120	B120	50 X 7	B270	B93	B93	35056	B93	3166	B100
		60 X 6	B144	B97	B97(2)	B38	B38	3227	B55
		60 X 7	B230	O3501405	B79	B60	B60	3334	BB105
				O3502205	B90	B80	B80	3335	BB55
RODGERS MFG.		SHAW							
5590	A51	B57	B57	O3504805	B97			3429	B103
L777A	B75	B65	B65	O3505505	B100			5266	B52
LR1284	BB68(2)	S1666	A54	O3519605	B38			5963	B51(2)
		S1718	AA85	O3540205	B68			5964	B80(2)
		S3472	A65	O3562605	B108			7163	B90
ROOT MFG.								7831	C81
A48	A48							7832	B66(2)
								7956	B65
								7957	C81
								8279	A47(3)
ROSKAMP MFG.		SHELLMAN		SPEEDY MFG.		UNITED FARM TOOL			
112	B93(5)	127	C149(2)	B1516	C71	371	C149	8712	C120
		12701009	A100	R182	C74(3)	372	C51	10205	C116
		B74	B74	R184	C76(3)	691	C60	10612	B88
		C60	C60			3880	BX112	10705	B147
		HA100	A110			4056	B49	12422	B83
						11939	A62	13523	B315
ROTECH		SHINN		STARLINE					
20322800	C162	7196	A96	16340	B81				
87855730	B128			STEIGER TRACTOR		UTAH AGRICORP			
252928960	B57			16908		4HB940		B92	
702A53190	B48								
ROWSE HYDRAULICS RAKES		SIEMENS MFG.		SUND MFG.					
25581499	C99	121378	A32	XB112	B112				
R1558141	C101			XB116	B116				
R1558149	C101			XB124	B124				
				XB133	B133				
				XB180	B180				
S E SPRAY EQUIPMENT		SIoux TOOL		SUPERIOR EQUIPMENT		VAN DALE			
HB150	B150	B51	B51(2)	B46	B46	90348	B95	28617	B105
HB158	B158			B58	B58	675804	B33(2)	28619	B158
								33375	B44
								35741	B53
								35742	C83
								47613	B41
								51778	A46
								52631	B47
								55266	A32
								59238	C131(2)
								61484	C105
								62415	C63
								63215	B142
								64216	C146
								64223	C112(2)
								64412	B96
								64426	C106
								64551	C131
								64556	C69
								64571	B109
								64845	A68
								74557	B105
								77115	C253(2)
								86518910	BB51
								306703V1	C96
								306704V1	C115
								360701V1	C69
								360702V1	C77
								360708V1	B70
								360709V1	B68
								360710V1	C96
								360713V1	B83
								360714V1	B117
								360715V1	B199
								360717V1	B46
SCHULER		SNOW CORP.		THIokol		VERSATILE			
134000	B133	221954	B133	9000325	C68	777	B71		
134300	C136	221974	B75	90000326	C68	824	B75(2)		
134500	C173	A112	A112			956	B42		
411000	C105	A136	A136	THOMPSON		957	B35		
411096	C96	B144	B144	B105	B105	1376	B51		
411099	C99	B210	B210	B60	B60	1390	B71		
511459	C75	B51	B51	TOTE CO.		1406	B48		
580305	C156	B60	B60	290319	B93	1407	BB68(3)		
GR134	B133	B85	B85	294917	B85				
S134	B132	YJT1025	B83	TRIPLE C					
S134C	C136			B30	B30				
				B35	B35				
				B46	B46				
				B51	B51				

AG EQUIPMENT & PUMP BELT PART NUMBERS

NOTE: FHP Belt may be upgraded to the MXV Belt, however the FHP Belt SHOULD NOT be substituted for the MXV Belt

Alphabetical sequence by manufacturer

Table with 10 columns: OEM #, Belt No., OEM #, Belt No., OEM #, Belt No., OEM #, Belt No., OEM #, Belt No. Sections include VERMEER, WESTERN LAND ROLLER, WESTFIELD, WESTMORE PULVERIZER, VICON (GEHL), VIKING, VOLVO/PENTA, WALSH, and WESTERN LAND ROLLER.

AG EQUIPMENT & PUMP BELTING PART NUMBERS

NOTE: FHP Belt may be upgraded to the MXV Belt, however the FHP Belt SHOULD NOT be substituted for the MXV Belt
Alphabetical sequence by manufacturer

OEM #	Belt No.	OEM #	Belt No.	OEM #	Belt No.	OEM #	Belt No.	OEM #	Belt No.		
WHITE FARM EQUIPMENT				WHITE FARM EQUIPMENT				WHITE FARM EQUIPMENT			
981-1200.....	C126	CO8660A.....	B95	S1229.....	B133	WILLMAR					
981-1250.....	C120	CO8743.....	C70	S1230.....	B48	B70.....	B70	WOODS DIVISION/HESSTON			
981-1260.....	C73	CO8744.....	C51	S1260.....	B87	W-4M1052.....	BB112	32970A.....	B204		
981-1270.....	C141	CO8904.....	C106	S1309B.....	B128	WIL-RICH					
981-1290.....	C162	CO8905.....	B51	S257.....	B38	17630.....	A81(2)	B48.....	B48		
981-1350.....	B111	CO8916.....	B218	S627.....	C60	18588.....	A75(2)	RM230.....	C225		
981-1440.....	C120	CO8985.....	B199	S806.....	B185	19263.....	A93(2)	RM49.....	B148		
981-1450.....	C104	CO9036.....	B38	S807.....	B53	70225.....	B56(4)	W137.....	B162		
981-1470.....	C202	C9060A.....	B46	S944.....	B71	A7630.....	A81(2)	W180.....	B210		
981-1480.....	B111	CO9146A.....	D128	SO579B.....	B55	WOODS & COPELAND					
981-1490.....	B64	CO9147.....	C72	SO800B.....	B77	62090.....	B61	WRIGHT STANDER			
981-1520.....	C138	CO9296.....	B81	SO819B.....	B79	62165.....	B71	71460001.....	AX50		
981-1570.....	B62	CO9561.....	CC158	SXO61.....	BB210	WOODS DIVISION/HESSTON					
981-1670.....	C51(2)	CO9887.....	C81	SXO68.....	B122	1469.....	B133	71460002.....	BX52		
981-1710.....	B150	CO9917.....	B48	SXO69.....	BB97	1532.....	C136	71460003.....	BX77		
981-1730.....	C134	CXS42.....	B93	SXR3000.....	B85	2400.....	B128	71460010.....	BX50		
981-1740.....	B112	CXS72(A).....	B106	SXS71.....	B109	2400.....	MXV5-1310	71460011.....	BX71		
981-1760.....	C140	EXS18.....	B108	TXO35.....	B82	3492.....	B204	71460012.....	BX58		
981-1770.....	C162	EXS19.....	B114	TXO40.....	BB120	4927.....	B133	71460013.....	BX85		
981-1790.....	B218	EXS28.....	B100	TXS54.....	C62	4927.....	MXV5-1360	71460023.....	AX48		
981-1800.....	B152	EXS29.....	B105	UXO6.....	B158	5711.....	B240	71460024.....	AX51		
981-1920.....	C138	EXS41.....	B210	UXR3034.....	B98	6857.....	C152	WYATT			
9935.....	C149	FH1213.....	B199	UXR3053.....	B75	10676.....	B158	10419C.....	B38		
A861.....	C66	FHY291.....	D140(2)	UXR3054.....	B58	10859.....	B248	10429C.....	B60		
AC10518.....	C140(3)	HXR3004.....	B162	UXS13.....	B116	10864.....	B173	10449C.....	B124		
AC7656.....	B225	HXR3005.....	B180	VX551.....	B38	11466.....	B255	B48.....	B48(2)		
AC7744.....	B100	HXR3012.....	B161	VXR3083.....	B68	15415.....	B144	YANMAR			
AC7866.....	B162	HXR3014.....	BB155	VXS649.....	C180	18186.....	B195	YEAR - AROUND CAB			
AC8743.....	C72	HXS109.....	C88	WXS321.....	B42	18440.....	B221	61008376.....	C112		
AC8924.....	C54(3)	HXS81.....	C93	WXS328.....	B98	23894.....	B180	61008377.....	C124		
AC9561.....	CC162	HXS82.....	C90	WXS375.....	B47	23943.....	B270				
AC9865.....	B68(4)	HXS90.....	C85	WXS8(A).....	B83	23944.....	B162				
AP2859.....	B87	J106V.....	C162	WXS95.....	B87	23946.....	B273				
AP3282.....	B79	J235V.....	C207	XAD1049.....	C144	24004.....	B132				
AP3420.....	B66	J383V.....	C195	XAD1073.....	B120	24102.....	C220				
BPS23.....	B136	J402V.....	C188	XAD1081.....	B83	26840.....	B124				
BXR3007.....	B53	JX04.....	B93	XAD1105.....	B147	27652.....	B139				
BXS11(A).....	B46	JX05.....	B87	XAD1191.....	B148	27875.....	B205				
BXS20.....	B53	JX06.....	B166	XAD1199.....	BB68	28167.....	B240				
BXS21.....	B51	JXR3000.....	B240	XAD1256.....	C75	28975.....	B103				
BXS23.....	B136	JX57.....	B151	XAD1257.....	CC112	29229.....	B130				
BXS26.....	B153	JX58.....	B142	XAD1298.....	BB180(2)	31615.....	MXV5-1180				
BXS29.....	C162	JX59.....	B154	XAD1298.....	BB180(2)	31666.....	C218				
CO10044.....	C89	K137121.....	B218	XAD1314.....	C51	31748.....	B126				
CO10045.....	B47	K146611.....	B120	XAD1316.....	B133	32650.....	B205				
CO10053.....	B108	K231.....	C55	XAD1317.....	B158	32906.....	B198				
CO10116.....	C79	K265.....	C48	XAD235.....	B38	33050.....	B255				
CO10473.....	B210	LT6063.....	C54	XAD239.....	C144	33652.....	B150				
CO10518.....	C139(2)	M1324.....	A51	XAD248.....	C75	33710.....	B173				
CO10682.....	C63	M2684BV.....	A96	XAD336.....	B169	35543.....	B225				
CO11085.....	B173	MBX9504.....	A78	XAD351.....	B83	41826.....	CC128				
CO11101.....	C66	MEX9504.....	A78	XAD381.....	B86(2)	65217.....	B85				
CO11153.....	B131	MO2305.....	C73	XAD386.....	C195	65217.....	MXV5-880				
CO11322.....	B105	MXO114.....	B62	XAD747.....	CC112	65218.....	B70				
CO11386.....	C60	MXO115.....	B65	XAD748.....	C51	65218.....	MXV5-730				
CO11397A.....	A37	MXR3004.....	B162	XAD749.....	C158	65611.....	B124				
CO11530.....	B97	MXR3005.....	C144	XAD750.....	B120	70341.....	AX34(2)				
CO11671.....	B117	MXS1495.....	B32	XAD751.....	B144	72346.....	C130				
CO11768.....	B158	MXS1668.....	B47	XAD753.....	B195	72821.....	MXV5-430				
CO3879.....	B85	MXS1789.....	B109	XAD754.....	B218	161711.....	B193				
CO4305A.....	B38	MXS216.....	B133	XAD771.....	B87	381914.....	MXV4-360				
CO4943.....	B114	MXS228.....	B32	XAD772.....	B173	10419C.....	B38				
CO7272.....	C89	PA2298.....	C51	XAD919.....	A46	10429C.....	B60				
CO7656.....	B225	PB147.....	B142	XAD920.....	B78	10449C.....	B124				
CO7676.....	B116	PK1191BV.....	A55	XAD921.....	B167	2474A.....	BB144				
CO7706.....	B35	PK1570BV.....	A48	XAF227.....	B117	26840A.....	B124				
CO7744.....	C99	PO3008.....	B47	Y7166.....	B87						
CO7744A.....	C101	PO3068.....	B48	Y7189.....	B75						
CO7791.....	B114	PO3230.....	C69	Y7200.....	B71(3)						
CO7866.....	B161	PO3282.....	B79	Y7219.....	B75						
CO8017A.....	B120	R1003.....	C69	Y7247.....	B71						
CO8095.....	B125	RH2288.....	B79	Z459.....	C51						
CO8504.....	C62	S1228.....	B64	Z671.....	3V530						
CO8545.....	B133					Z861.....	C66				

DRIVE BELT NOMENCLATURE



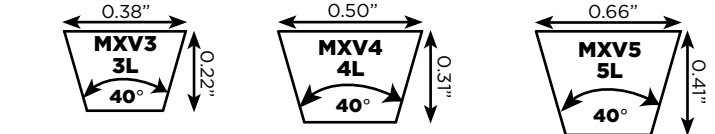
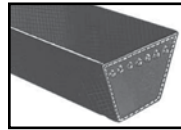
V-Belt Type	Numbered By	Part Number	Outside Length
Fractional HP	Effective Length	4L500	50"
Classical Multi-Plus	Standard Length Designation	A48	50"
Fractional HP	Effective Length	5L500	50"
Classical Multi-Plus	Standard Length Designation	B47	50"
Classical Cogged	Standard Length Designation	AX48	50"
Narrow Deep Wedge	Effective Length	5VX500	50"

LENGTH

NOTE: Length information values in the above table are approximate. Industry standards require that to properly measure a belt, it must be installed on a fixture with two pulleys of prescribed dimension and tensioned to a specific value. Accurate values cannot be measured by hand on a free length of belt.

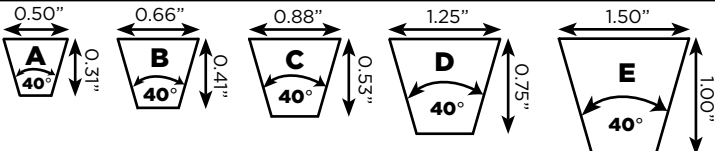
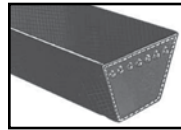
LIGHT DUTY FHP MXV™ - ARAMID CORD FOR LAWN & GARDEN

Fractional HP



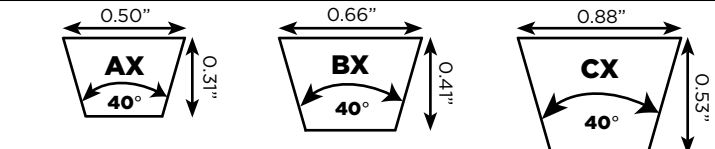
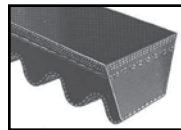
CLASSICAL HEAVY DUTY

Jason Multi-Plus® - UniMatch®



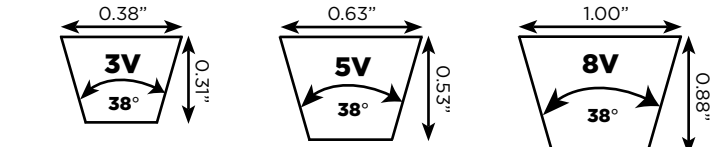
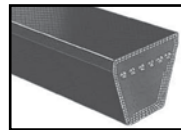
MOLDED COGGED

Cogged allows smaller pulleys. Better heat dissipation.



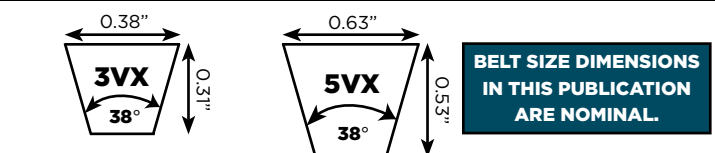
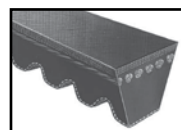
WEDGE

Narrower, deeper profile with higher power capability than classical v-belt. Allows for smaller, more compact drives.



WEDGE COGGED

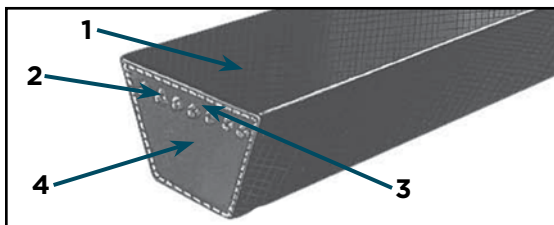
Same properties of Wedge. Cogged for greater flexibility and heat dissipation. Raw Edge Sidewalls (no fabric cover) prevent slippage.



**BELT SIZE DIMENSIONS
IN THIS PUBLICATION
ARE NOMINAL.**

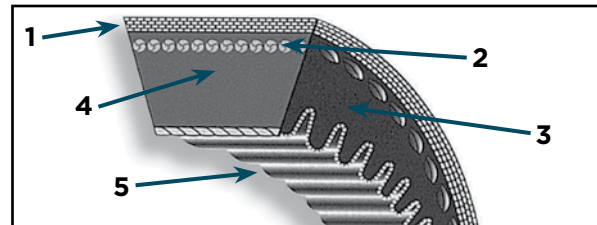
WIDTH/HEIGHT

WRAPPED V-BELT



- 1. Cover - Rubberized Fabric**
 - Flexible, non-cracking, smooth running for long life
 - Oil, heat & abrasion resistant
- 2. Load Section - Polyester Cords**
 - Positioned to take tension in both FHP & Classical applications
 - Chemically treated, then fused prevents separation
- 3. Load Carrying Section**
 - Special compound to resist stretch & fatigue
- 4. Compression Section**
 - Elastomer resists compression fatigue
 - Dissipates internal heat build-up
 - Provides firm lateral pressure against groove sidewall and distributes the load to cords

RAW EDGE V-BELT



- 1. Top Fabric**
 - Provides heat and oil resistance
- 2. Load Section - Polyester Cords**
 - Provides uniform distribution of load
- 3. Raw Edge Sidewalls**
 - Increases grip
 - Improved efficiency through reduced slippage
- 4. Compression Section**
 - Elastomer resists compression fatigue
 - Dissipates internal heat build-up
 - Provides firm lateral pressure against groove sidewall and distributes the load to cords
- 5. Precision Molded Cogs**
 - Provide flexibility and aid in heat dissipation

CONSTRUCTION



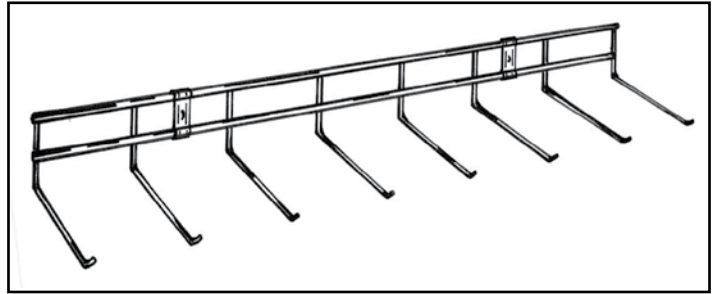
V-BELT ACCESSORIES



V-Belt Display

Display up to 160 belts at once. 49 hooks hold up to four belts each. Display height is 30" (17-1/4" without sign), width 47", 26-1/4" diameter. Includes header sign and bracket accessories for easy set-up.

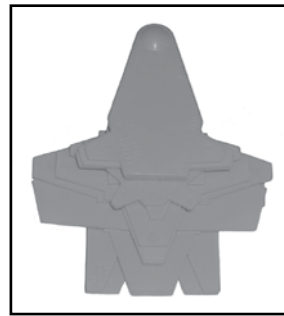
PART NUMBER: WFD-42



V-Belt Wall Rack

36" long mounting rack with eight 8" hooks provided. Includes two brackets for quick, easy, durable mounting.

PART NUMBER: WHD-7



Sheave Gauge

Can be used to determine both Sheave and Belt size. Check for sheave wear to determine when a replacement is necessary.

PART NUMBER: G001



110" Belt Measurer

Measures all size industrial belts up to 110" in ranges of 3/8", 1/2" and 5/8" accurately and efficiently.

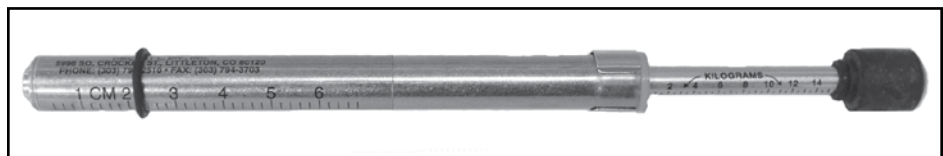
PART NUMBER: 32-9108



Tension Tester Gauge

Assures proper belt tension and installation.

PART NUMBER: TESTER



TERMS, CONDITIONS AND LIMITED WARRANTY OF SALE

All prices, terms and conditions of sale are subject to change without prior notice. Buyer agrees to all terms and conditions of seller upon the placement of any and all purchase orders.

GENERAL

- All orders are subject to a minimum charge of \$25.00.
- All claims must be made within seven (7) days of receipt of merchandise.
- The company reserves the right at all times to reject any and all orders for any reason.

PAYMENT TERMS

- Net 30 days (to approved and qualified accounts).
- We reserve the right to hold shipments against past due accounts.
- Seller may require full or partial payment in advance if, in its sole judgement, the financial condition of the buyer does not justify the terms specified.
- All past due accounts are subject to a late payment charge of 1.5% per month, or maximum allowed by law if different, along with the expenses incidental to collection including reasonable attorney's fees.
- Returned checks are subject to a minimum \$50.00 charge.

ACCEPTANCE, ALTERATION AND CANCELLATION OF ORDERS

Orders for other than standard items or standard lengths may not be cancelled after purchase has been committed, production scheduled or any costs incurred.

RETURN OF DEFECTIVE MERCHANDISE

Defective or failed material to be held at the buyer's premises until authorization has been granted by seller to return or dispose of merchandise. Merchandise to be returned for final inspection must be returned Freight Prepaid in the most economical way. Credit will be issued for material found to be defective upon our inspection based on prices at time of purchase.

MERCHANDISE SHIPPED IN ERROR

Buyer must notify seller immediately on any merchandise shipped in error. Upon notification, merchandise is to be returned to seller either via truck on a Freight Collect basis, via carrier of our choice, or via UPS on a Freight Prepaid basis. Buyer will be reimbursed for cost of merchandise, plus any additional freight which may have been incurred due to shipping error.

MERCHANDISE ORDERED IN ERROR

Standard packaged merchandise only may be returned, provided that the merchandise is in the original buyer's possession not more than 30 days. If merchandise is accepted for return, merchandise must be returned Freight Prepaid, and buyer will be charged a minimum of 15% rehandling charge, plus a chargeback for outbound freight charges if the original order was shipped prepaid. Returns are not accepted for any merchandise that is specifically manufactured to meet the buyer's requirement of either specifications or large quantity.

DELIVERY, DAMAGES, SHORTAGES

Delivery to the initial common carrier shall constitute the delivery to the buyer. Our responsibility, insofar as transportation risks are concerned, ceases upon the delivery of the merchandise in good condition to such a carrier, and all the merchandise shall be shipped at the buyer's risk.

GOODS DAMAGED IN SHIPMENT

Upon receipt of shipment, any evidence of damage to original shipping package must be reported by the receiving party and a claim made with the delivering carrier upon receipt of shipment.

CONCEALED DAMAGE

Any evidence of damage to material shipped, upon the opening of the original shipping package, must be reported by the receiving party to and a claim made with the delivering carrier without delay.

LIMITED WARRANTY

The merchandise or products sold or distributed by Jason Industrial Inc. are warranted to our customers to be free from defects in material and workmanship at the time of shipment by us. All warranty claims shall be made within 90 days after we have shipped the merchandise. Our liability hereunder is limited to the purchase price of any merchandise proved defective, or, at our option, to the replacement of such merchandise upon its authorized return to us.

THIS WARRANTY IS IN LIEU OF AND EXCLUDES ALL OTHER WARRANTIES, EXPRESSED, IMPLIED, STATUTORY, OR OTHERWISE CREATED UNDER APPLICABLE LAW INCLUDING, BUT NOT LIMITED TO, THE WARRANTY OF MERCHANTABILITY AND THE WARRANTY OF FITNESS FOR A PARTICULAR PURPOSE. IN NO EVENT SHALL WE BE LIABLE FOR SPECIAL, INCIDENTAL, OR CONSEQUENTIAL DAMAGES, INCLUDING LOSS OF PROFITS.



POWERING GLOBAL INDUSTRY

BELARUS**Minsk**

Phone +375 17 2802486
 Info.ee@megadynegroup.com

BRAZIL**Sorocaba**

Phone +55 15 2101 7700
 inquiries@jasonindustrial.com

CANADA**Edmonton**

Phone: +1 780 461 4400
 inquiries@jasonindustrial.com

Montreal

Phone: +1 514 31 2341
 inquiries@jasonindustrial.com

Toronto

Phone: +1 905 602 4400
 inquiries@jasonindustrial.com

CHINA**Beijing**

Phone +86 10 8150 7478
 info.cn@megadynegroup.com

Foshan

Phone +86 757 83815530
 info.cn@megadynegroup.com

Fujian

Phone +86 595 8816 0309
 info.cn@megadynegroup.com

Ningbo*

Phone +86 574 8650 2886
 info.cn@megadynegroup.com

Qingdao*

Phone +86 532 8765 2117
 info.cn@megadynegroup.com

Shanghai

Phone +86 21 5447 1473
 info.cn@megadynegroup.com

Shenyang

Phone +86 24 2572 3238
 info.cn@megadynegroup.com

COLOMBIA**Bogotá**

Phone: +57 1 471 0503
 inquiries@jasonindustrial.com

Cartagena

Phone: +57 5 669 3604
 inquiries@jasonindustrial.com

CZECH REPUBLIC**Praha**

Phone +420 2 8481 7181
 office.cz@megadynegroup.com

FRANCE**Paris**

Phone +33 1 6079 8200
 info.fr@megadynegroup.com

St. Jean De Maurienne

Phone +33 4 7964 0613
 info.fr@megadynegroup.com

GERMANY**Borchen**

Phone +49 5251 8735 0
 info.de@megadynegroup.com

Elchingen*

Phone +49 7308 9665 0
 produktion@megadynegroup.com

HUNGARY**Budapest**

Phone +36 23 428 628
 info.hu@megadynegroup.com

ITALY**Turin***

Phone +39 011 926 8052
 info@megadynegroup.com

Milan*

Phone +39 039 689 601
 info@samplabelting.com

MEXICO**Mexico C.P.**

Phone +52 55 5587 3680
 inquiries@jasonindustrial.com

POLAND**Bydgoszcz***

Phone +48 52 348 77 12
 info.pl@megadynegroup.com

SOUTH AFRICA**Johannesburg**

Phone +27 (0)12 661 1652
 info.sa@megadynegroup.com

Cape Town

Phone +27 (0)21 9820772
 sales.za@megadynegroup.com

SPAIN**Barcelona***

Phone +34 93 811 5450
 info.sp@megadynegroup.com

SWEDEN**Kristianstad**

Phone +46 10 1309600
 info.se@megadynegroup.com

THAILAND**Bangkok**

Phone: +66 (0) 27115477
 info.apac@megadynegroup.com

TURKEY**Izmir***

Phone +90 232 877 07 00
 info@rultrans.com.tr

U.K.**Birmingham**

Phone: +44 1384 215 021
 sales@megadynegroup.com

U.S.A.**California**

Phone +1 323 265 8061
 inquiries@jasonindustrial.com

Florida

Phone +1 813 241 4111
 inquiries@jasonindustrial.com

Georgia*

Phone +1 770 887-9725
 sales@beltcorp.com

Illinois

Phone +1 630 752 0600
 inquiries@jasonindustrial.com

New Jersey Americas HQ

Phone +1 973 227 4904
 inquiries@jasonindustrial.com

New York*

Phone +1 716 667-7450
 info@sampla.com

North Carolina*

Phone +1 704 583 5388
 inquiries@jasonindustrial.com

Oregon

Phone +1 888 231 7224
 inquiries@jasonindustrial.com

South Carolina*

Phone +1 864 288 9916
 inquiries@jasonindustrial.com

Texas

Phone +1 972 438 6992
 inquiries@jasonindustrial.com

HEADQUARTERS**ITALY Torino**

Via S. Lucia, 114
 10075 Mathi (Torino)
 Phone +39 011 926 8052
 info@megadynegroup.com

www.megadynegroup.com
 www.jasonindustrial.com
 www.beltcorp.com
 www.samplabelting.com

*Manufacturing Location

**Lawn & Garden Product
 Customer Service**

1 (800) 527-1247

FAX: 1 (630) 752-0680 • jasonindustrial.com

